

IL-22 Receptor Antibody

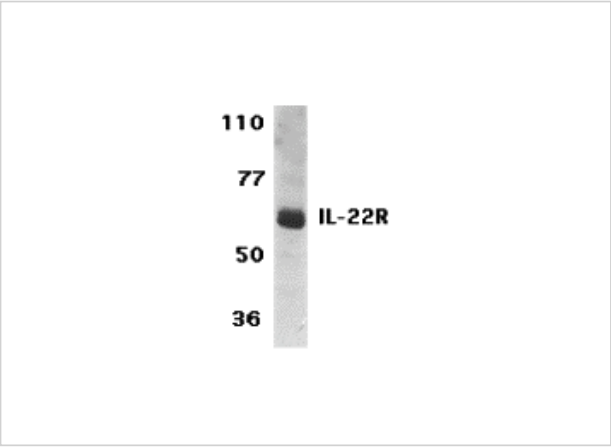
CATALOG NUMBER: 2489

Specifications

Host Species	Rabbit
Species Reactivity	Human, Rat
Homology	Predicted species reactivity based on immunogen sequence: Bovine: (100%), Mouse: (93%)
Immunogen	IL-22 antibody was raised against a 15 amino acid peptide near the carboxy terminus of human IL-22. The immunogen is located within the last 50 amino acids of IL-22 Receptor.
Conjugate	Unconjugated
Tested Applications	ELISA, WB
User Note	Optimal dilutions for each application to be determined by the researcher.
Predicted Molecular Weight	62 kDa

Properties

Purification	IL-22 Receptor Antibody is affinity chromatography purified via peptide column.
Clonality	Polyclonal
Isotype	IgG
Physical State	Liquid
Buffer	IL-22 Receptor Antibody is supplied in PBS containing 0.02% sodium azide.
Concentration	1 mg/ml
Storage Conditions	IL-22 Receptor antibody can be stored at 4°C for three months and -20°C, stable for up to one year. As with all antibodies care should be taken to avoid repeated freeze thaw cycles. Antibodies should not be exposed to prolonged high temperatures.



IL-22 Receptor Antibody 1

Western blot analysis of IL-22 Receptor expression in human HepG2 cell lysate with IL-22 Receptor antibody at 1 µg/ml.

Disclaimer

Disclaimer	Optimal dilutions/concentrations should be determined by the end user. The information provided is a guideline for product use. This product is for research use only.
------------	--

For research use only. For additional information, visit ProSci's [Terms and Conditions Page](#).