

## TCCR Antibody

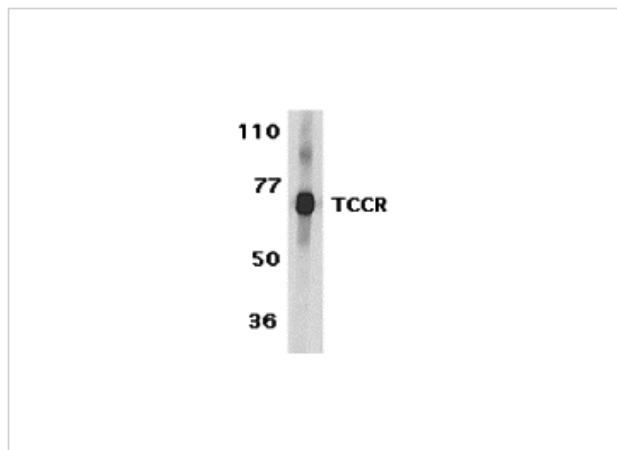
CATALOG NUMBER: 2481

### Specifications

Host Species	Rabbit
Species Reactivity	Human
Homology	Predicted species reactivity based on immunogen sequence: Mouse: (87%)
Immunogen	TCCR antibody was raised against a synthetic peptide corresponding to amino acids near the amino terminus of human TCCR precursor. The immunogen is located within the first 50 amino acids of TCCR.
Conjugate	Unconjugated
Tested Applications	ELISA, IF, IHC-P, WB
User Note	Optimal dilutions for each application to be determined by the researcher.
Predicted Molecular Weight	70 kDa

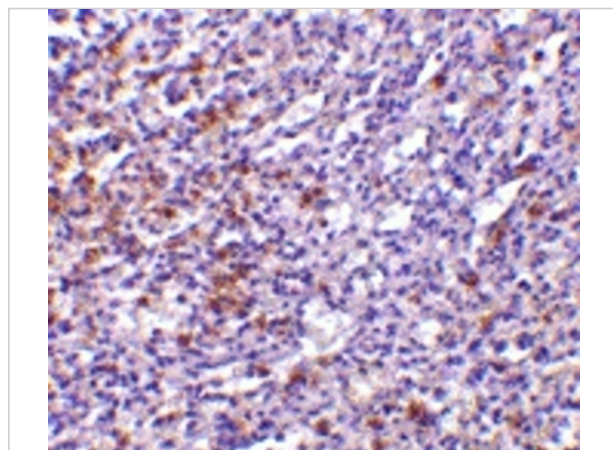
### Properties

Purification	TCCR Antibody is affinity chromatography purified via peptide column.
Clonality	Polyclonal
Isotype	IgG
Physical State	Liquid
Buffer	TCCR Antibody is supplied in PBS containing 0.02% sodium azide.
Concentration	1 mg/ml
Storage Conditions	TCCR antibody can be stored at 4°C for three months and -20°C, stable for up to one year. As with all antibodies care should be taken to avoid repeated freeze thaw cycles. Antibodies should not be exposed to prolonged high temperatures.



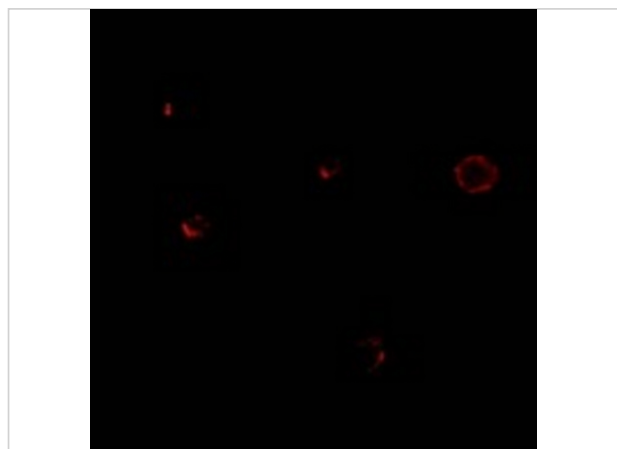
### TCCR Antibody 1

Western blot analysis of TCCR expression in human spleen tissue lysates with TCCR antibody at 1 µg/ml.



### TCCR Antibody 2

Immunohistochemistry of TCCR in human spleen tissue with TCCR antibody at 10 µg/mL.



### TCCR Antibody 3

Immunofluorescence of TCCR in A549 cells with TCCR antibody at 20 µg/mL.

## Disclaimer

#### Disclaimer

Optimal dilutions/concentrations should be determined by the end user. The information provided is a guideline for product use. This product is for research use only.

For research use only. For additional information, visit ProSci's [Terms and Conditions Page](#).