

IRF8 Antibody

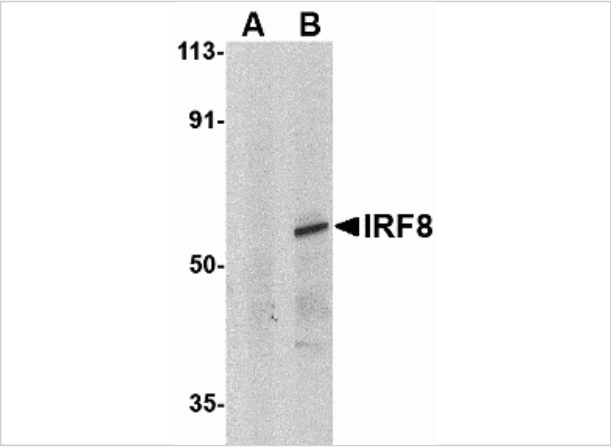
CATALOG NUMBER: 3401

Specifications

Host Species	Rabbit
Species Reactivity	Human, Mouse, Rat
Immunogen	IRF8 antibody was raised against a peptide corresponding to 16 amino acids near the carboxy terminus of human IRF8. The immunogen is located within the last 50 amino acids of IRF8.
Conjugate	Unconjugated
Tested Applications	ELISA, IF, WB
User Note	Optimal dilutions for each application to be determined by the researcher.

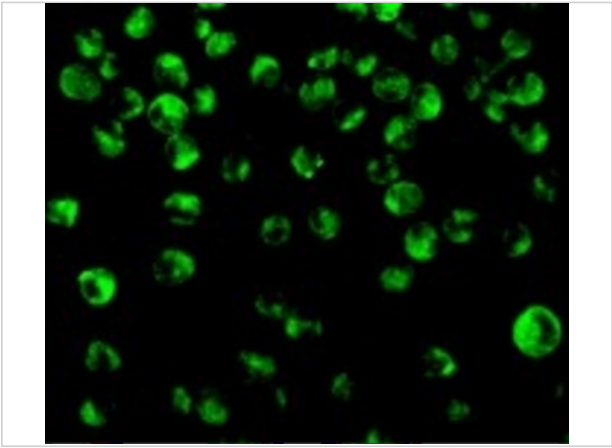
Properties

Purification	IRF8 Antibody is affinity chromatography purified via peptide column.
Clonality	Polyclonal
Isotype	IgG
Physical State	Liquid
Buffer	IRF8 Antibody is supplied in PBS containing 0.02% sodium azide.
Concentration	1 mg/mL
Storage Conditions	IRF8 antibody can be stored at 4°C for three months and -20°C, stable for up to one year. As with all antibodies care should be taken to avoid repeated freeze thaw cycles. Antibodies should not be exposed to prolonged high temperatures.



IRF8 Antibody 1

Western blot analysis of IRF8 in human thymus tissue lysate with IRF8 antibody at 1µg/mL in (A) the presence and (B) absence of blocking peptide.



IRF8 Antibody 2

Immunofluorescence of IRF8 in K562 cells with IRF8 antibody at 10 µg/mL.

Disclaimer

Disclaimer	Optimal dilutions/concentrations should be determined by the end user. The information provided is a guideline for product use. This product is for research use only.
------------	--

For research use only. For additional information, visit ProSci's [Terms and Conditions Page](#).