

PERP Antibody

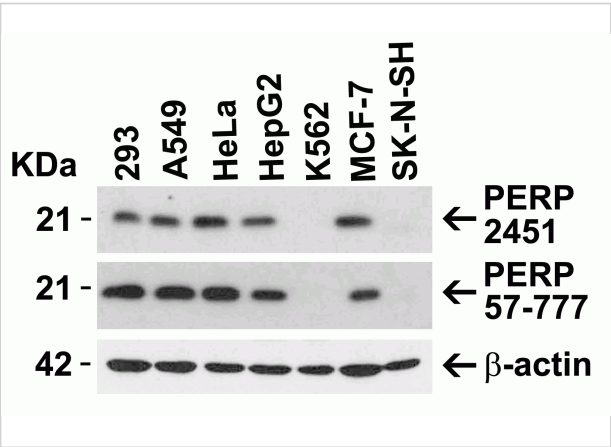
CATALOG NUMBER: 2451

Specifications

Host Species	Rabbit
Species Reactivity	Human
Homology	Predicted species reactivity based on immunogen sequence: Rat (100%); Mouse (82%)
Immunogen	Anti-PERP antibody (2451) was raised against a peptide corresponding to 17 amino acids near the carboxy terminus of human PERP. The immunogen is located within the last 50 amino acids of PERP.
Conjugate	Unconjugated
Tested Applications	ELISA, ICC, WB
User Note	Optimal dilutions for each application to be determined by the researcher.
Predicted Molecular Weight	Predicted: 21kD Observed: 21 kD

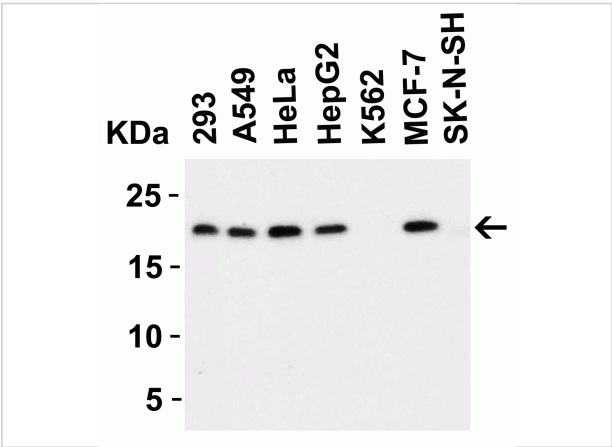
Properties

Purification	PERP Antibody is affinity chromatography purified via peptide column.
Clonality	Polyclonal
Isotype	IgG
Physical State	Liquid
Buffer	PERP Antibody is supplied in PBS containing 0.02% sodium azide.
Concentration	1 mg/mL
Storage Conditions	PERP antibody can be stored at 4°C for three months and -20°C, stable for up to one year. As with all antibodies care should be taken to avoid repeated freeze thaw cycles. Antibodies should not be exposed to prolonged high temperatures.



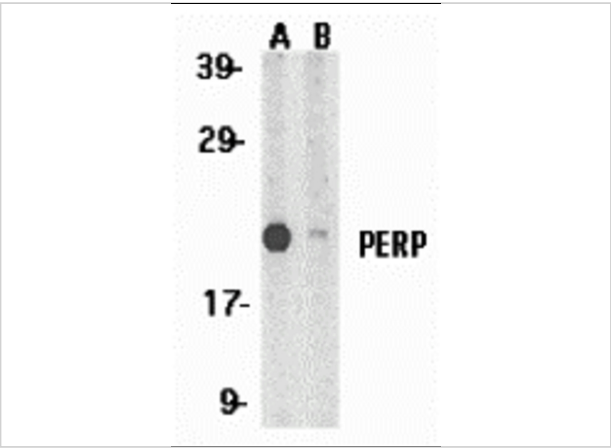
PERP Antibody 1

Figure 1 Independent Antibody Validation (IAV) via Protein Expression Profile in Human Cell Lines
 Loading: 15 µg of lysates per lane. Antibodies: PERP 2451 (1 µg/mL), PERP, 57-77...



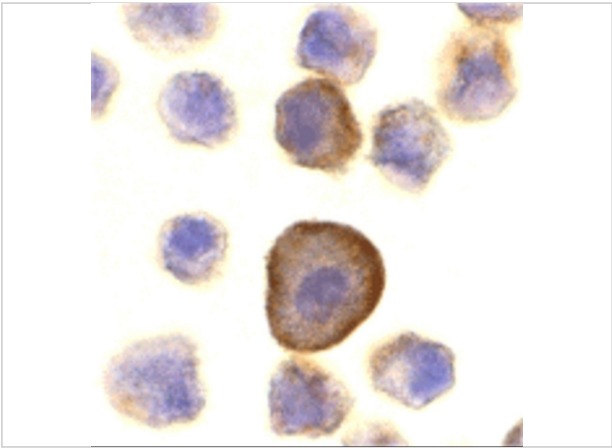
PERP Antibody 2

Figure 2 Western Blot Validation in Human Cell Lines
 Loading: 15 µg of lysates per lane. Antibodies: PERP 2451 (1 µg/mL), 1h incubation at RT in 5% NFDN/TBST. Secondary: Goat anti...



PERP Antibody 3

Figure 3 Western Blot Validation in Human A431 whole cell lysates in the Absence (A) and Presence (B) of Blocking Peptide
 Loading: 15 µg of lysates per lane. Antibodies: PERP 245...



PERP Antibody 4

Figure 4 Immunocytochemistry Validation of PERP in A431 Cells
 Immunocytochemical analysis of A431 cells using anti-PERP antibody (2451) at 10 µg/mL. Cells was fixed with formald...

Disclaimer

Disclaimer	Optimal dilutions/concentrations should be determined by the end user. The information provided is a guideline for product use. This product is for research use only.
-------------------	--

For research use only. For additional information, visit ProSci's [Terms and Conditions Page](#).