

## XIAP Antibody

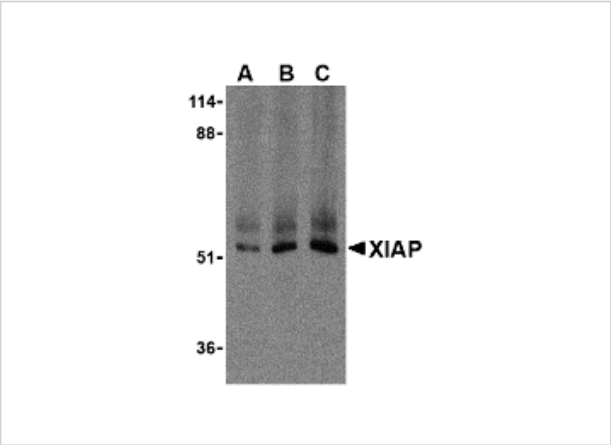
CATALOG NUMBER: 3331

### Specifications

Host Species	Rabbit
Species Reactivity	Human, Mouse
Homology	Predicted species reactivity based on immunogen sequence: Rat: (100%), Pig: (85%), Chicken: (91%)
Immunogen	XIAP antibody was raised against a synthetic peptide corresponding to 13 amino acids at the C-terminus of human XIAP. The immunogen is located within amino acids 420 - 470 of XIAP.
Conjugate	Unconjugated
Tested Applications	ELISA, IF, IHC-P, WB
User Note	Optimal dilutions for each application to be determined by the researcher.
Predicted Molecular Weight	Predicted: 55 kDa Observed: 53 kDa

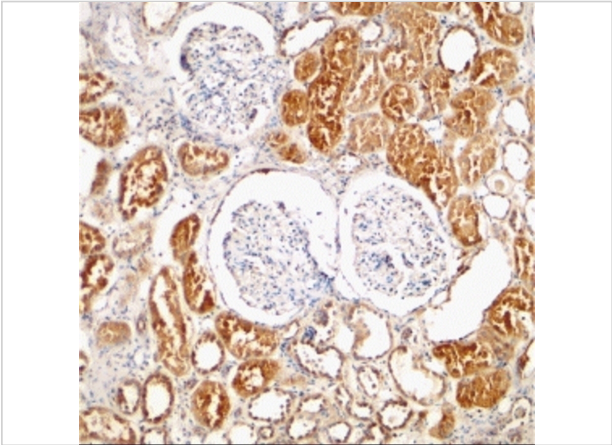
### Properties

Purification	XIAP Antibody is affinity chromatography purified via peptide column.
Clonality	Polyclonal
Isotype	IgG
Physical State	Liquid
Buffer	XIAP Antibody is supplied in PBS containing 0.02% sodium azide.
Concentration	1 mg/mL
Storage Conditions	XIAP antibody can be stored at 4°C up to one year. Antibodies should not be exposed to prolonged high temperatures.



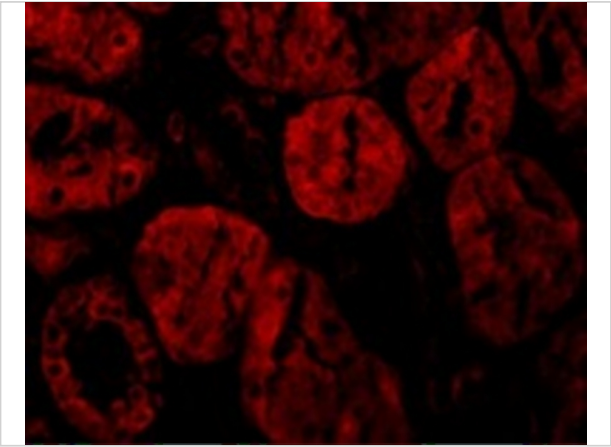
### XIAP Antibody 1

Western blot analysis of XIAP in human kidney lysate with XIAP antibody at (A) 0.5, (B) 1, and (C) 2  $\mu\text{g/mL}$ , respectively.



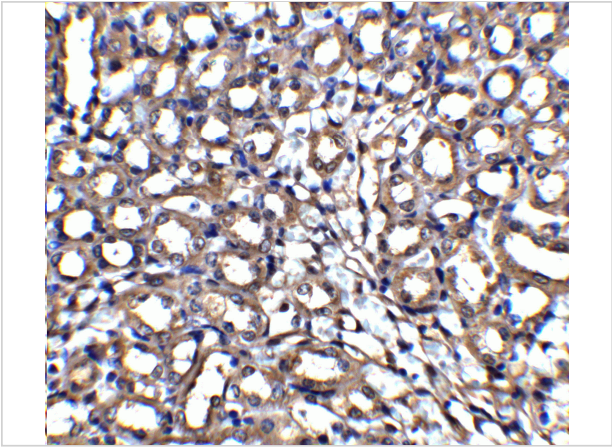
### XIAP Antibody 2

Immunohistochemical staining of human kidney tissue using XIAP antibody at 2  $\mu\text{g/mL}$ .



### XIAP Antibody 3

Immunofluorescence of XIAP in Human Kidney tissue with XIAP antibody at 10  $\mu\text{g/mL}$ .



### XIAP Antibody 4

Immunohistochemistry of XIAP in mouse kidney tissue with XIAP antibody at 5  $\mu\text{g/mL}$ .

## Disclaimer

<b>Disclaimer</b>	Optimal dilutions/concentrations should be determined by the end user. The information provided is a guideline for product use. This product is for research use only.
-------------------	--

For research use only. For additional information, visit ProSci's [Terms and Conditions Page](#).