

clAP Antibody

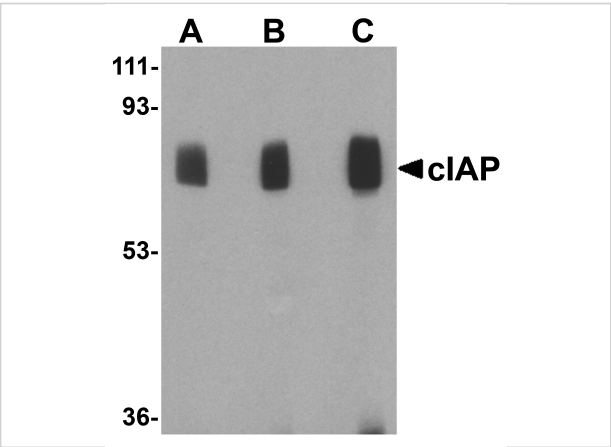
CATALOG NUMBER: 3325

Specifications

Host Species	Rabbit
Species Reactivity	Human, Mouse, Rat
Homology	Predicted species reactivity based on immunogen sequence: Pig: (93%), Chicken: (92%)
Immunogen	Anti-clAP antibody (3325) was raised against a peptide corresponding to 14 amino acids near the carboxy terminus of human clAP. c-IAP antibody detects both c-IAP1 and c-IAP2. The immunogen is located within amino acids 540-590 of clAP.
Conjugate	Unconjugated
Tested Applications	ELISA, IF, IHC-P, WB
User Note	Optimal dilutions for each application to be determined by the researcher.
Predicted Molecular Weight	Predicted: 70kD Observed: 70kD

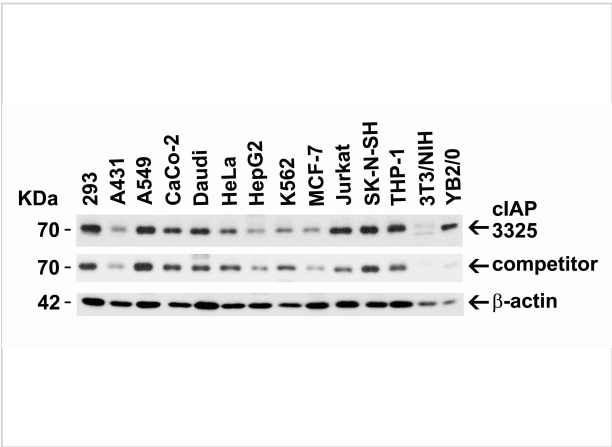
Properties

Purification	clAP Antibody is affinity chromatography purified via peptide column.
Clonality	Polyclonal
Isotype	IgG
Physical State	Liquid
Buffer	clAP Antibody is supplied in PBS containing 0.02% sodium azide.
Concentration	1 mg/mL
Storage Conditions	clAP antibody can be stored at 4°C for three months and -20°C, stable for up to one year. As with all antibodies care should be taken to avoid repeated freeze thaw cycles. Antibodies should not be exposed to prolonged high temperatures.



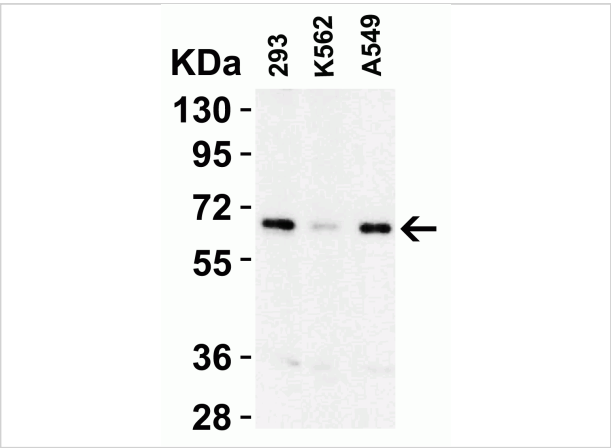
cIAP Antibody 1

Figure 1 Western Blot Validation in Human Lung Lysate
 Loading: 15 µg of lysates per lane. Antibodies: cIAP 3325 (A: 1 µg/mL, B: 2 µg/mL and C: 4 µg/mL), 1h incubation at RT in 5...



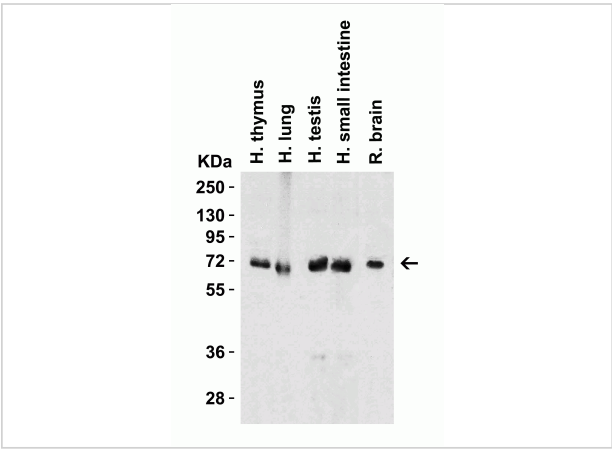
cIAP Antibody 2

Figure 2 Independent Antibody Validation (IAV) via Protein Expression Profile in Human, Mouse and Rat Cell Lines
 Loading: 15 µg of lysates per lane. Antibodies: cIAP 3325 (2 µg/mL), 1h incubation at RT in 5...



cIAP Antibody 3

Figure 3 Western Blot Validation in Human Cell Lines
 Loading: 15 µg of lysates per lane. Antibodies: cIAP 3325 (2 µg/mL), 1h incubation at RT in 5% NFD...
 Secondary: Goat ant...



cIAP Antibody 4

Figure 4 Western Blot Validation in Human and Rat Tissue Lysates
 Loading: 15 µg of lysates per lane. Antibodies: cIAP 3325 (1 µg/mL), 1h incubation at RT in 5% NFD...
 Seconda...

Disclaimer

Disclaimer

Optimal dilutions/concentrations should be determined by the end user. The information provided is a guideline for product use. This product is for research use only.