

DAD1 Antibody

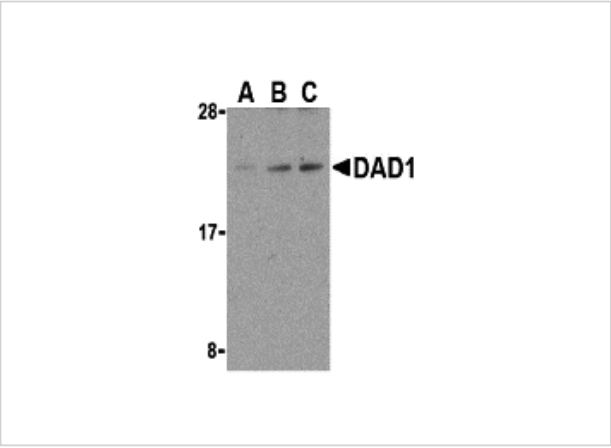
CATALOG NUMBER: 3313

Specifications

Host Species	Rabbit
Species Reactivity	Human, Mouse
Homology	Predicted species reactivity based on immunogen sequence: Rat: (100%), Pig: (100%), Bovine: (100%), Chicken: (85%)
Immunogen	DAD1 antibody was raised against a peptide corresponding to 14 amino acids near the C-terminus of human DAD1. The immunogen is located within the last 50 amino acids of DAD1.
Conjugate	Unconjugated
Tested Applications	ELISA, ICC, IF, WB
User Note	Optimal dilutions for each application to be determined by the researcher.

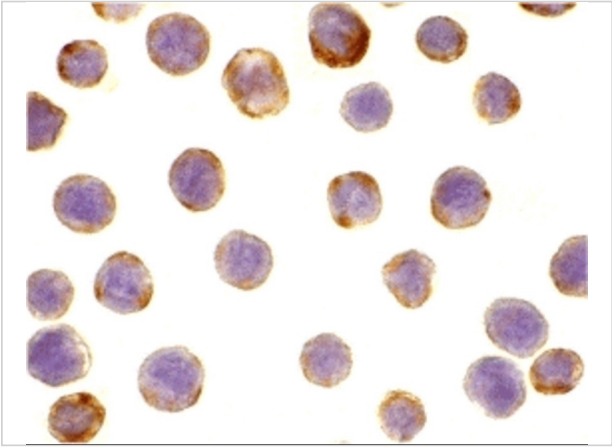
Properties

Purification	DAD1 Antibody is affinity chromatography purified via peptide column.
Clonality	Polyclonal
Isotype	IgG
Physical State	Liquid
Buffer	DAD1 Antibody is supplied in PBS containing 0.02% sodium azide.
Concentration	1 mg/mL
Storage Conditions	DAD1 antibody can be stored at 4°C for three months and -20°C, stable for up to one year. As with all antibodies care should be taken to avoid repeated freeze thaw cycles. Antibodies should not be exposed to prolonged high temperatures.



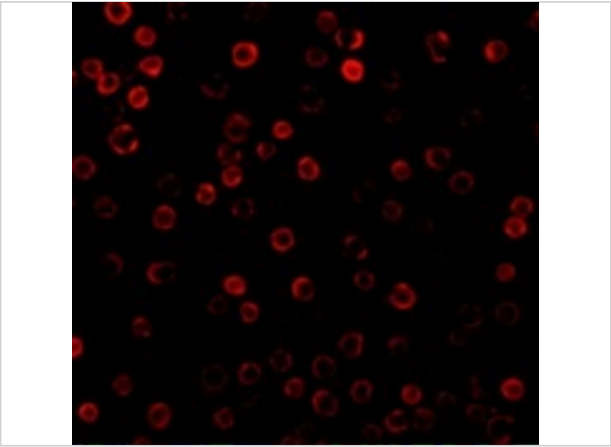
DAD1 Antibody 1

Western blot analysis of DAD1 in HepG2 cell lysate with DAD1 antibody at (A) 0.5, (B) 1, and (C) 2 $\mu\text{g/mL}$.



DAD1 Antibody 2

Immunocytochemistry of DAD1 in HepG2 cells with DAD1 antibody at 10 $\mu\text{g/mL}$.



DAD1 Antibody 3

Immunofluorescence of DAD1 in HepG2 cells with DAD1 antibody at 10 $\mu\text{g/mL}$.

Disclaimer

Disclaimer	Optimal dilutions/concentrations should be determined by the end user. The information provided is a guideline for product use. This product is for research use only.
------------	--

For research use only. For additional information, visit ProSci's [Terms and Conditions Page](#).