

## BRUCE Antibody

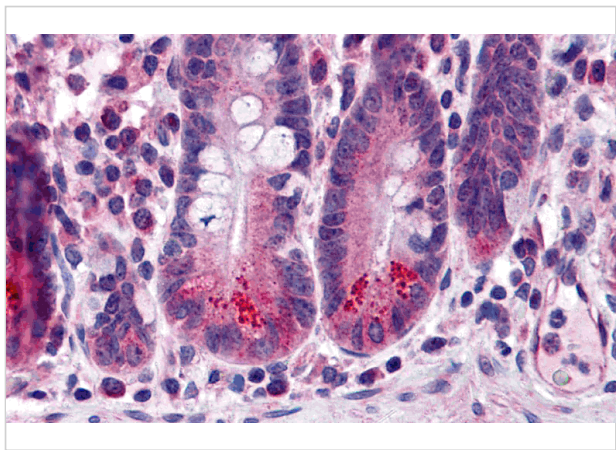
CATALOG NUMBER: 3309

### Specifications

Host Species	Rabbit
Species Reactivity	Human
Homology	Predicted species reactivity based on immunogen sequence: Mouse: (100%)
Immunogen	BRUCE antibody was raised against a 17 amino acid synthetic peptide near the carboxy terminus of human BRUCE. The immunogen is located within amino acids 4760 - 4810 of BRUCE.
Conjugate	Unconjugated
Tested Applications	ELISA, IHC-P
User Note	Optimal dilutions for each application to be determined by the researcher.
Specificity	BRUCE antibody is human specific. Multiple isoforms of BRUCE are known to exist.
Predicted Molecular Weight	534 kDa

### Properties

Purification	BRUCE Antibody is affinity chromatography purified via peptide column.
Clonality	Polyclonal
Isotype	IgG
Physical State	Liquid
Buffer	BRUCE Antibody is supplied in PBS containing 0.02% sodium azide.
Concentration	1 mg/mL
Storage Conditions	BRUCE antibody can be stored at 4°C for three months and -20°C, stable for up to one year. As with all antibodies care should be taken to avoid repeated freeze thaw cycles. Antibodies should not be exposed to prolonged high temperatures.



## BRUCE Antibody 1

Immunohistochemistry of BRUCE in human small intestine tissue with BRUCE antibody at 5 µg/mL.

## Disclaimer

Disclaimer	Optimal dilutions/concentrations should be determined by the end user. The information provided is a guideline for product use. This product is for research use only.
------------	--

For research use only. For additional information, visit ProSci's [Terms and Conditions Page](#).