

## SARM Antibody

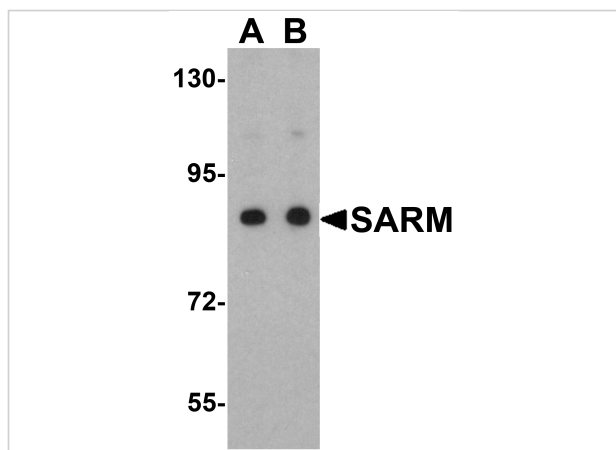
CATALOG NUMBER: 3295

### Specifications

Host Species	Rabbit
Species Reactivity	Human, Mouse
Homology	Predicted species reactivity based on immunogen sequence: Pig: (86%)
Immunogen	SARM antibody was raised against a peptide corresponding to 14 amino acids near the C-terminus of human SARM. The immunogen is located within amino acids 640 - 690 of SARM.
Conjugate	Unconjugated
Tested Applications	ELISA, ICC, IF, WB
User Note	Optimal dilutions for each application to be determined by the researcher.
Predicted Molecular Weight	Predicted: 80 kDa Observed: 85 kDa

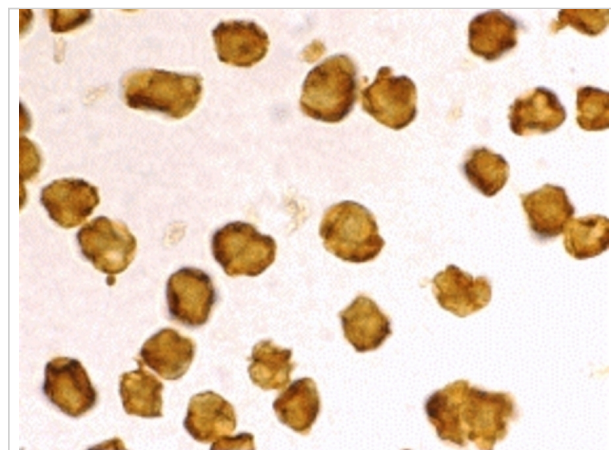
### Properties

Purification	SARM Antibody is affinity chromatography purified via peptide column.
Clonality	Polyclonal
Isotype	IgG
Physical State	Liquid
Buffer	SARM Antibody is supplied in PBS containing 0.02% sodium azide.
Concentration	1 mg/mL
Storage Conditions	SARM antibody can be stored at 4°C up to one year. Antibodies should not be exposed to prolonged high temperatures.



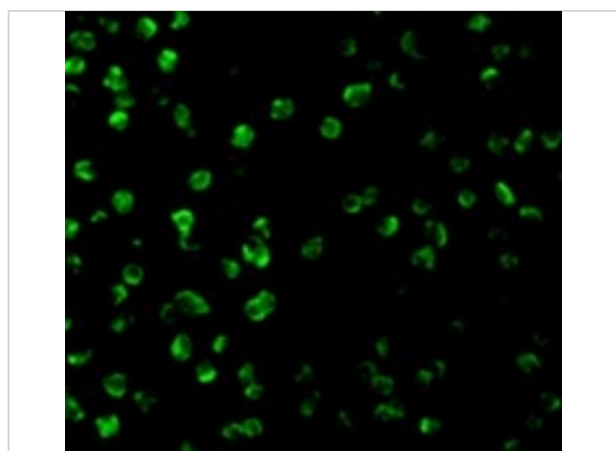
## SARM Antibody 1

Western blot analysis of SARM in Daudi cell lysate with SARM antibody at (A) 0.5 and (B) 1  $\mu$ g/mL.



## SARM Antibody 2

Immunocytochemistry staining of Daudi cells using SARM antibody at 2  $\mu$ g/mL.



## SARM Antibody 3

Immunofluorescence of SARM in Daudi cells with SARM antibody at 2  $\mu$ g/mL.

## Disclaimer

### Disclaimer

Optimal dilutions/concentrations should be determined by the end user. The information provided is a guideline for product use. This product is for research use only.

For research use only. For additional information, visit ProSci's [Terms and Conditions Page](#).