

## TLR10 Antibody

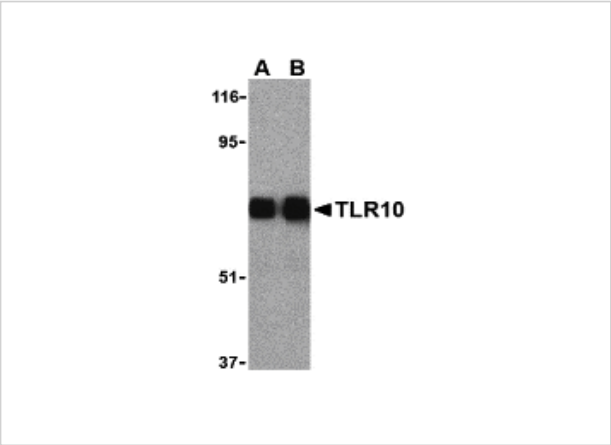
CATALOG NUMBER: 3275

### Specifications

Host Species	Rabbit
Species Reactivity	Human
Homology	Predicted species reactivity based on immunogen sequence: Bovine: (100%)
Immunogen	TLR10 antibody was raised against a peptide corresponding to 14 amino acids near the middle of human TLR10. The immunogen is located within amino acids 600 - 650 of TLR10.
Conjugate	Unconjugated
Tested Applications	ELISA, IF, WB
User Note	Optimal dilutions for each application to be determined by the researcher.

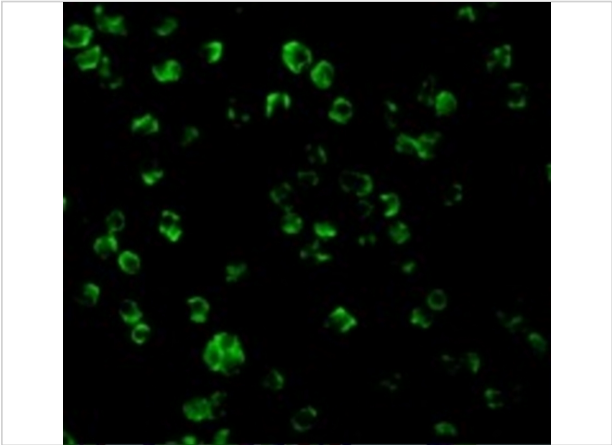
### Properties

Purification	TLR10 Antibody is Ion exchange chromatography purified.
Clonality	Polyclonal
Isotype	IgG
Physical State	Liquid
Buffer	TLR10 Antibody is supplied in PBS containing 0.02% sodium azide.
Concentration	1 mg/mL
Storage Conditions	TLR10 antibody can be stored at 4°C for three months and -20°C, stable for up to one year. As with all antibodies care should be taken to avoid repeated freeze thaw cycles. Antibodies should not be exposed to prolonged high temperatures.



TLR10 Antibody 1

Western blot analysis of TLR10 in human lymph node cell lysates with TLR10 antibody (IN) at (A) 0.5 and (B) 1 µg/mL.



TLR10 Antibody 2

Immunofluorescence of TLR10 in Daudi cells with TLR10 antibody at 2 µg/mL.

Disclaimer

Disclaimer	Optimal dilutions/concentrations should be determined by the end user. The information provided is a guideline for product use. This product is for research use only.
------------	--

For research use only. For additional information, visit ProSci's [Terms and Conditions Page](#).