

APOBEC3G Antibody

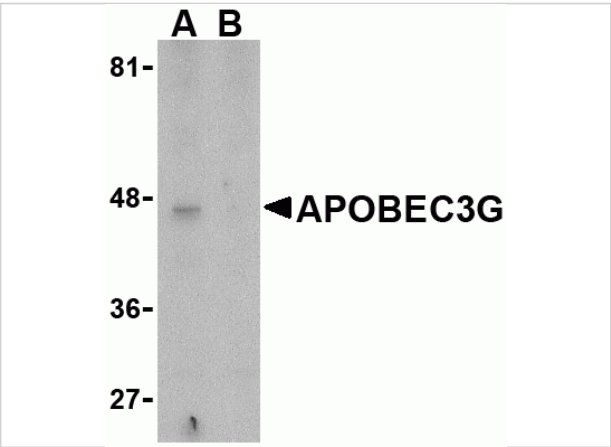
CATALOG NUMBER: 3257

Specifications

Host Species	Rabbit
Species Reactivity	Human
Immunogen	APOBEC3G antibody was raised against a synthetic peptide corresponding to 15 amino acids near the amino-terminus of human APOBEC3G. The immunogen is located within the first 50 amino acids of APOBEC3G.
Conjugate	Unconjugated
Tested Applications	ELISA, IHC-P, WB
User Note	Optimal dilutions for each application to be determined by the researcher.
Specificity	APOBEC3G antibody will also detect the APOBEC3F isoform.

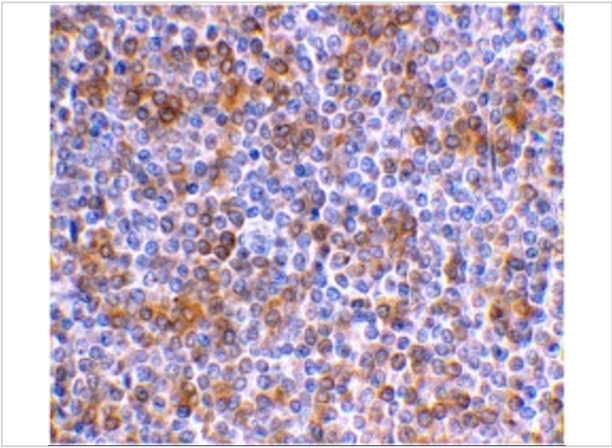
Properties

Purification	APOBEC3G Antibody is affinity chromatography purified via peptide column.
Clonality	Polyclonal
Isotype	IgG
Physical State	Liquid
Buffer	APOBEC3G Antibody is supplied in PBS containing 0.02% sodium azide.
Concentration	1 mg/mL
Storage Conditions	APOBEC3G antibody can be stored at 4°C for three months and -20°C, stable for up to one year. As with all antibodies care should be taken to avoid repeated freeze thaw cycles. Antibodies should not be exposed to prolonged high temperatures.



APOBEC3G Antibody 1

Western blot analysis of APOBEC3G expression in Caco-2 cell lysate in the (A), absence and (B) presence of blocking peptide with APOBEC3G antibody at 5 µg/mL.



APOBEC3G Antibody 2

Immunohistochemical staining of human spleen using APOBEC3G antibody at 1 µg/mL.

Disclaimer

Disclaimer	Optimal dilutions/concentrations should be determined by the end user. The information provided is a guideline for product use. This product is for research use only.
------------	--

For research use only. For additional information, visit ProSci's [Terms and Conditions Page](#).