

ACE2 Antibody

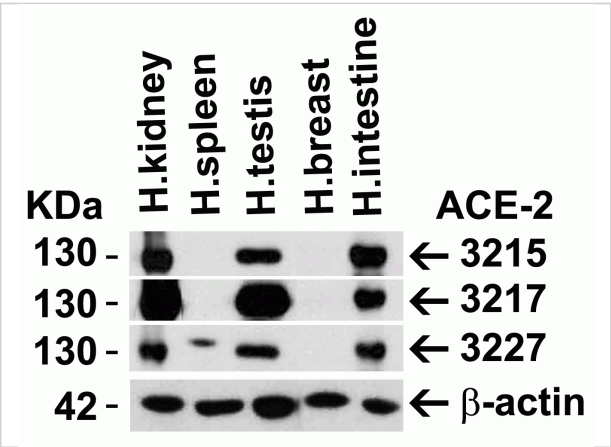
CATALOG NUMBER: 3215

Specifications

Host Species	Rabbit
Species Reactivity	Human, Mouse, Rat
Homology	Predicted species reactivity based on immunogen sequence: Bovine: (94%)
Immunogen	Anti-ACE2 antibody (3215) was raised against a peptide corresponding to 17 amino acids near the center of human ACE2. The immunogen is located within amino acids 180 - 230 of ACE2.
Conjugate	Unconjugated
Tested Applications	ELISA, IF, IHC-P, WB
User Note	Optimal dilutions for each application to be determined by the researcher.
Specificity	Anti-ACE2 has no cross response to ACE1.
Predicted Molecular Weight	Predicted: 93kD Observed: 130 kD (7 N-linked glycosylation)

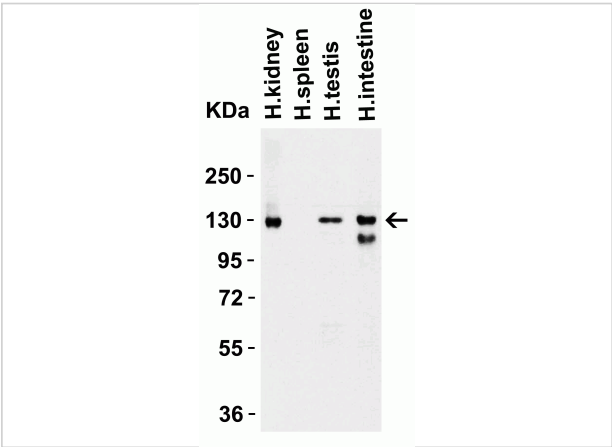
Properties

Purification	ACE2 Antibody is affinity chromatography purified via peptide column.
Clonality	Polyclonal
Isotype	IgG
Physical State	Liquid
Buffer	ACE2 Antibody is supplied in PBS containing 0.02% sodium azide.
Concentration	1 mg/mL
Storage Conditions	ACE2 antibody can be stored at 4°C for three months and -20°C, stable for up to one year. As with all antibodies care should be taken to avoid repeated freeze thaw cycles. Antibodies should not be exposed to prolonged high temperatures.



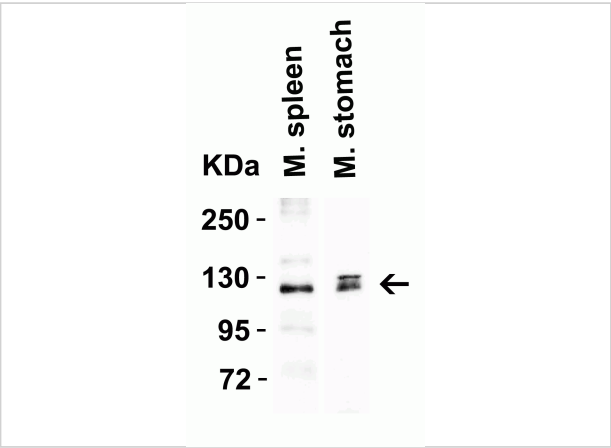
ACE2 Antibody 1

Figure 1 Independent Antibody Validation (IAV) via Protein Expression Profile in Human Tissues
 Loading: 15 µg of lysates per lane. Antibodies: ACE2, 3215 (2 µg/mL), ACE2, 3217 (2 µg/mL), ACE2, 3227 (2 µg/mL). Secondary: Goat anti-mouse IgG (1:1000). Blotting: ECL Western Substrate.



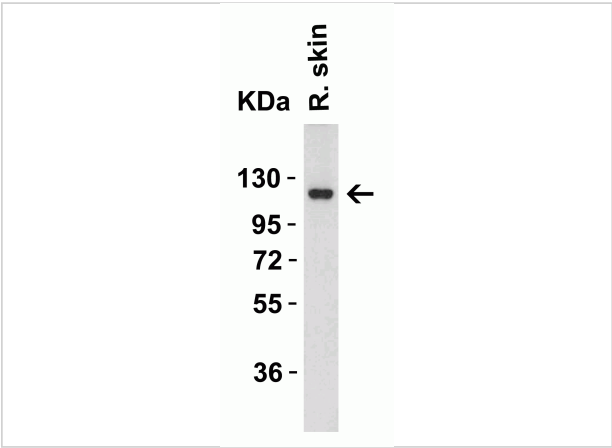
ACE2 Antibody 2

Figure 2 Western Blot Validation in Human Tissues
 Loading: 15 µg of lysates per lane. Antibodies: ACE2, 3215 (2 µg/mL), 1h incubation at RT in 5% NFDN/TBST. Secondary: Goat anti-mouse IgG (1:1000). Blotting: ECL Western Substrate.



ACE2 Antibody 3

Figure 3 Western Blot Validation in Mouse Tissues
 Loading: 15 µg of lysates per lane. Antibodies: ACE2, 3215 (2 µg/mL), 1h incubation at RT in 5% NFDN/TBST. Secondary: Goat anti-mouse IgG (1:1000). Blotting: ECL Western Substrate.



ACE2 Antibody 4

Figure 4 Western Blot Validation in Rat Skin Tissue
 Loading: 15 µg of lysates per lane. Antibodies: ACE2, 3215 (2 µg/mL), 1h incubation at RT in 5% NFDN/TBST. Secondary: Goat anti-mouse IgG (1:1000). Blotting: ECL Western Substrate.

Disclaimer

Disclaimer	Optimal dilutions/concentrations should be determined by the end user. The information provided is a guideline for product use. This product is for research use only.
------------	--

For research use only. For additional information, visit ProSci's [Terms and Conditions Page](#).