

Caspase-12 Antibody (Small)

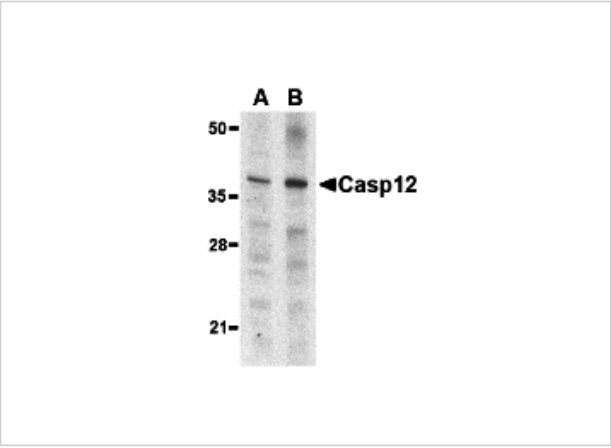
CATALOG NUMBER: 3197

Specifications

Host Species	Rabbit
Species Reactivity	Human, Mouse, Rat
Homology	Predicted species reactivity based on immunogen sequence: Bovine: (93%)
Immunogen	Caspase-12 antibody was raised against a synthetic peptide corresponding to 15 amino acids within the small cleavage product of murine caspase-12. The immunogen is located within the last 50 amino acids of Caspase-12 .
Conjugate	Unconjugated
Tested Applications	ELISA, IHC-P, WB
User Note	Optimal dilutions for each application to be determined by the researcher.
Predicted Molecular Weight	Predicted: 46 kDa (uncleaved) Observed: 38 kDa

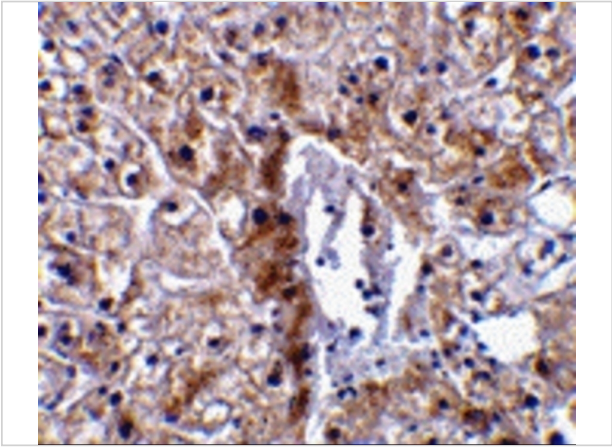
Properties

Purification	Caspase-12 Antibody (Small) is affinity chromatography purified via peptide column.
Clonality	Polyclonal
Isotype	IgG
Physical State	Liquid
Buffer	Caspase-12 Antibody is supplied in PBS containing 0.02% sodium azide. (Small)
Concentration	1 mg/mL
Storage Conditions	Caspase-12 antibody (Small) can be stored at -20°C, stable for one year. As with all antibodies care should be taken to avoid repeated freeze thaw cycles. Antibodies should not be exposed to prolonged high temperatures.



Caspase-12 Antibody (Small) 1

Western blot analysis of caspase-12 in mouse (lane A) and rat (lane B) liver lysate with caspase-12 antibody (small) at 1 µg/mL.



Caspase-12 Antibody (Small) 2

Immunohistochemical staining of human liver tissue using caspase-12 antibody (small) at 10 µg/mL.

Disclaimer

Disclaimer	Optimal dilutions/concentrations should be determined by the end user. The information provided is a guideline for product use. This product is for research use only.
------------	--

For research use only. For additional information, visit ProSci's [Terms and Conditions Page](#).