

CARMA3 Antibody

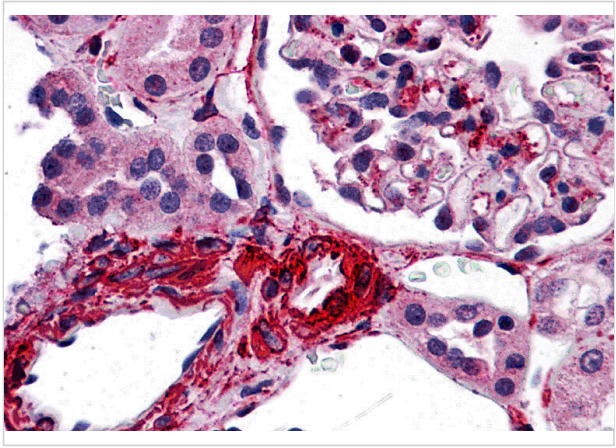
CATALOG NUMBER: 3193

Specifications

Host Species	Rabbit
Species Reactivity	Human
Homology	Predicted species reactivity based on immunogen sequence: Mouse: (81%)
Immunogen	CARMA3 antibody was raised against a 16 amino acid synthetic peptide near the amino terminus of human CARMA3. The immunogen is located within the first 50 amino acids of CARMA3.
Conjugate	Unconjugated
Tested Applications	ELISA, IHC-P
User Note	Optimal dilutions for each application to be determined by the researcher.
Specificity	CARMA3 antibody is human specific. At least three isoforms of CARMA3 are known to exist; this antibody will only detect isoform 1. CARMA3 antibody is predicted not to cross-react with other CARMA proteins.

Properties

Purification	CARMA3 Antibody is affinity chromatography purified via peptide column.
Clonality	Polyclonal
Isotype	IgG
Physical State	Liquid
Buffer	CARMA3 Antibody is supplied in PBS containing 0.02% sodium azide.
Concentration	1 mg/mL
Storage Conditions	CARMA3 antibody can be stored at 4°C for three months and -20°C, stable for up to one year. As with all antibodies care should be taken to avoid repeated freeze thaw cycles. Antibodies should not be exposed to prolonged high temperatures.



CARMA3 Antibody 1

Immunohistochemistry of CARMA3 in human kidney tissue with CARMA3 antibody at 5 µg/ml

Disclaimer

Disclaimer	Optimal dilutions/concentrations should be determined by the end user. The information provided is a guideline for product use. This product is for research use only.
------------	--

For research use only. For additional information, visit ProSci's [Terms and Conditions Page](#).