

Chk2 Antibody

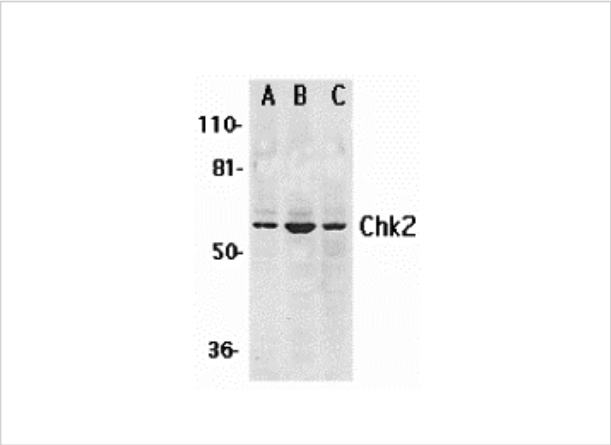
CATALOG NUMBER: 2391

Specifications

Host Species	Rabbit
Species Reactivity	Human, Mouse, Rat
Immunogen	Chk2 antibody was raised against a synthetic peptide corresponding to amino acids near the amino terminus of human Chk2. The immunogen is located within the first 50 amino acids of Chk2.
Conjugate	Unconjugated
Tested Applications	ELISA, ICC, IF, WB
User Note	Optimal dilutions for each application to be determined by the researcher.
Predicted Molecular Weight	Predicted: 60 kDa Observed: 60 kDa

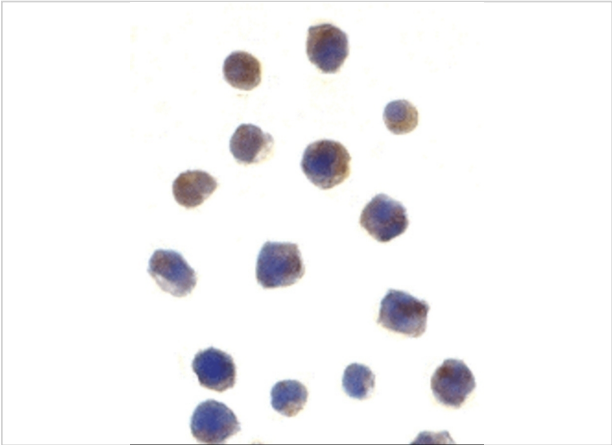
Properties

Purification	Chk2 Antibody is affinity chromatography purified via peptide column.
Clonality	Polyclonal
Isotype	IgG
Physical State	Liquid
Buffer	Chk2 Antibody is supplied in PBS containing 0.02% sodium azide.
Concentration	1 mg/mL
Storage Conditions	Chk2 antibody can be stored at 4°C for three months and -20°C, stable for up to one year. As with all antibodies care should be taken to avoid repeated freeze thaw cycles. Antibodies should not be exposed to prolonged high temperatures.



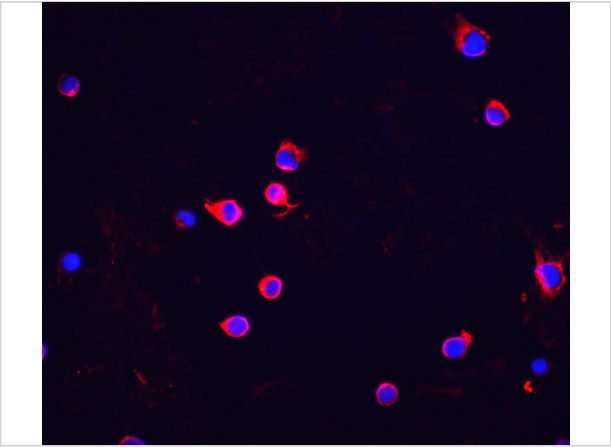
Chk2 Antibody 1

Western blot analysis of Chk2 expression in (A) K562, (B) Jurkat, and (C) HL-60 whole cell lysates with Chk2 antibody at 1 µg/mL.



Chk2 Antibody 2

Immunocytochemistry of Chk2 in Jurkat cells with Chk2 antibody at 1 µg/mL.



Chk2 Antibody 3

Immunofluorescence of Chk2 in Jurkat cells with Chk2 antibody at 5 µg/mL

Red: Chk2 Antibody (2391)
Blue: DAPI staining

Disclaimer

Disclaimer	Optimal dilutions/concentrations should be determined by the end user. The information provided is a guideline for product use. This product is for research use only.
------------	--

For research use only. For additional information, visit ProSci's [Terms and Conditions Page](#).