

TLR2 Antibody

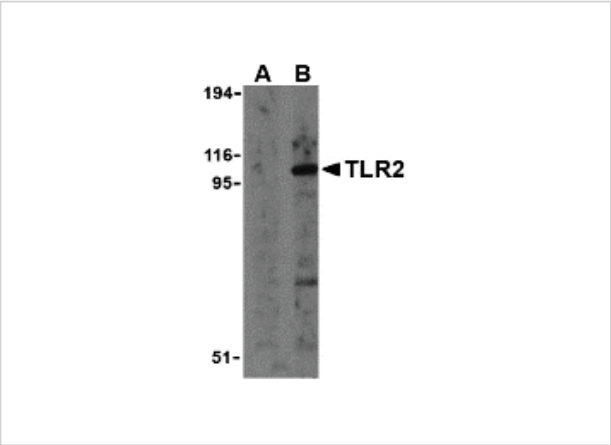
CATALOG NUMBER: 3135

Specifications

Host Species	Rabbit
Species Reactivity	Human, Mouse
Immunogen	TLR2 antibody was raised against a peptide corresponding to 14 amino acids near the amino terminus of human TLR2. The immunogen is located within the first 50 amino acids of TLR2.
Conjugate	Unconjugated
Tested Applications	ELISA, IF, IHC-P, WB
User Note	Optimal dilutions for each application to be determined by the researcher.

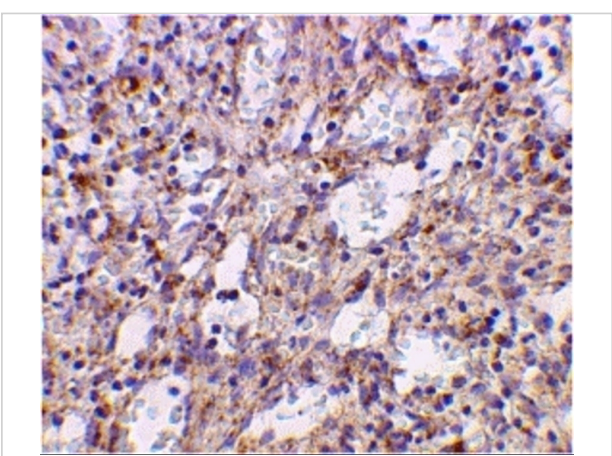
Properties

Purification	TLR2 Antibody is Ion exchange chromatography purified.
Clonality	Polyclonal
Isotype	IgG
Physical State	Liquid
Buffer	TLR2 Antibody is supplied in PBS containing 0.02% sodium azide.
Concentration	1 mg/mL
Storage Conditions	TLR2 antibody can be stored at 4°C for three months and -20°C, stable for up to one year. As with all antibodies care should be taken to avoid repeated freeze thaw cycles. Antibodies should not be exposed to prolonged high temperatures.



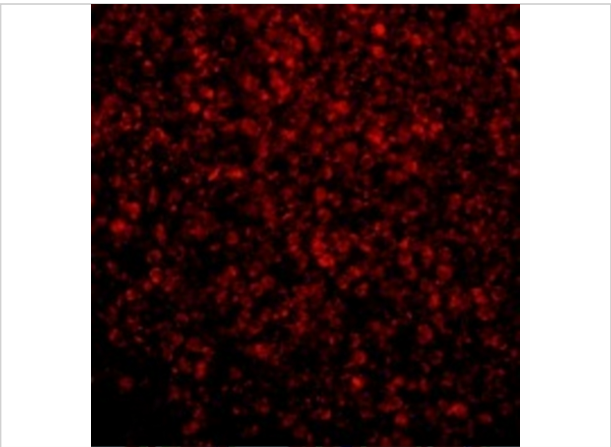
TLR2 Antibody 1

Western blot analysis of TLR2 in A20 cell lysates with TLR2 antibody at 1 µg/mL in the presence (A) and absence (B) of its blocking peptide.



TLR2 Antibody 2

Immunohistochemical staining of human spleen cells using TLR2 antibody at 2 µg/mL.



TLR2 Antibody 3

Immunofluorescence of TLR2 in Human Spleen tissue with TLR2 antibody at 10 µg/mL.

Disclaimer

Disclaimer	Optimal dilutions/concentrations should be determined by the end user. The information provided is a guideline for product use. This product is for research use only.
------------	--

For research use only. For additional information, visit ProSci's [Terms and Conditions Page](#).