

DC-SIGN Antibody

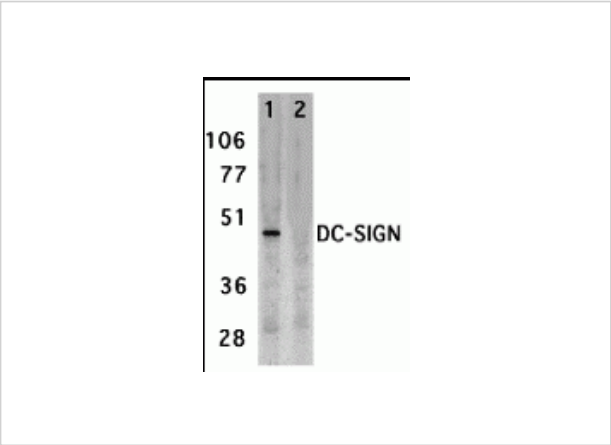
CATALOG NUMBER: 2349

Specifications

Host Species	Rabbit
Species Reactivity	Human
Homology	Predicted species reactivity based on immunogen sequence: Mouse: (76%)
Immunogen	DC-SIGN antibody was raised against a synthetic peptide corresponding to 17 amino acids near the center of human DC-SIGN. The immunogen is located within amino acids 250 - 300 of DC-SIGN.
Conjugate	Unconjugated
Tested Applications	ELISA, IHC-P, WB
User Note	Optimal dilutions for each application to be determined by the researcher.
Predicted Molecular Weight	Predicted: 44 kDa Observed: 47 kDa

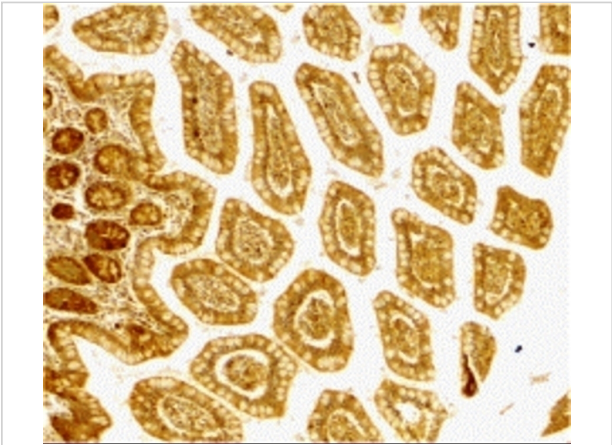
Properties

Purification	DC-SIGN Antibody is affinity chromatography purified via peptide column.
Clonality	Polyclonal
Isotype	IgG
Physical State	Liquid
Buffer	DC-SIGN Antibody is supplied in PBS containing 0.02% sodium azide.
Concentration	1 mg/mL
Storage Conditions	DC-SIGN antibody can be stored at 4°C for three months and -20°C, stable for up to one year. As with all antibodies care should be taken to avoid repeated freeze thaw cycles. Antibodies should not be exposed to prolonged high temperatures.



DC-SIGN Antibody 1

Western blot analysis of DC-SIGN expression in human placenta tissue lysate in the absence (lane 1) and presence (lane 2) of blocking peptide with DC-SIGN antibody at 2 µg/ml.



DC-SIGN Antibody 2

Immunohistochemistry of DC-SIGN in human small intestine tissue with DC-SIGN antibody at 10 µg/mL.

Disclaimer

Disclaimer	Optimal dilutions/concentrations should be determined by the end user. The information provided is a guideline for product use. This product is for research use only.
------------	------------------------------------------------------------------------------------------------------------------------------------------------------------------------

For research use only. For additional information, visit ProSci's [Terms and Conditions Page](#).