

PUMA Antibody

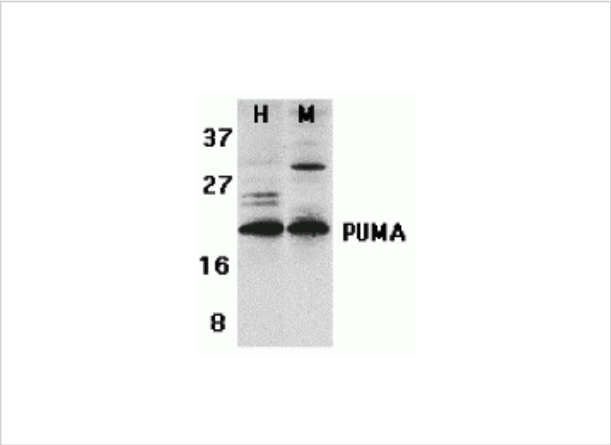
CATALOG NUMBER: 3041

Specifications

Host Species	Rabbit
Species Reactivity	Human, Mouse
Homology	Predicted species reactivity based on immunogen sequence: Rat: (100%)
Immunogen	Anti-PUMA antibody (3041) was raised against a peptide corresponding to 14 amino acids near the carboxyl terminus human PUMA isoform 1. The immunogen is located within the last 50 amino acids of PUMA.
Conjugate	Unconjugated
Tested Applications	ELISA, ICC, IF, WB
User Note	Optimal dilutions for each application to be determined by the researcher.
Specificity	A lower band at approximately 16 kDa was detected in Daudi and K562 cells, which may represent the PUMA isoform 2.
Predicted Molecular Weight	23 kDa

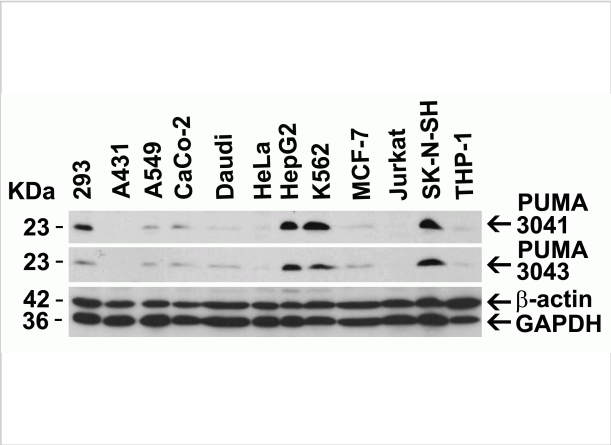
Properties

Purification	PUMA Antibody is affinity chromatography purified via peptide column.
Clonality	Polyclonal
Isotype	IgG
Physical State	Liquid
Buffer	PUMA Antibody is supplied in PBS containing 0.02% sodium azide.
Concentration	1 mg/mL
Storage Conditions	PUMA antibody can be stored at 4°C for three months and -20°C, stable for up to one year. As with all antibodies care should be taken to avoid repeated freeze thaw cycles. Antibodies should not be exposed to prolonged high temperatures.



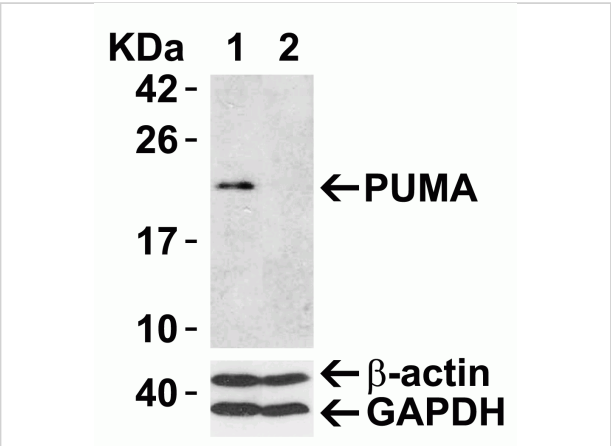
PUMA Antibody 1

Figure 1 Western Blot Validation of PUMA in K562 and 3T3/NIH Cells
 Loading: 15 µg of lysates per lane. Antibodies: 3041 (2 µg/mL), 1 h incubation at RT in 5% NFDm/TBST. Secondary:...



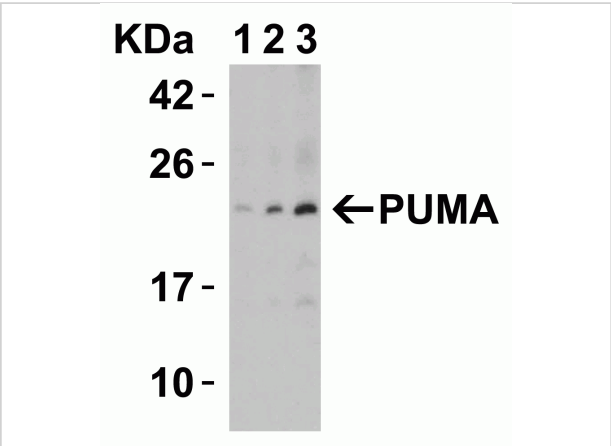
PUMA Antibody 2

Figure 2 Independent Antibody Validation (IAV) via Protein Expression Profile in Cell Lines
 Loading: 20 µg of lysates per lane. Antibodies: 3041 (3 µg/mL), 3043 (2 µg/mL), beta-a...



PUMA Antibody 3

Figure 3 Validation with PUMA siRNA Knockdown in 293 Cells
 293 cells were transfected with control siRNAs (lane 1) or PUMA siRNAs (lane 2). Loading: 15 µg of 293 whole cell lysa...



PUMA Antibody 4

Figure 4 Sensitivity Test for PUMA in 2983 Cells
 Loading: Lysates/proteins at 15 µg per lane. Antibodies: 3041 (lane 1-3: 1, 2 and 4 µg/mL). 1 h incubation at RT in 5% NFDm/TBST...

Disclaimer

Disclaimer

Optimal dilutions/concentrations should be determined by the end user. The information provided is a guideline for product use. This product is for research use only.