

Bmf Antibody

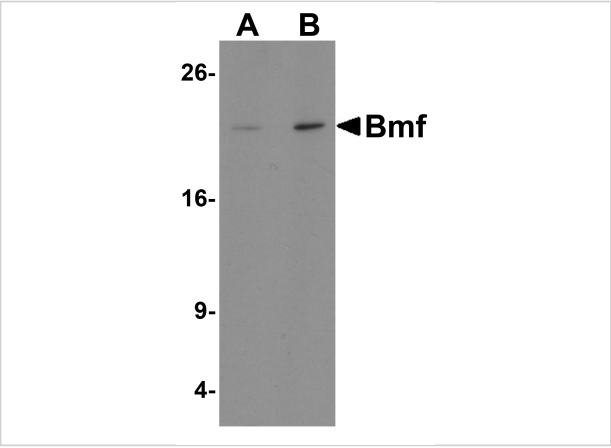
CATALOG NUMBER: 3031

Specifications

Host Species	Rabbit
Species Reactivity	Human, Mouse
Homology	Predicted species reactivity based on immunogen sequence: Rat: (92%)
Immunogen	Bmf antibody was raised with a synthetic peptide corresponding to 15 amino acids near the amino terminus of human Bmf. The immunogen is located within the first 50 amino acids of Bmf.
Conjugate	Unconjugated
Tested Applications	ELISA, ICC, WB
User Note	Optimal dilutions for each application to be determined by the researcher.
Predicted Molecular Weight	Predicted: 20 kDa Observed: 22 kDa

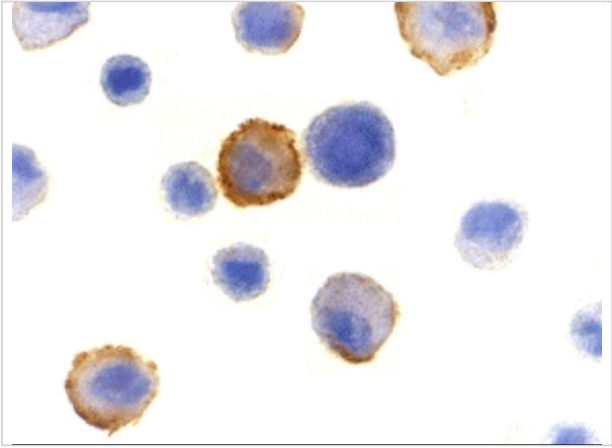
Properties

Purification	Bmf Antibody is affinity chromatography purified via peptide column.
Clonality	Polyclonal
Isotype	IgG
Physical State	Liquid
Buffer	Bmf Antibody is supplied in PBS containing 0.02% sodium azide.
Concentration	1 mg/mL
Storage Conditions	Bmf antibody can be stored at 4°C for three months and -20°C, stable for up to one year. As with all antibodies care should be taken to avoid repeated freeze thaw cycles. Antibodies should not be exposed to prolonged high temperatures.



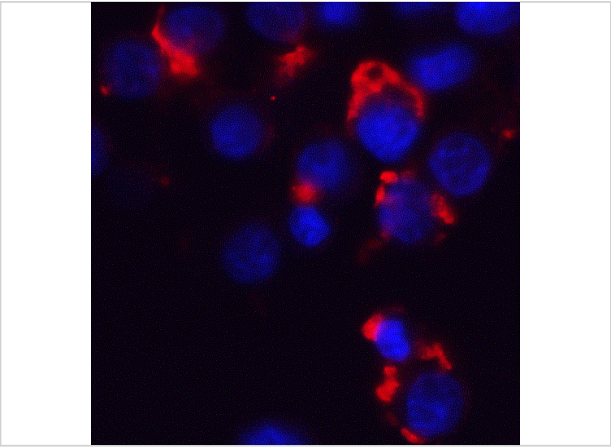
Bmf Antibody 1

Western blot analysis of Bmf in 293 cell lysate with Bmf antibody at (A) 1 and (B) 2 $\mu\text{g}/\text{mL}$.



Bmf Antibody 2

Immunocytochemistry of Bmf in HeLa cells with Bmf antibody at 10 $\mu\text{g}/\text{mL}$.



Bmf Antibody 3

Immunofluorescence of Bmf in HeLa cells with Bmf antibody at 5 $\mu\text{g}/\text{mL}$.

Red: Bmf Antibody (3031)
Blue: DAPI staining

Disclaimer

Disclaimer	Optimal dilutions/concentrations should be determined by the end user. The information provided is a guideline for product use. This product is for research use only.
------------	--

For research use only. For additional information, visit ProSci's [Terms and Conditions Page](#).