



ProSci Incorporated
12170 Flint Place
Poway, CA 92064, USA
prosci-inc.com

P: +1 (888) 513-9525
Local: +1 (858) 513-2638
Fax: +1 (858) 513-2692

customercare@prosci-inc.com
techsupport@prosci-inc.com

ARTS Antibody

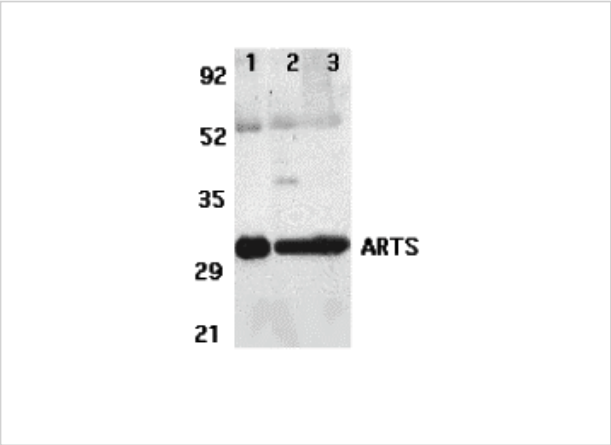
CATALOG NUMBER: 3025

Specifications

Host Species	Rabbit
Species Reactivity	Human
Immunogen	ARTS antibody was raised against a synthetic peptide corresponding to amino acids near the amino terminus of human ARTS. The immunogen is located within the first 50 amino acids of ARTS.
Conjugate	Unconjugated
Tested Applications	ELISA, IF, IHC-P, WB
User Note	Optimal dilutions for each application to be determined by the researcher.
Predicted Molecular Weight	32 kDa

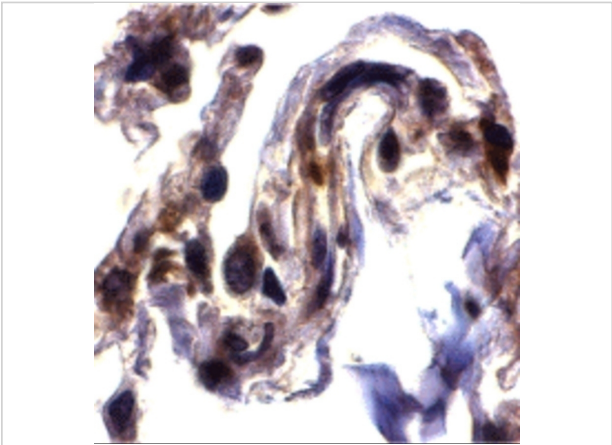
Properties

Purification	ARTS Antibody is affinity chromatography purified via peptide column.
Clonality	Polyclonal
Isotype	IgG
Physical State	Liquid
Buffer	ARTS Antibody is supplied in PBS containing 0.02% sodium azide.
Concentration	1 mg/mL
Storage Conditions	ARTS antibody can be stored at 4°C for three months and -20°C, stable for up to one year. As with all antibodies care should be taken to avoid repeated freeze thaw cycles. Antibodies should not be exposed to prolonged high temperatures.



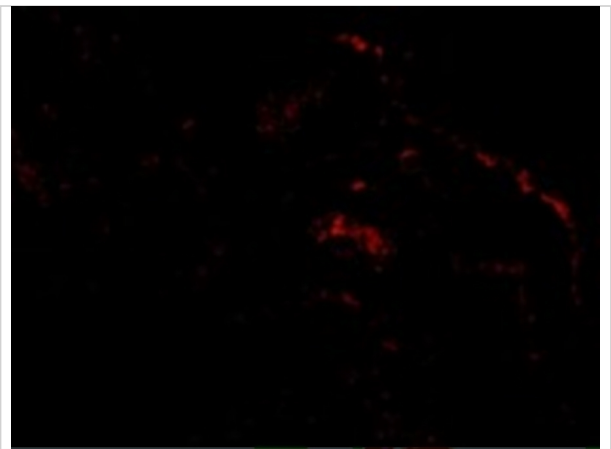
ARTS Antibody 1

Western blot analysis of ARTS expression in human lung (lane 1), spleen (lane 2), and kidney (lane 3) tissue lysates with ARTS antibody at 2 µg/ml.



ARTS Antibody 2

Immunohistochemistry of ARTS in human lung tissue with ARTS antibody at 2 µg/mL.



ARTS Antibody 3

Immunofluorescence of ARTS in Human Lung cells with ARTS antibody at 20 µg/mL.

Disclaimer

Disclaimer	Optimal dilutions/concentrations should be determined by the end user. The information provided is a guideline for product use. This product is for research use only.
------------	--

For research use only. For additional information, visit ProSci's [Terms and Conditions Page](#).