

Nudel Antibody

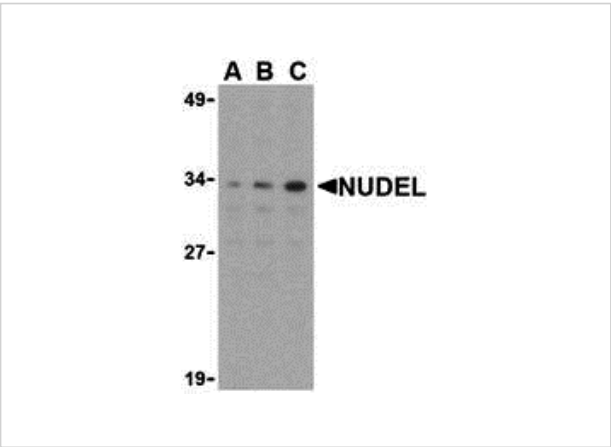
CATALOG NUMBER: 3009

Specifications

Host Species	Rabbit
Species Reactivity	Human, Mouse
Homology	Predicted species reactivity based on immunogen sequence: Rat: (100%), Rabbit: (100%), Chicken: (73%)
Immunogen	Nudel antibody was raised against a peptide corresponding to 15 amino acids near the amino terminus of human Nudel. The immunogen is located within the first 50 amino acids of Nudel.
Conjugate	Unconjugated
Tested Applications	ELISA, ICC, IF, WB
User Note	Optimal dilutions for each application to be determined by the researcher.

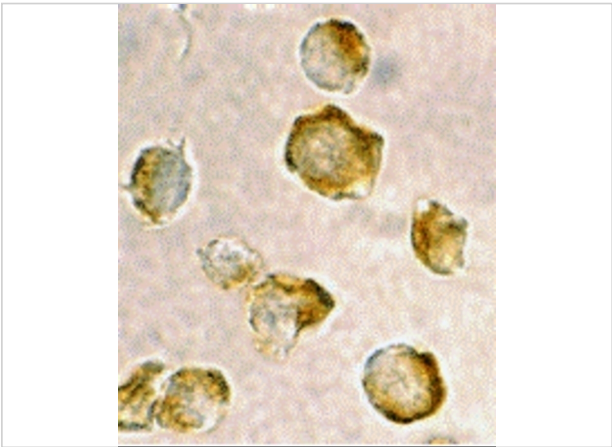
Properties

Purification	Nudel Antibody is affinity chromatography purified via peptide column.
Clonality	Polyclonal
Isotype	IgG
Physical State	Liquid
Buffer	Nudel Antibody is supplied in PBS containing 0.02% sodium azide.
Concentration	1 mg/mL
Storage Conditions	Nudel antibody can be stored at 4°C for three months and -20°C, stable for up to one year. As with all antibodies care should be taken to avoid repeated freeze thaw cycles. Antibodies should not be exposed to prolonged high temperatures.



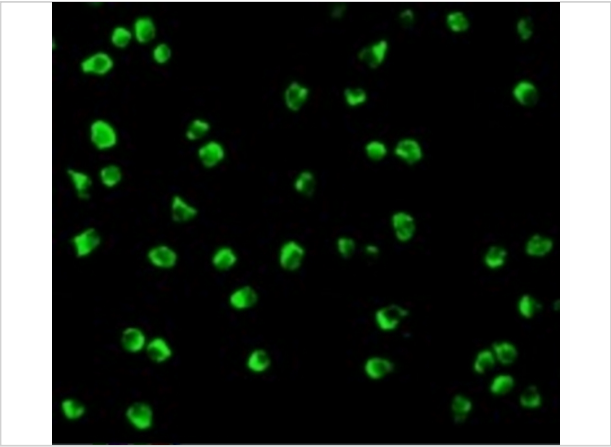
Nudel Antibody 1

Western blot analysis of Nudel in Jurkat whole cell lysate with Nudel antibody at (A) 0.5, (B) 1, or (C) 2 µg/mL.



Nudel Antibody 2

Immunocytochemistry of Nudel in Jurkat cells with Nudel antibody at 2 µg/mL.



Nudel Antibody 3

Immunofluorescence of Nudel in Jurkat cells with Nudel antibody at 10 µg/mL.

Disclaimer

Disclaimer	Optimal dilutions/concentrations should be determined by the end user. The information provided is a guideline for product use. This product is for research use only.
------------	--

For research use only. For additional information, visit ProSci's [Terms and Conditions Page](#).