

## Livin Antibody

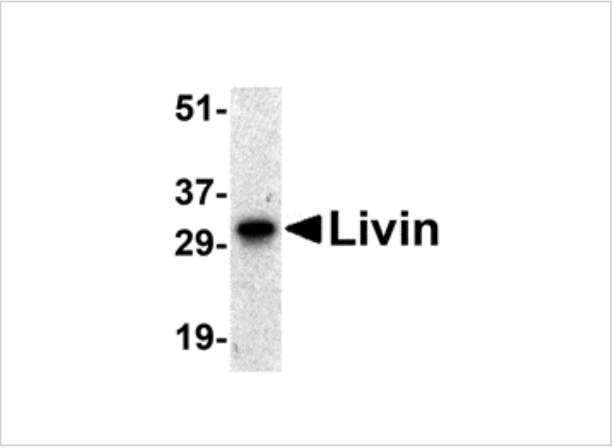
CATALOG NUMBER: 2505

### Specifications

Host Species	Rabbit
Species Reactivity	Human
Immunogen	Livin antibody was raised against a 17 amino acid peptide near the carboxy terminus of human Livin. The immunogen is located within the last 50 amino acids of Livin.
Conjugate	Unconjugated
Tested Applications	ELISA, IF, IHC-P, WB
User Note	Optimal dilutions for each application to be determined by the researcher.
Specificity	A lower but much weaker band at 30 kDa was detected in Raji cell lysate, which may represent the short form of Livin.
Predicted Molecular Weight	33 kDa

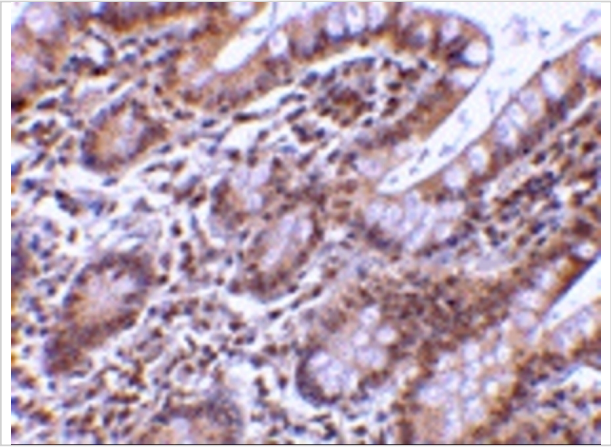
### Properties

Purification	Livin Antibody is affinity chromatography purified via peptide column.
Clonality	Polyclonal
Isotype	IgG
Physical State	Liquid
Buffer	Livin Antibody is supplied in PBS containing 0.02% sodium azide.
Concentration	1 mg/ml
Storage Conditions	Livin antibody can be stored at 4°C for three months and -20°C, stable for up to one year. As with all antibodies care should be taken to avoid repeated freeze thaw cycles. Antibodies should not be exposed to prolonged high temperatures.



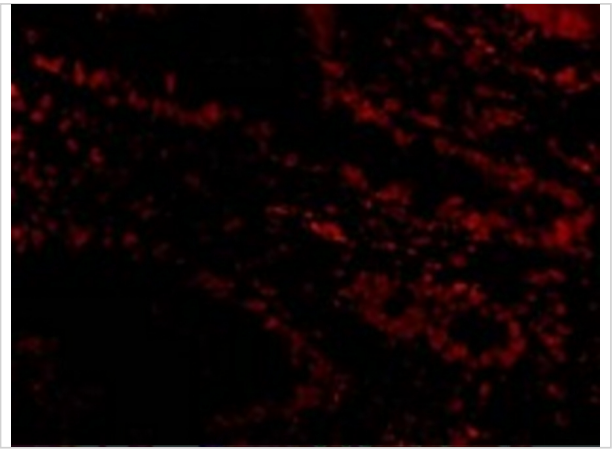
**Livin Antibody 1**

Western blot analysis of Livin expression in human Raji cell lysate with Livin antibody at 0.5 µg/mL.



**Livin Antibody 2**

Immunohistochemistry of Livin in human small intestine tissue with Livin antibody at 5 µg/mL.



**Livin Antibody 3**

Immunofluorescence of Livin in Human Small Intestine cells with Livin antibody at 20 µg/mL.

**Disclaimer**

<b>Disclaimer</b>	Optimal dilutions/concentrations should be determined by the end user. The information provided is a guideline for product use. This product is for research use only.
-------------------	--

For research use only. For additional information, visit ProSci's [Terms and Conditions Page](#).