

## CIKS Antibody

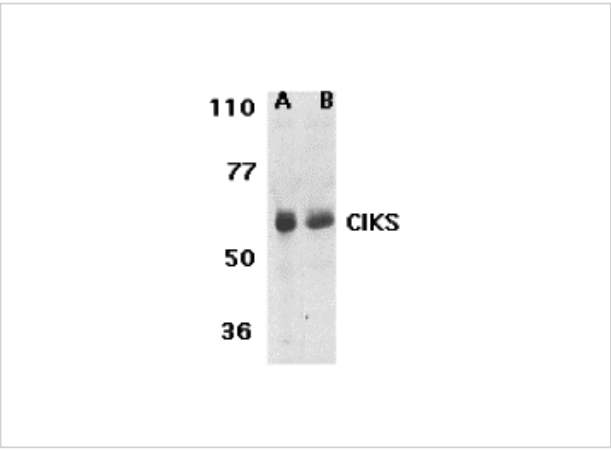
CATALOG NUMBER: 2501

### Specifications

Host Species	Rabbit
Species Reactivity	Human
Immunogen	CIKS antibody was raised against a 14 amino acid peptide near the amino terminus of human CIKS. The immunogen is located within the first 50 amino acids of CIKS.
Conjugate	Unconjugated
Tested Applications	ELISA, IF, IHC-P, WB
User Note	Optimal dilutions for each application to be determined by the researcher.
Predicted Molecular Weight	63 kDa

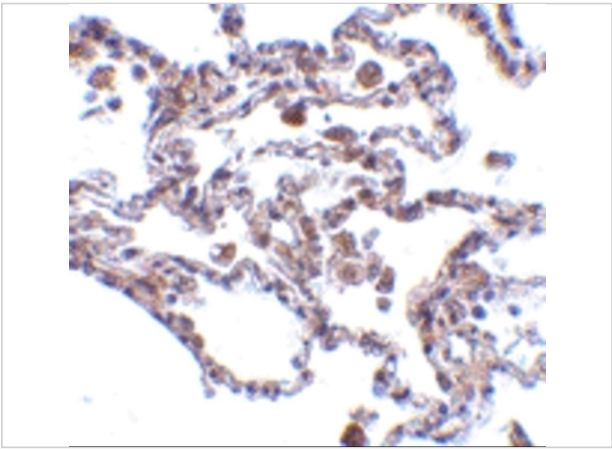
### Properties

Purification	CIKS Antibody is affinity chromatography purified via peptide column.
Clonality	Polyclonal
Isotype	IgG
Physical State	Liquid
Buffer	CIKS Antibody is supplied in PBS containing 0.02% sodium azide.
Concentration	1 mg/ml
Storage Conditions	CIKS antibody can be stored at 4°C for three months and -20°C, stable for up to one year. As with all antibodies care should be taken to avoid repeated freeze thaw cycles. Antibodies should not be exposed to prolonged high temperatures.



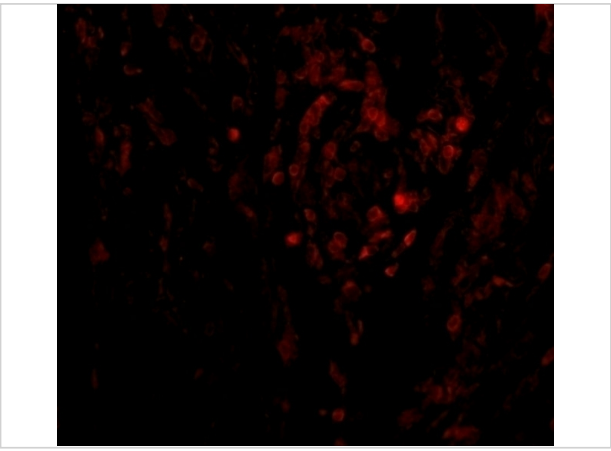
**CIKS Antibody 1**

Western blot analysis of CIKS expression in human lung (lane A) and placenta (lane B) tissue lysates with CIKS antibody at 1 µg/ml.



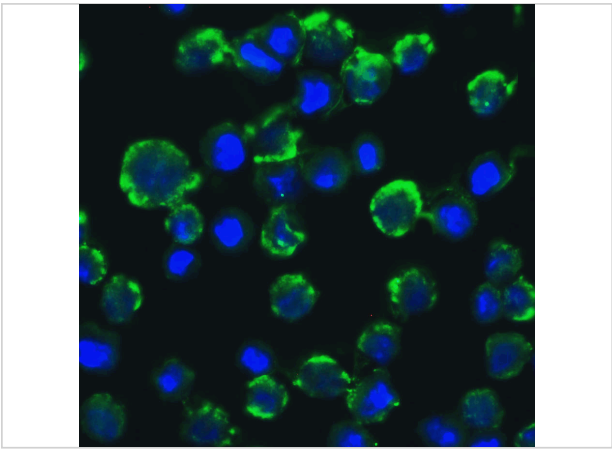
**CIKS Antibody 2**

Immunohistochemistry of CIKS in human lung tissue with CIKS antibody at 5 µg/mL.



**CIKS Antibody 3**

Immunofluorescence of CIKS in human lung tissue with CIKS antibody at 20 µg/mL.



**CIKS Antibody 4**

Immunofluorescence of CIKS in A549 cells with CIKS antibody at 20 µg/mL.

Green: CIKS Antibody (2501)  
Blue: DAPI staining

**Disclaimer**

<b>Disclaimer</b>	Optimal dilutions/concentrations should be determined by the end user. The information provided is a guideline for product use. This product is for research use only.
-------------------	--

For research use only. For additional information, visit ProSci's [Terms and Conditions Page](#).