

MTBP Antibody

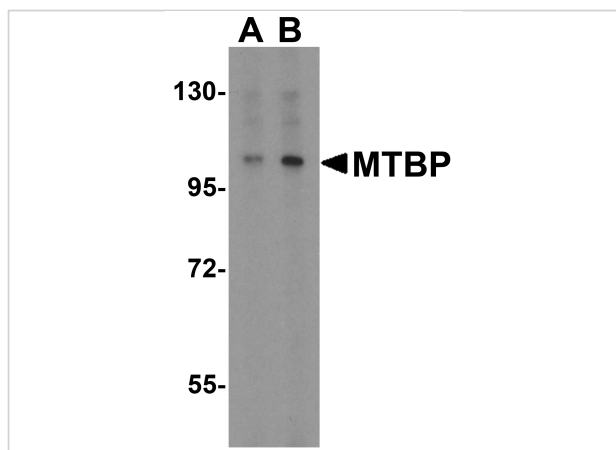
CATALOG NUMBER: 2447

Specifications

Host Species	Rabbit
Species Reactivity	Human
Homology	Predicted species reactivity based on immunogen sequence: Mouse: (94%)
Immunogen	MTBP antibody was raised against a 18 amino acid peptide near the center of human MTBP. The immunogen is located within amino acids 110 - 160 of MTBP.
Conjugate	Unconjugated
Tested Applications	ELISA, ICC, IF, WB
User Note	Optimal dilutions for each application to be determined by the researcher.
Predicted Molecular Weight	Predicted: 104 kDa Observed: 104 kDa

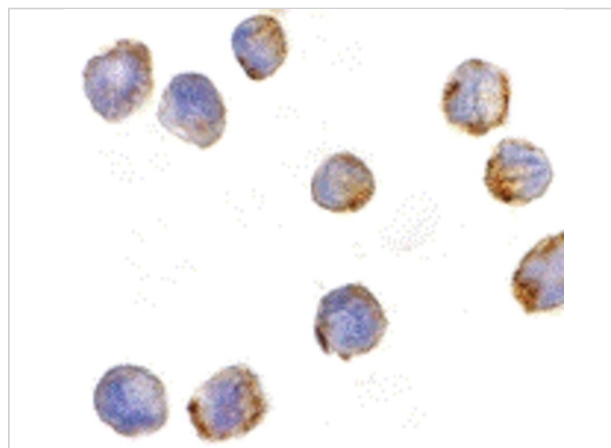
Properties

Purification	MTBP Antibody is affinity chromatography purified via peptide column.
Clonality	Polyclonal
Isotype	IgG
Physical State	Liquid
Buffer	MTBP Antibody is supplied in PBS containing 0.02% sodium azide.
Concentration	1 mg/ml
Storage Conditions	MTBP antibody can be stored at 4°C for three months and -20°C, stable for up to one year. As with all antibodies care should be taken to avoid repeated freeze thaw cycles. Antibodies should not be exposed to prolonged high temperatures.



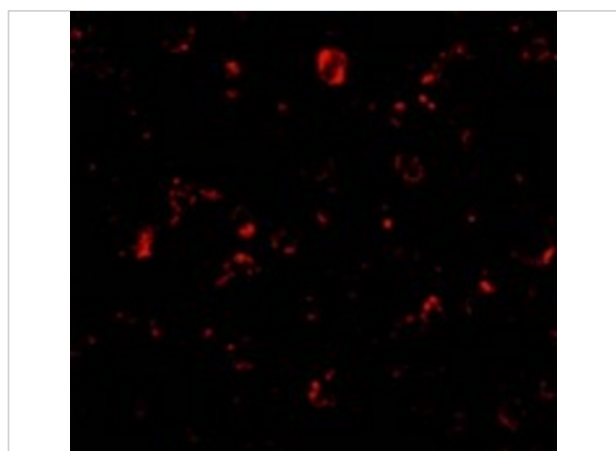
MTBP Antibody 1

Western blot analysis of MTBP expression in K562 cell lysate with MTBP antibody at (A) 1 and (B) 2 $\mu\text{g/mL}$.



MTBP Antibody 2

Immunocytochemistry of MTBP in K562 cells with MTBP antibody at 5 $\mu\text{g/mL}$.



MTBP Antibody 3

Immunofluorescence of MTBP in K562 cells with MTBP antibody at 20 $\mu\text{g/mL}$.

Disclaimer

Disclaimer

Optimal dilutions/concentrations should be determined by the end user. The information provided is a guideline for product use. This product is for research use only.

For research use only. For additional information, visit ProSci's [Terms and Conditions Page](#).