



ProSci Incorporated
12170 Flint Place
Poway, CA 92064, USA
prosci-inc.com

P: +1 (888) 513-9525
Local: +1 (858) 513-2638
Fax: +1 (858) 513-2692

customercare@prosci-inc.com
techsupport@prosci-inc.com

Aven Antibody

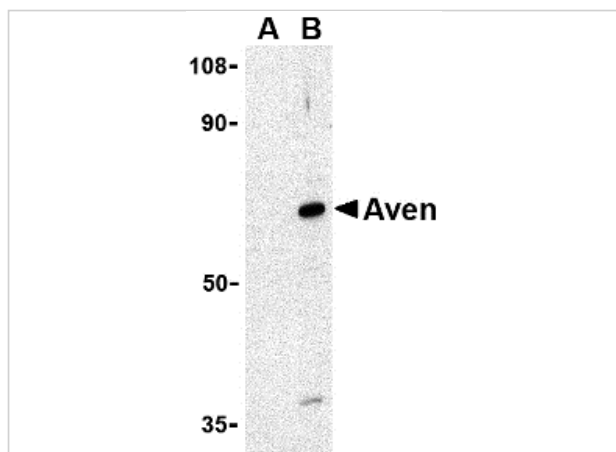
CATALOG NUMBER: 2417

Specifications

Host Species	Rabbit
Species Reactivity	Human, Mouse, Rat
Immunogen	Aven antibody was raised against a 18 amino acid synthetic peptide from near the amino terminus of human Aven. The immunogen is located within the first 50 amino acids of Aven.
Conjugate	Unconjugated
Tested Applications	ELISA, IF, IHC-P, WB
User Note	Optimal dilutions for each application to be determined by the researcher.

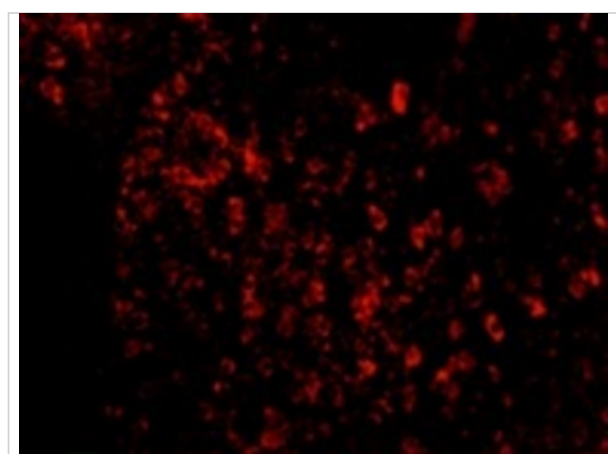
Properties

Purification	Aven Antibody is affinity chromatography purified via peptide column.
Clonality	Polyclonal
Isotype	IgG
Physical State	Liquid
Buffer	Aven Antibody is supplied in PBS containing 0.02% sodium azide.
Concentration	1 mg/ml
Storage Conditions	Aven antibody can be stored at 4°C for three months and -20°C, stable for up to one year. As with all antibodies care should be taken to avoid repeated freeze thaw cycles. Antibodies should not be exposed to prolonged high temperatures.



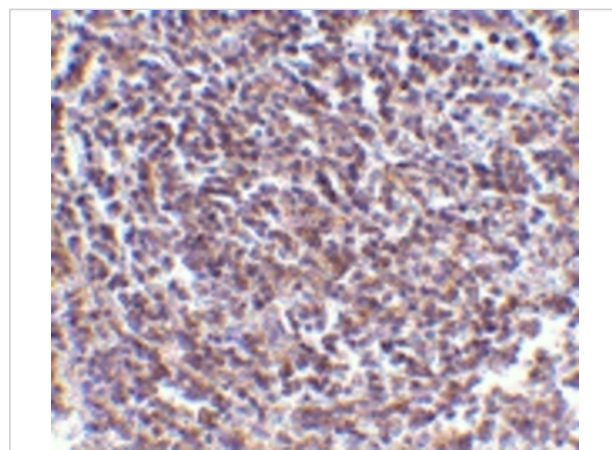
Aven Antibody 1

Western blot analysis of Aven in Raji cell lysate with Aven antibody at 1 $\mu\text{g/mL}$ in (A) the presence and (B) the absence of blocking peptide.



Aven Antibody 3

Immunofluorescence of AVEN in Human Spleen cells with AVEN antibody at 20 $\mu\text{g/mL}$.



Aven Antibody 2

Immunohistochemistry of Aven in human spleen tissue with Aven antibody at 5 $\mu\text{g/mL}$.

Disclaimer

Disclaimer

Optimal dilutions/concentrations should be determined by the end user. The information provided is a guideline for product use. This product is for research use only.

For research use only. For additional information, visit ProSci's [Terms and Conditions Page](#).