

APRIL Antibody

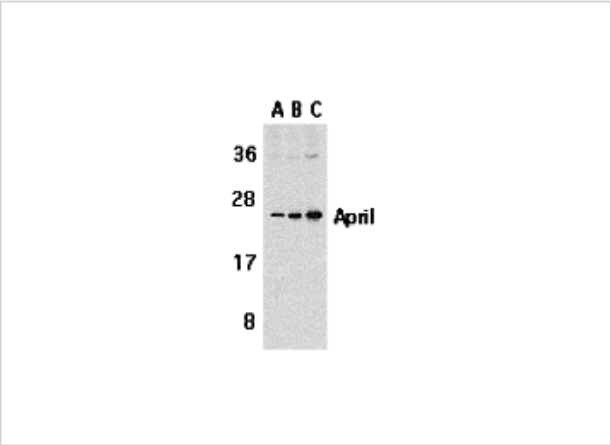
CATALOG NUMBER: 2415

Specifications

Host Species	Rabbit
Species Reactivity	Human, Mouse
Immunogen	APRIL antibody was raised against a synthetic peptide corresponding to amino acids within a extracellular domain of human APRIL. The immunogen is located within amino acids 180 - 230 of APRIL.
Conjugate	Unconjugated
Tested Applications	ELISA, IHC-P, WB
User Note	Optimal dilutions for each application to be determined by the researcher.
Predicted Molecular Weight	Predicted: 27 kDa Observed: 27 kDa

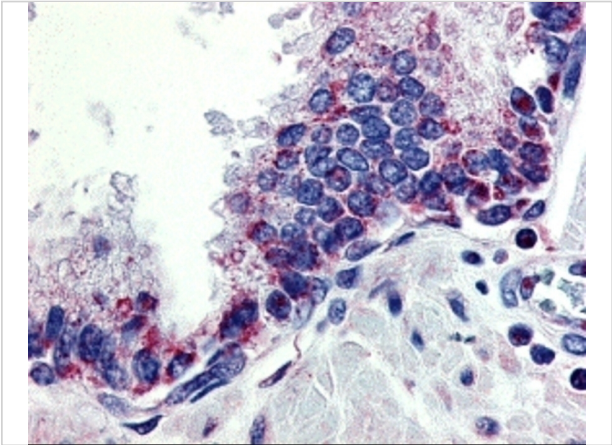
Properties

Purification	APRIL Antibody is affinity chromatography purified via peptide column.
Clonality	Polyclonal
Isotype	IgG
Physical State	Liquid
Buffer	APRIL Antibody is supplied in PBS containing 0.02% sodium azide.
Concentration	1 mg/mL
Storage Conditions	APRIL antibody can be stored at 4°C for three months and -20°C, stable for up to one year. As with all antibodies care should be taken to avoid repeated freeze thaw cycles. Antibodies should not be exposed to prolonged high temperatures.



APRIL Antibody 1

Western blot analysis of APRIL expression in Jurkat cells with APRIL antibody at 1 µg/mL (A), 2 µg/mL (B), and 4 µg/mL (C).



APRIL Antibody 2

Immunohistochemistry of APRIL in human prostate tissue with APRIL antibody at 10 µg/mL.

Disclaimer

Disclaimer	Optimal dilutions/concentrations should be determined by the end user. The information provided is a guideline for product use. This product is for research use only.
------------	--

For research use only. For additional information, visit ProSci's [Terms and Conditions Page](#).