

TACI Antibody

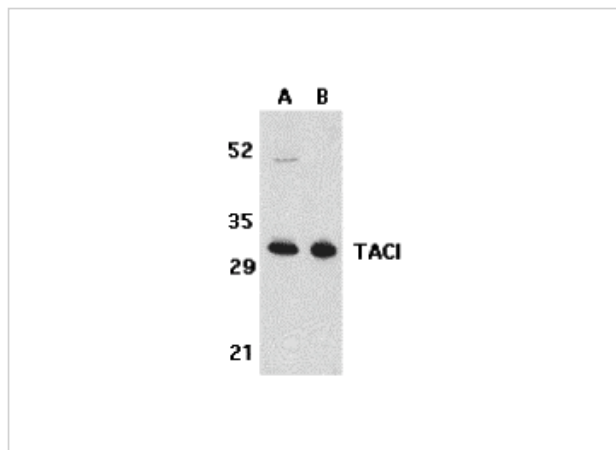
CATALOG NUMBER: 2395

Specifications

Host Species	Rabbit
Species Reactivity	Human
Immunogen	TACI antibody was raised against a synthetic peptide mapping at the amino terminus of human TACI. The immunogen is located within the first 50 amino acids of TACI.
Conjugate	Unconjugated
Tested Applications	ELISA, ICC, WB
User Note	Optimal dilutions for each application to be determined by the researcher.

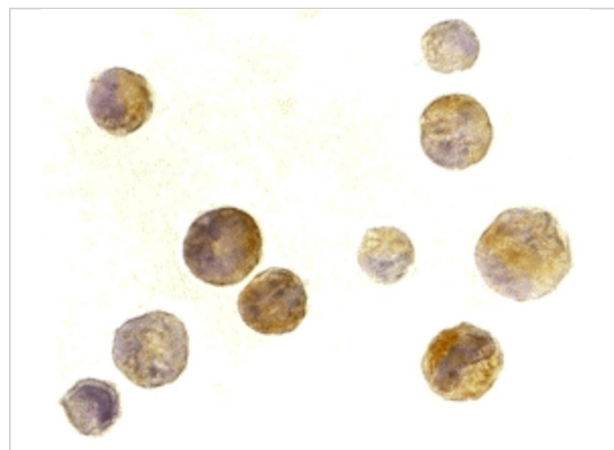
Properties

Purification	TACI Antibody is affinity chromatography purified via peptide column.
Clonality	Polyclonal
Isotype	IgG
Physical State	Liquid
Buffer	TACI Antibody is supplied in PBS containing 0.02% sodium azide.
Concentration	1 mg/ml
Storage Conditions	TACI antibody can be stored at 4°C for three months and -20°C, stable for up to one year. As with all antibodies care should be taken to avoid repeated freeze thaw cycles. Antibodies should not be exposed to prolonged high temperatures.



TACI Antibody 1

Western blot analysis of TACI in K562 (A) and U937 (B) cell lysates with TACI antibody at 5 µg/mL.



TACI Antibody 2

Immunocytochemistry of TACI in K562 cells with TACI antibody at 2 µg/mL.

Disclaimer

Disclaimer

Optimal dilutions/concentrations should be determined by the end user. The information provided is a guideline for product use. This product is for research use only.

For research use only. For additional information, visit ProSci's [Terms and Conditions Page](#).