

## Caspase-12 Antibody

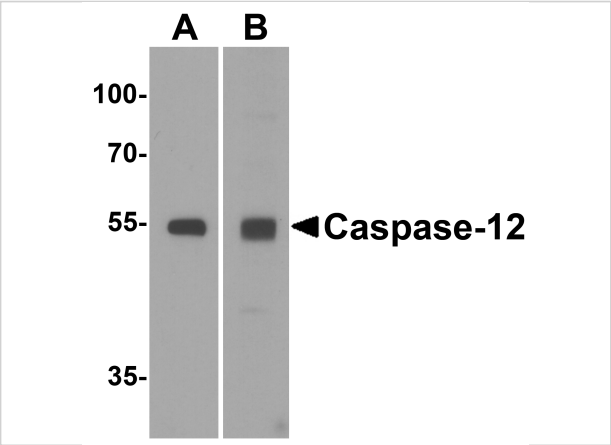
CATALOG NUMBER: 2327

### Specifications

Host Species	Rabbit
Species Reactivity	Human, Mouse, Rat
Immunogen	Caspase-12 antibody was raised against a 17 amino acid peptide near the center of murine Caspase-12. The immunogen is located within amino acids 90 - 140 of Caspase-12.
Conjugate	Unconjugated
Tested Applications	ELISA, IF, IHC-P, WB
User Note	Optimal dilutions for each application to be determined by the researcher.
Predicted Molecular Weight	Predicted: 46 kDa Observed: 55 kDa

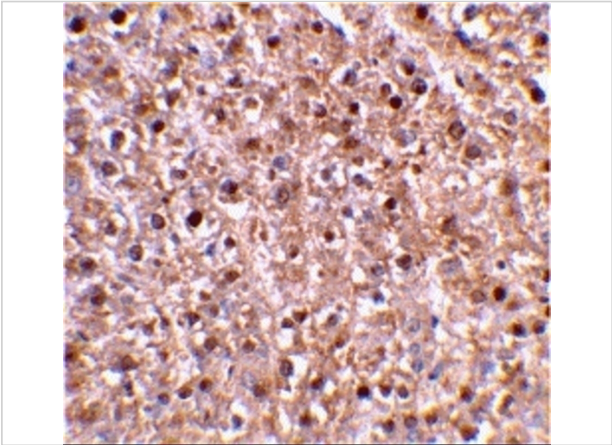
### Properties

Purification	Caspase-12 Antibody is affinity chromatography purified via peptide column.
Clonality	Polyclonal
Isotype	IgG
Physical State	Liquid
Buffer	Caspase-12 Antibody is supplied in PBS containing 0.02% sodium azide.
Concentration	1 mg/mL
Storage Conditions	Caspase-12 antibody can be stored at 4°C for three months and -20°C, stable for up to one year. As with all antibodies care should be taken to avoid repeated freeze thaw cycles. Antibodies should not be exposed to prolonged high temperatures.



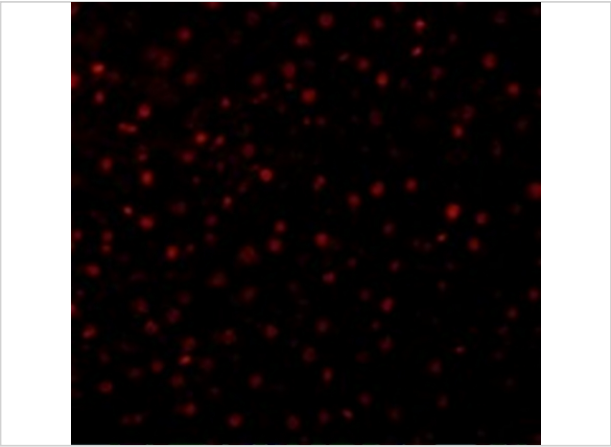
Caspase-12 Antibody 1

Western blot analysis of Caspase-12 in (A) human spleen and (B) mouse spleen tissue lysate with Caspase-12 antibody at 1 µg/mL.



Caspase-12 Antibody 2

Immunohistochemical staining of mouse liver tissue using caspase-12 antibody at 2 µg/mL.



Caspase-12 Antibody 3

Immunofluorescence of Caspase-12 in Mouse Liver cells with Caspase-12 antibody at 10 µg/mL.

Disclaimer

Disclaimer	Optimal dilutions/concentrations should be determined by the end user. The information provided is a guideline for product use. This product is for research use only.
------------	--

For research use only. For additional information, visit ProSci's [Terms and Conditions Page](#).