

CIDE-B Antibody

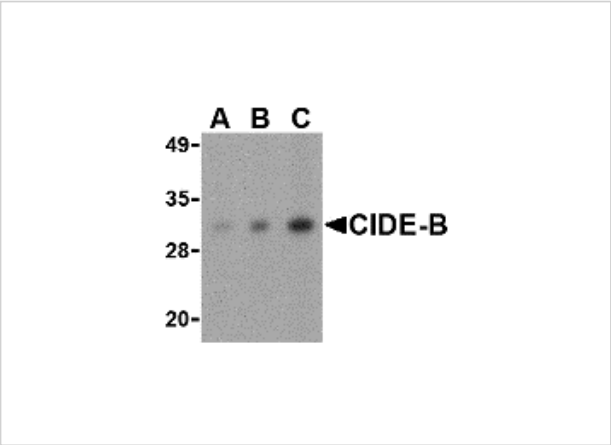
CATALOG NUMBER: 2321

Specifications

Host Species	Rabbit
Species Reactivity	Human, Mouse, Rat
Homology	Predicted species reactivity based on immunogen sequence: Bovine: (86%)
Immunogen	CIDE-B antibody was raised against a peptide corresponding to 14 amino acids near the center of human CIDE-B. The immunogen is located within amino acids 100 - 150 of CIDE-B.
Conjugate	Unconjugated
Tested Applications	ELISA, IF, IHC-P, WB
User Note	Optimal dilutions for each application to be determined by the researcher.
Specificity	CIDE-B antibody has no cross activity to CIDE-A.

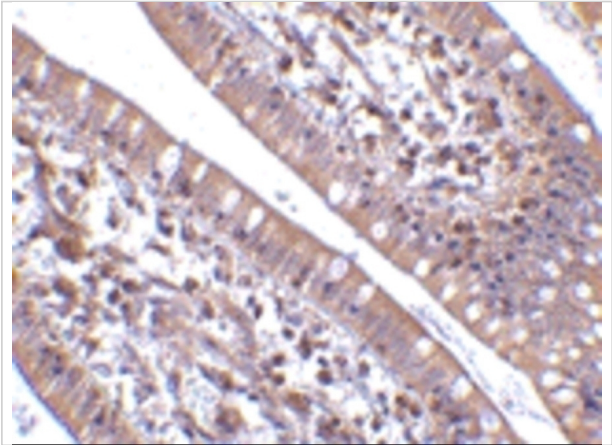
Properties

Purification	CIDE-B Antibody is affinity chromatography purified via peptide column.
Clonality	Polyclonal
Isotype	IgG
Physical State	Liquid
Buffer	CIDE-B Antibody is supplied in PBS containing 0.02% sodium azide.
Concentration	1 mg/ml
Storage Conditions	CIDE-B antibody can be stored at 4°C for three months and -20°C, stable for up to one year. As with all antibodies care should be taken to avoid repeated freeze thaw cycles. Antibodies should not be exposed to prolonged high temperatures.



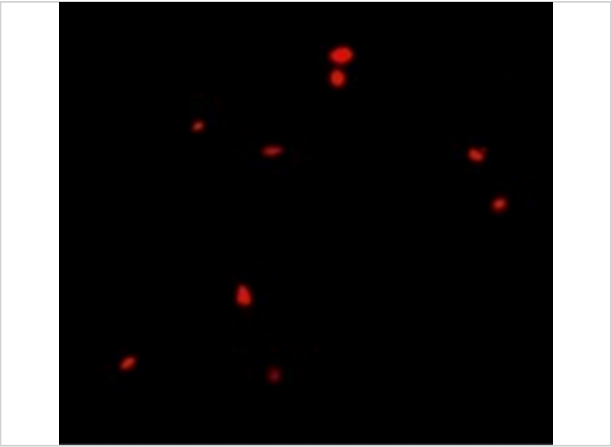
CIDE-B Antibody 1

Western blot analysis of CIDE-B in mouse small intestine tissue lysate with CIDE-B antibody at (A) 0.5, (B) 1 and (C) 2 µg/mL.



CIDE-B Antibody 2

Immunohistochemistry of CIDE-B in human small intestine tissue with CIDE-B antibody at 5 µg/mL.



CIDE-B Antibody 3

Immunofluorescence of CIDE-B in Human Small Intestine cells with CIDE-B antibody at 20 µg/mL.

Disclaimer

Disclaimer	Optimal dilutions/concentrations should be determined by the end user. The information provided is a guideline for product use. This product is for research use only.
------------	--

For research use only. For additional information, visit ProSci's [Terms and Conditions Page](#).