

## Survivin Antibody

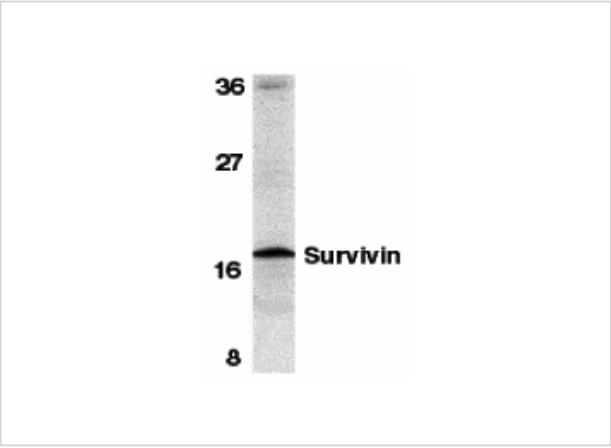
CATALOG NUMBER: 2237

### Specifications

Host Species	Rabbit
Species Reactivity	Mouse
Homology	Predicted species reactivity based on immunogen sequence: Rat: (83%)
Immunogen	Survivin antibody was raised against a synthetic peptide corresponding to amino acids near the carboxy terminus of mouse Survivin. The immunogen is located within the last 50 amino acids of Survivin.
Conjugate	Unconjugated
Tested Applications	ELISA, IHC-P, WB
User Note	Optimal dilutions for each application to be determined by the researcher.
Predicted Molecular Weight	17 kDa

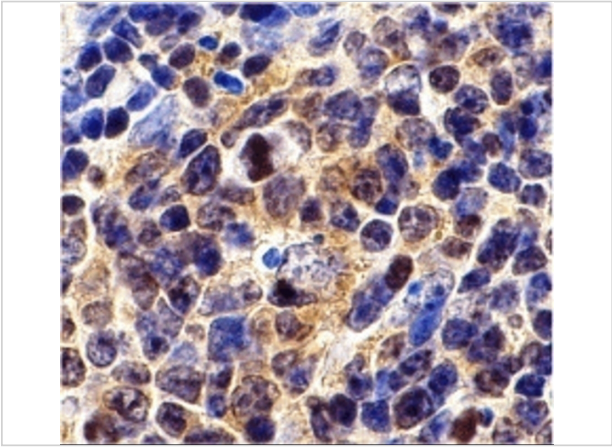
### Properties

Purification	Survivin Antibody is affinity chromatography purified via peptide column.
Clonality	Polyclonal
Isotype	IgG
Physical State	Liquid
Buffer	Survivin Antibody is supplied in PBS containing 0.02% sodium azide.
Concentration	1 mg/ml
Storage Conditions	mSurvivin antibody can be stored at 4°C for three months and -20°C, stable for up to one year. As with all antibodies care should be taken to avoid repeated freeze thaw cycles. Antibodies should not be exposed to prolonged high temperatures.



Survivin Antibody 1

Western blot analysis of survivin in mouse spleen tissue lysate with survivin antibody at 1 µg/mL.



Survivin Antibody 2

Immunohistochemistry of Survivin in mouse spleen cells with Survivin antibody at 10 µg/mL.

Disclaimer

Disclaimer	Optimal dilutions/concentrations should be determined by the end user. The information provided is a guideline for product use. This product is for research use only.
------------	--

For research use only. For additional information, visit ProSci's [Terms and Conditions Page](#).