

## DR6 Antibody

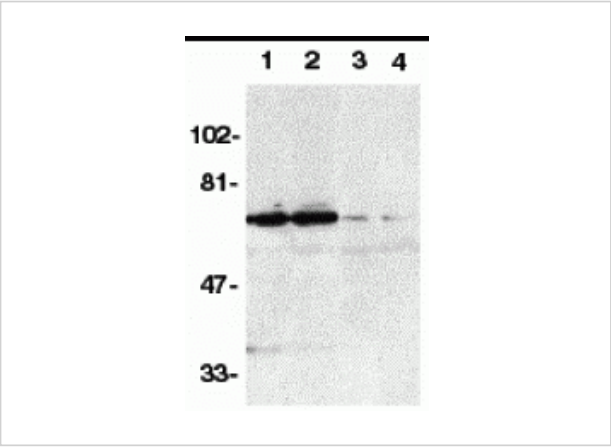
CATALOG NUMBER: 2157

### Specifications

Host Species	Rabbit
Species Reactivity	Human
Homology	Predicted species reactivity based on immunogen sequence: Rat: (73%), Mouse: (73%)
Immunogen	DR6 antibody was raised against a 15 amino acid peptide near the amino terminus of human DR6. The immunogen is located within amino acids 30 - 80 of DR6.
Conjugate	Unconjugated
Tested Applications	ELISA, WB
User Note	Optimal dilutions for each application to be determined by the researcher.
Predicted Molecular Weight	68 kDa

### Properties

Purification	DR6 Antibody is Antibody is DEAE purified.
Clonality	Polyclonal
Isotype	IgG
Physical State	Liquid
Buffer	DR6 Antibody is supplied in PBS containing 0.02% sodium azide.
Concentration	1 mg/ml
Storage Conditions	DR6 antibody can be stored at 4°C for three months and -20°C, stable for up to one year. As with all antibodies care should be taken to avoid repeated freeze thaw cycles. Antibodies should not be exposed to prolonged high temperatures.



DR6 Antibody 1

Western blot analysis of DR6 in K562 (1,3) and Raji (2,4) whole cell lysate in the absence (1,2) or presence (3,4) of blocking peptide (Catalog no. 2157P) with DR6 antibody at 1:500 dilution.

Disclaimer

Disclaimer	Optimal dilutions/concentrations should be determined by the end user. The information provided is a guideline for product use. This product is for research use only.
------------	--

For research use only. For additional information, visit ProSci's [Terms and Conditions Page](#).