

FLASH Antibody

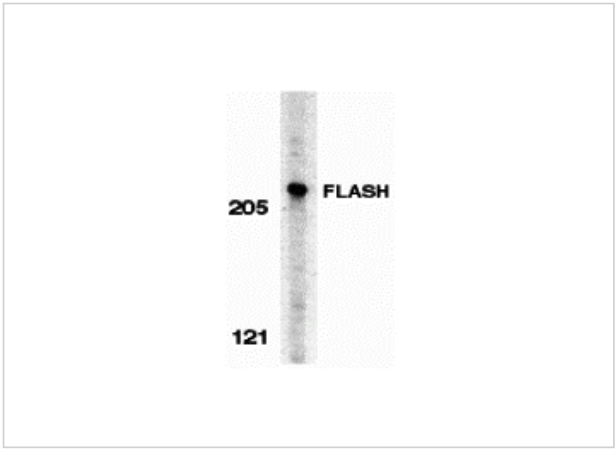
CATALOG NUMBER: 2271

Specifications

Host Species	Rabbit
Species Reactivity	Human
Homology	Predicted species reactivity based on immunogen sequence: Mouse: (94%)
Immunogen	FLASH antibody was raised against a synthetic peptide corresponding to amino acids near the carboxy terminus of human FLASH which differ from those of mouse by one amino acid. The immunogen is located within the last 50 amino acids of FLASH.
Conjugate	Unconjugated
Tested Applications	ELISA, ICC, IF, WB
User Note	Optimal dilutions for each application to be determined by the researcher.
Predicted Molecular Weight	220 kDa

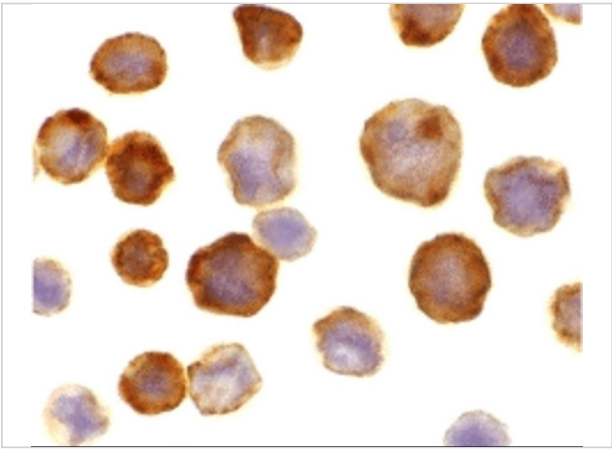
Properties

Purification	FLASH Antibody is affinity chromatography purified via peptide column.
Clonality	Polyclonal
Isotype	IgG
Physical State	Liquid
Buffer	FLASH Antibody is supplied in PBS containing 0.02% sodium azide.
Concentration	1 mg/ml
Storage Conditions	FLASH antibody can be stored at 4°C for three months and -20°C, stable for up to one year. As with all antibodies care should be taken to avoid repeated freeze thaw cycles. Antibodies should not be exposed to prolonged high temperatures.



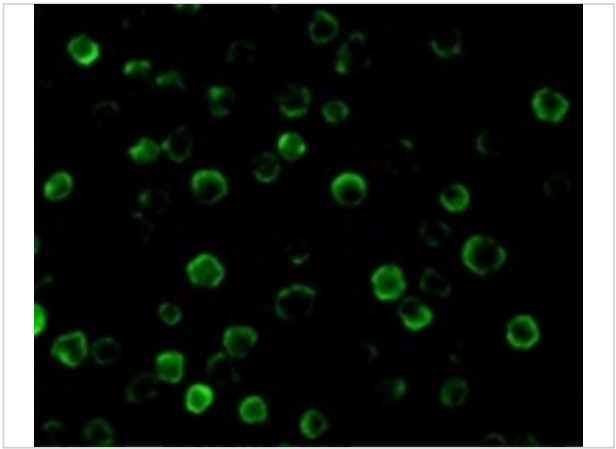
FLASH Antibody 1

Western blot analysis of FLASH in HeLa whole cell lysate with FLASH antibody at 0.5 µg/mL.



FLASH Antibody 2

Immunocytochemistry of FLASH in HeLa cells with FLASH antibody at 10 µg/mL.



FLASH Antibody 3

Immunofluorescence of FLASH in HeLa cells with FLASH antibody at 10 µg/mL.

Disclaimer

Disclaimer	Optimal dilutions/concentrations should be determined by the end user. The information provided is a guideline for product use. This product is for research use only.
------------	--

For research use only. For additional information, visit ProSci's [Terms and Conditions Page](#).