

IKK beta Antibody

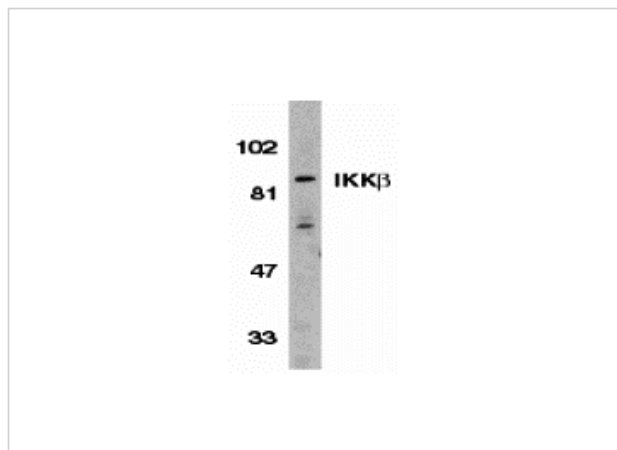
CATALOG NUMBER: 2121

Specifications

Host Species	Rabbit
Species Reactivity	Human
Homology	Predicted species reactivity based on immunogen sequence: Bovine: (100%), Rat: (95%), Mouse: (95%)
Immunogen	IKK beta antibody was raised against a peptide corresponding to amino acids near the carboxy terminus of human IKK beta (Genbank accession NoO14920), which differs from corresponding murine sequence by one amino acid. The immunogen is located within amino acids 650 - 700 of IKK beta.
Conjugate	Unconjugated
Tested Applications	ELISA, ICC, IF, WB
User Note	Optimal dilutions for each application to be determined by the researcher.
Specificity	This polyclonal antibody has no cross response to IKKa or IKKy.
Predicted Molecular Weight	87 kDa

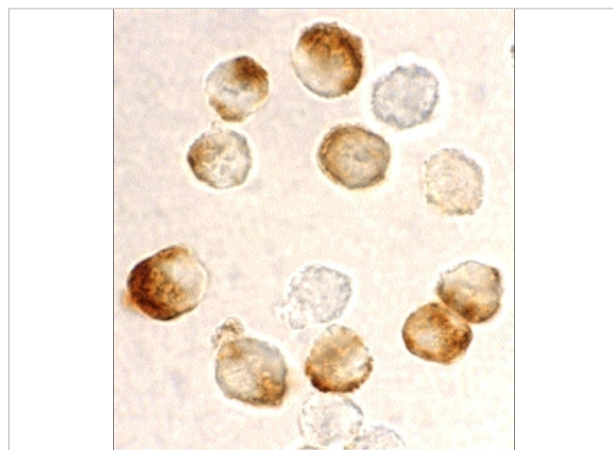
Properties

Purification	IKK beta Antibody is affinity chromatography purified via peptide column.
Clonality	Polyclonal
Isotype	IgG
Physical State	Liquid
Buffer	IKK beta Antibody is supplied in PBS containing 0.02% sodium azide.
Concentration	1 mg/ml
Storage Conditions	IKK beta antibody can be stored at 4°C for three months and -20°C, stable for up to one year. As with all antibodies care should be taken to avoid repeated freeze thaw cycles. Antibodies should not be exposed to prolonged high temperatures.



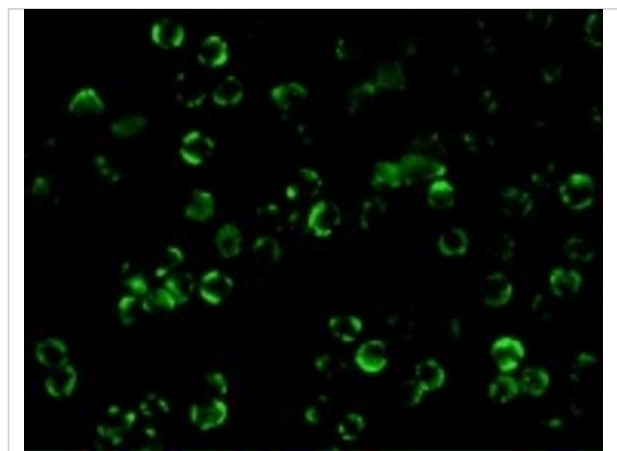
IKK beta Antibody 1

Western blot analysis of IKK beta in Jurkat whole cell lysate with IKK beta antibody (C3) at 1:500 dilution.



IKK beta Antibody 2

Immunocytochemistry staining of HeLa cells using IKK beta antibody at 10 µg/mL.



IKK beta Antibody 3

Immunofluorescence of IKK beta in HeLa cells with IKK beta antibody at 10 µg/mL.

Disclaimer

Disclaimer

Optimal dilutions/concentrations should be determined by the end user. The information provided is a guideline for product use. This product is for research use only.

For research use only. For additional information, visit ProSci's [Terms and Conditions Page](#).