

ADAM10 Antibody

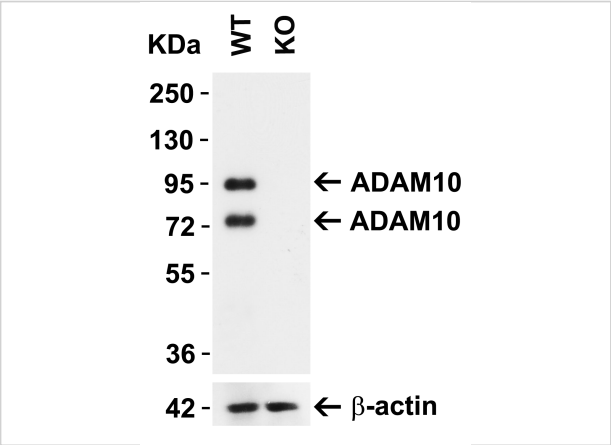
CATALOG NUMBER: 2051

Specifications

Host Species	Rabbit
Species Reactivity	Human, Mouse, Rat
Homology	Predicted species reactivity based on immunogen sequence: Bovine: (100%).
Immunogen	Anti-ADAM10 antibody (2051) was raised against a peptide corresponding to 17 amino acids near the carboxy terminus of human ADAM10. The immunogen is located within the last 50 amino acids of ADAM10.
Conjugate	Unconjugated
Tested Applications	ELISA, IF, WB
User Note	Optimal dilutions for each application to be determined by the researcher.
Predicted Molecular Weight	Predicted: 84kD Observed: 94 kD (precursor) and 68kD (mature form)

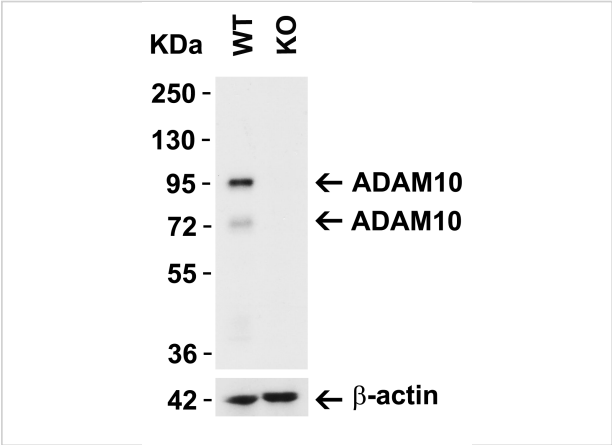
Properties

Purification	ADAM10 Antibody is affinity chromatography purified via peptide column.
Clonality	Polyclonal
Isotype	IgG
Physical State	Liquid
Buffer	ADAM10 Antibody is supplied in PBS containing 0.02% sodium azide.
Concentration	1 mg/mL
Storage Conditions	ADAM10 antibody can be stored at 4°C for three months and -20°C, stable for up to one year. As with all antibodies care should be taken to avoid repeated freeze thaw cycles. Antibodies should not be exposed to prolonged high temperatures.



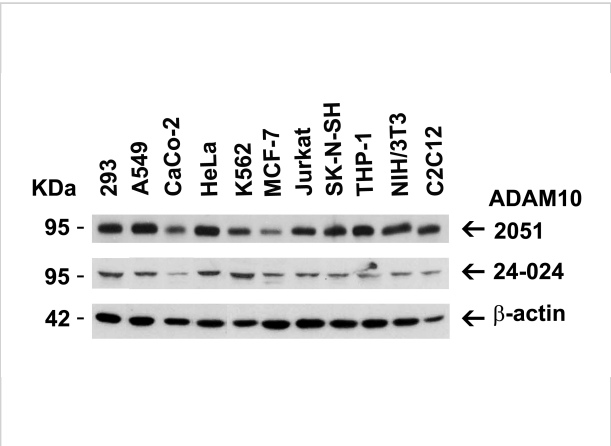
ADAM10 Antibody 1

Figure 1 ADAM10 KO Validation in MEF Cells
Loading: 10 μ g of lysate Antibodies: ADAM10 2051, 1 μ g/mL and beta-actin 3779-1301, 1 μ g/mL, 1 h incubation at RT in 5% NFDm/TBST. S...



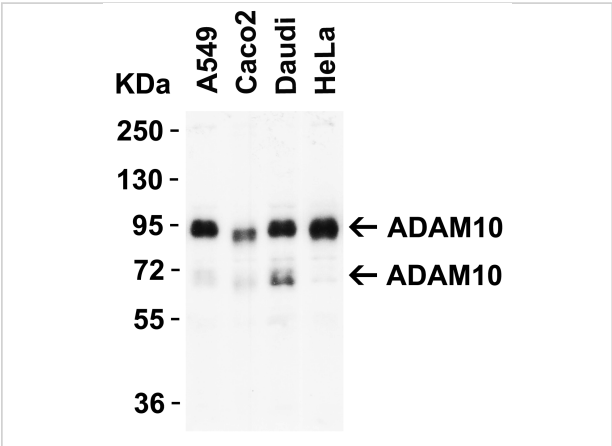
ADAM10 Antibody 2

Figure 2 ADAM10 KO Validation in 293 Cells
Loading: 15 μ g of lysate Antibodies: ADAM10 2051, 2 μ g/mL and beta-actin 3779-1301, 1 μ g/mL, 1 h incubation at RT in 5% NFDm/TBST. S...



ADAM10 Antibody 3

Figure 3 Independent Antibody Validation (IAV) via Protein Expression Profile in Human and Mouse Cell Lines
Loading: 15 μ g of lysates per lane. Antibodies: ADAM10 2051, 0.5 μ g/mL...



ADAM10 Antibody 4

Figure 4 WB Validation in Human Cell Lines
Loading: 15 μ g of lysate Antibodies: ADAM10 2051, 1 μ g/mL, 1 h incubation at RT in 5% NFDm/TBST. Secondary: Goat Anti-Rabbit IgG HR...

Disclaimer

Disclaimer	Optimal dilutions/concentrations should be determined by the end user. The information provided is a guideline for product use. This product is for research use only.
------------	--

For research use only. For additional information, visit ProSci's [Terms and Conditions Page](#).