

## Caspase-13 Antibody

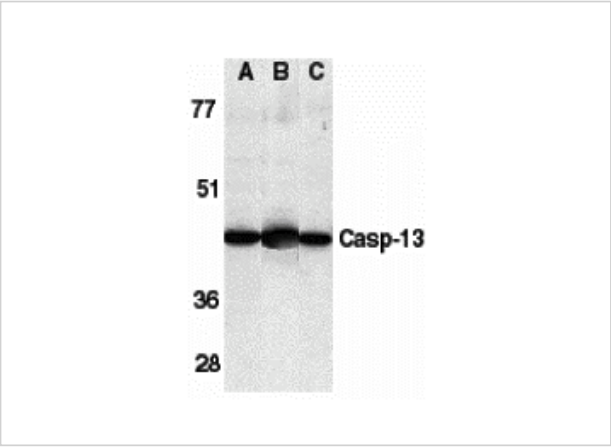
CATALOG NUMBER: 2245

### Specifications

Host Species	Rabbit
Species Reactivity	Human, Mouse, Rat
Homology	Predicted species reactivity based on immunogen sequence: Bovine: (100%)
Immunogen	Caspase-13 antibody was raised against a 15 amino acid peptide near the amino terminus of bovine Caspase-13. The immunogen is located within amino acids 80 - 130 of Caspase-13.
Conjugate	Unconjugated
Tested Applications	ELISA, IHC-P, WB
User Note	Optimal dilutions for each application to be determined by the researcher.
Predicted Molecular Weight	43 kDa

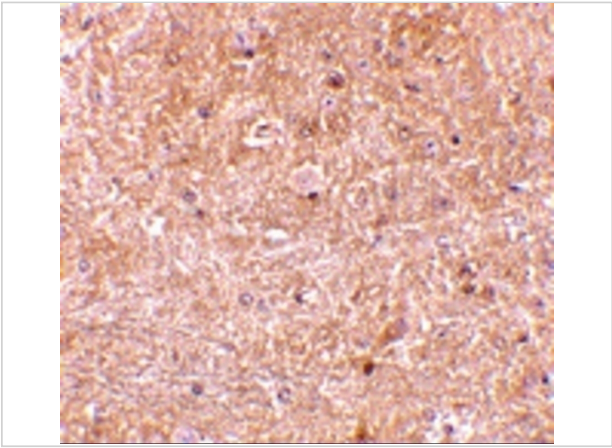
### Properties

Purification	Caspase-13 Antibody is Ion exchange chromatography purified.
Clonality	Polyclonal
Isotype	IgG
Physical State	Liquid
Buffer	Caspase-13 Antibody is supplied in PBS containing 0.02% sodium azide.
Concentration	1 mg/ml
Storage Conditions	Caspase-13 antibody can be stored at 4°C for three months and -20°C, stable for up to one year. As with all antibodies care should be taken to avoid repeated freeze thaw cycles. Antibodies should not be exposed to prolonged high temperatures.



Caspase-13 Antibody 1

Western blot analysis of caspase-13 in human HL60 cell lysate (A), mouse brain (B) and rat brain (C) tissue lysates with caspase-13 antibody at 1 µg/mL.



Caspase-13 Antibody 2

Immunohistochemistry of caspase-13 in mouse brain tissue with caspase-13 antibody at 10 µg/mL.

Disclaimer

Disclaimer	Optimal dilutions/concentrations should be determined by the end user. The information provided is a guideline for product use. This product is for research use only.
------------	--

For research use only. For additional information, visit ProSci's [Terms and Conditions Page](#).