

AIF Antibody

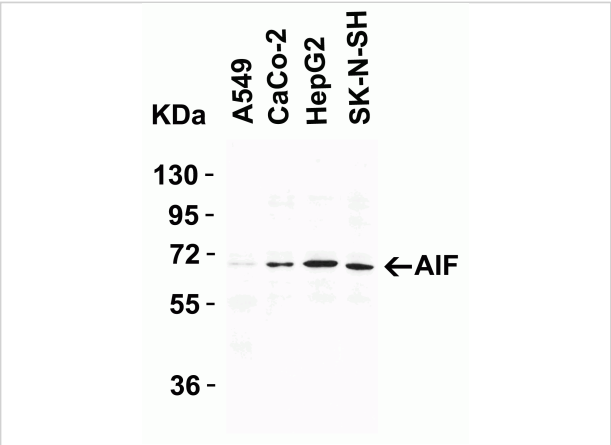
CATALOG NUMBER: 2239

Specifications

Host Species	Rabbit
Species Reactivity	Human
Homology	Predicted species reactivity based on immunogen sequence: Mouse: (50%), Rat: (50%)
Immunogen	Anti-AIF antibody (2239) was raised against a peptide corresponding to 14 amino acids near the amino terminus of mature human AIF. The immunogen is located within amino acids 90-140 of AIF.
Conjugate	Unconjugated
Tested Applications	ELISA, IF, WB
User Note	Optimal dilutions for each application to be determined by the researcher.
Specificity	Multiple isoforms of AIF are known to exist.
Predicted Molecular Weight	Predicted: 67 kDa Observed: 68 kDa

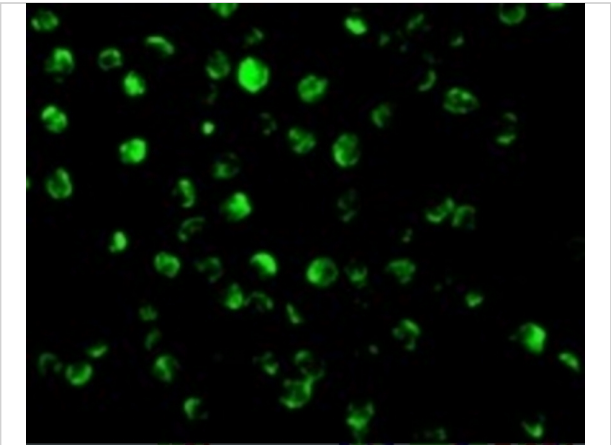
Properties

Purification	AIF Antibody is Ion exchange chromatography purified.
Clonality	Polyclonal
Isotype	IgG
Physical State	Liquid
Buffer	AIF Antibody is supplied in PBS containing 0.02% sodium azide.
Concentration	1 mg/ml
Storage Conditions	AIF antibody can be stored at 4°C for three months and -20°C, stable for up to one year. As with all antibodies care should be taken to avoid repeated freeze thaw cycles. Antibodies should not be exposed to prolonged high temperatures.



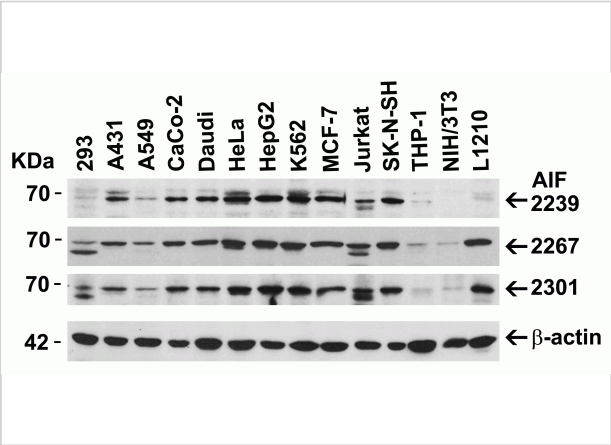
AIF Antibody 1

Figure 1 Western Blot Validation in Human Cell Lines
 Loading: 15 µg of lysates per lane. Antibodies: AIF 2239, (1 µg/mL),
 1h incubation at RT in 5% NFDm/TBST. Secondary: Goat anti...



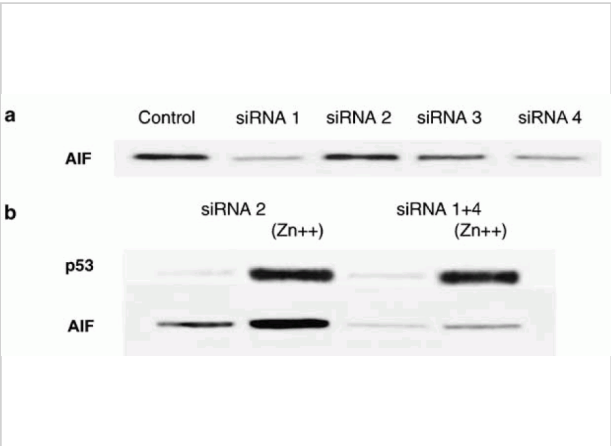
AIF Antibody 3

Figure 3 Immunofluorescence Validation of AIF in K562 Cells
 Immunofluorescent analysis of 4% paraformaldehyde-fixed K562
 Cells labeling AIF with 2239 at 20 µg/mL, followed by go...



AIF Antibody 2

Figure 2 Independent Antibody Validation (IAV) via Protein Expression Profile in Cell Lines
 Loading: 15 µg of lysates per lane. Antibodies: AIF 2267, (1 µg/mL),
 AIF 2239, (1 µg/mL)...



AIF Antibody 4

Figure 4 KD and Induced Validation of AIF in H1299 Cells(Stambolsky et al., 2006)
 Western blot analysis of AIF knockdown with anti-AIF antibodies
 in H1299 cells. AIF expressi...

Disclaimer

Disclaimer

Optimal dilutions/concentrations should be determined by the end user. The information provided is a guideline for product use. This product is for research use only.