

BAFF Antibody

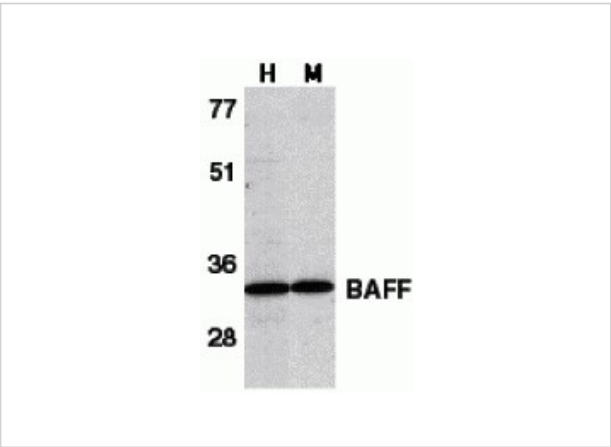
CATALOG NUMBER: 2221

Specifications

Host Species	Rabbit
Species Reactivity	Human, Mouse, Rat
Immunogen	Anti-BAFF antibody (2221) was raised against a peptide corresponding to 16 amino acids near the carboxy terminus of human BAFF. The immunogen is located within the last 50 amino acids of BAFF.
Conjugate	Unconjugated
Tested Applications	ELISA, ICC, IF, IHC, WB
User Note	Optimal dilutions for each application to be determined by the researcher.
Predicted Molecular Weight	Predicted: 31kD Observed: 35 kD

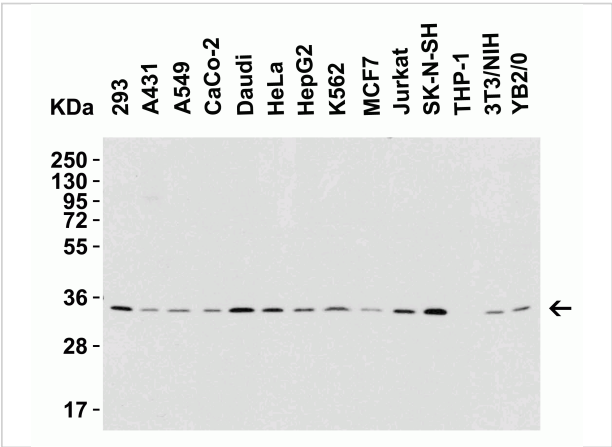
Properties

Purification	BAFF Antibody is Ion exchange chromatography purified.
Clonality	Polyclonal
Isotype	IgG
Physical State	Liquid
Buffer	BAFF Antibody is supplied in PBS containing 0.02% sodium azide.
Concentration	1 mg/mL
Storage Conditions	BAFF antibody can be stored at 4°C for three months and -20°C, stable for up to one year. As with all antibodies care should be taken to avoid repeated freeze thaw cycles. Antibodies should not be exposed to prolonged high temperatures.



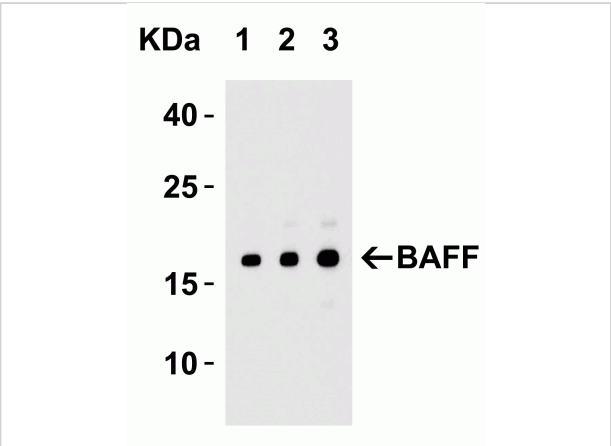
BAFF Antibody 1

Figure 1 Western Blot Validation in Human HL60 Cell Lysate (H) and Mouse Spleen Lysate (M)
 Loading: 15 µg of lysates per lane. Antibodies: BAFF 2221 (1 µg/mL), 1h incubation at...



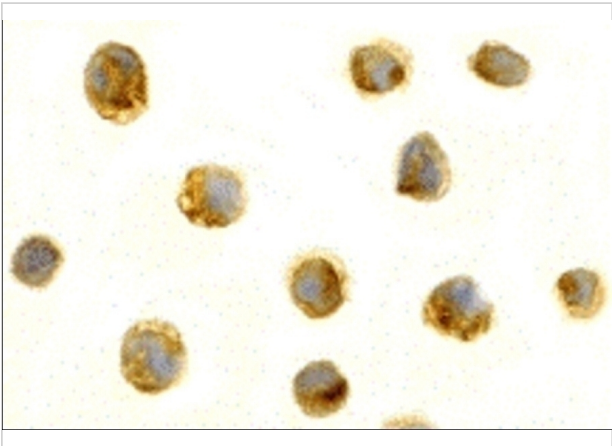
BAFF Antibody 2

Figure 2 Western Blot Validation in Human, Mouse and Rat Cell Lines
 Loading: 15 µg of lysates per lane. Antibodies: BAFF 2221 (1 µg/mL), 1h incubation at RT in 5% NFDm/TBST. Sec...



BAFF Antibody 3

Figure 3 Western Blot Validation with Recombinant Protein
 Loading: 30 ng of human BAFF recombinant protein per lane. Antibodies: BAFF 2221 (Lane 1: 0.25 µg/mL; Lane 2: 0.5 µg/mL ...



BAFF Antibody 4

Figure 4 Immunocytochemistry Validation of BAFF in HL60 Cells
 Immunocytochemical analysis of HL60 cells using anti-BAFF antibody (2221) at 1 µg/ml. Cells was fixed with formalde...

Disclaimer

Disclaimer

Optimal dilutions/concentrations should be determined by the end user. The information provided is a guideline for product use. This product is for research use only.

For research use only. For additional information, visit ProSci's [Terms and Conditions Page](#).