

## Acinus Antibody

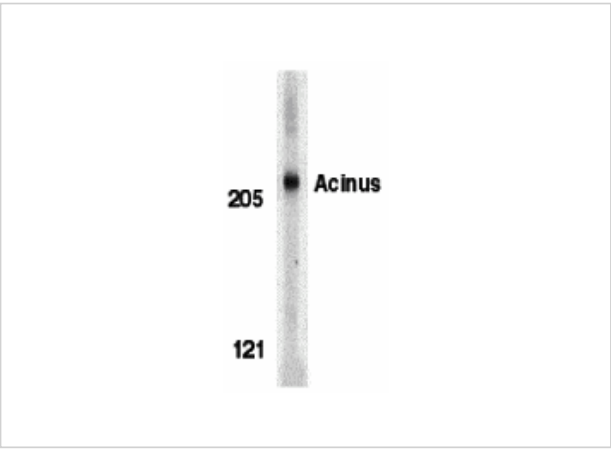
CATALOG NUMBER: 2219

### Specifications

Host Species	Rabbit
Species Reactivity	Human
Homology	Predicted species reactivity based on immunogen sequence: Mouse: (93%)
Immunogen	Acinus antibody was raised against a 35 amino acid peptide near the center of human Acinus. The immunogen is located within amino acids 760 - 810 of Acinus.
Conjugate	Unconjugated
Tested Applications	ELISA, ICC, IF, WB
User Note	Optimal dilutions for each application to be determined by the researcher.
Predicted Molecular Weight	220 kDa

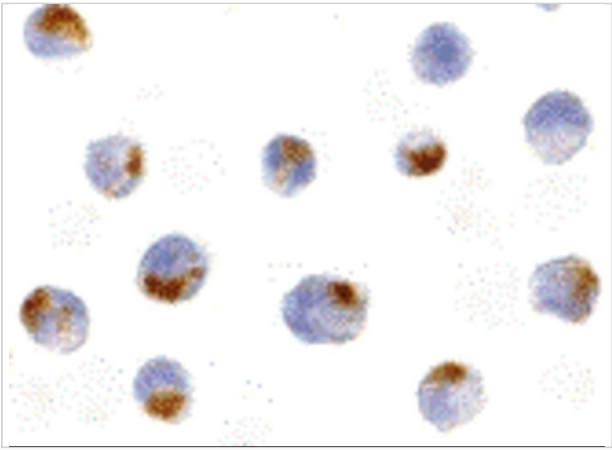
### Properties

Purification	Acinus Antibody is affinity chromatography purified via peptide column.
Clonality	Polyclonal
Isotype	IgG
Physical State	Liquid
Buffer	Acinus Antibody is supplied in PBS containing 0.02% sodium azide.
Concentration	1 mg/ml
Storage Conditions	Acinus antibody can be stored at 4°C for three months and -20°C, stable for up to one year. As with all antibodies care should be taken to avoid repeated freeze thaw cycles. Antibodies should not be exposed to prolonged high temperatures.



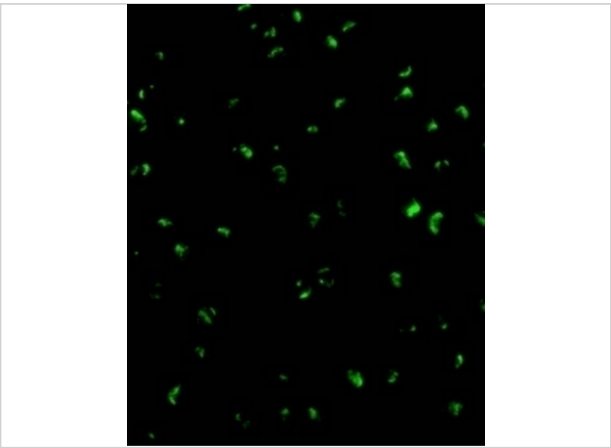
Acinus Antibody 1

Western blot analysis of Acinus in K562 whole cell lysate with Acinus antibody (IN) at 1 µg/mL.



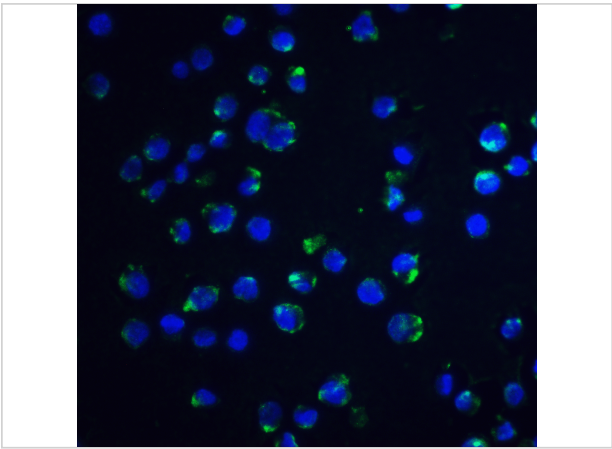
Acinus Antibody 2

Immunocytochemistry of Acinus in K562 cells with Acinus antibody at 5 µg/mL.



Acinus Antibody 3

Immunofluorescence of Acinus in K562 cells with Acinus antibody at 20 µg/mL.



Acinus Antibody 4

Immunofluorescence of Acinus in K562 cells with Acinus antibody at 20 µg/mL.

Green: Acinus Antibody (2219)  
Blue: DAPI staining

Disclaimer

Disclaimer	Optimal dilutions/concentrations should be determined by the end user. The information provided is a guideline for product use. This product is for research use only.
------------	--

For research use only. For additional information, visit ProSci's [Terms and Conditions Page](#).