

## DR3 Antibody

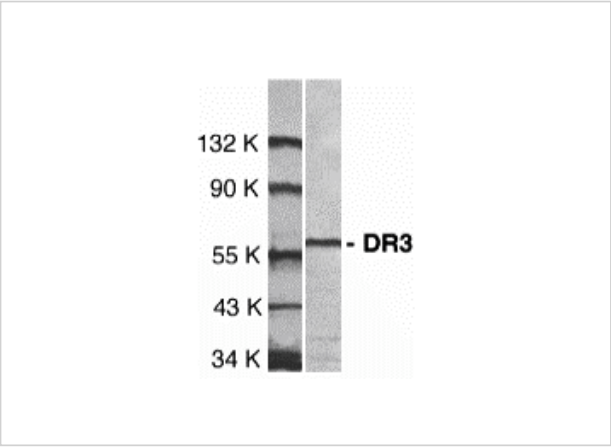
CATALOG NUMBER: 1158

### Specifications

Host Species	Rabbit
Species Reactivity	Human, Mouse
Immunogen	DR3 antibody was raised against a peptide corresponding to amino acids in extracellular domain of human DR3 precursor. The immunogen is located within amino acids 50 - 100 of DR3.
Conjugate	Unconjugated
Tested Applications	ELISA, ICC, IF, WB
User Note	Optimal dilutions for each application to be determined by the researcher.
Predicted Molecular Weight	59 kDa

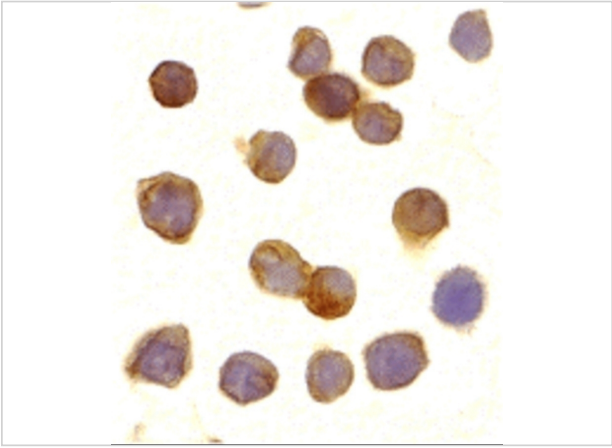
### Properties

Purification	DR3 Antibody is Antibody is DEAE purified.
Clonality	Polyclonal
Isotype	IgG
Physical State	Liquid
Buffer	DR3 Antibody is supplied in PBS containing 0.02% sodium azide.
Concentration	1 mg/ml
Storage Conditions	DR3 antibody can be stored at 4°C for three months and -20°C, stable for up to one year. As with all antibodies care should be taken to avoid repeated freeze thaw cycles. Antibodies should not be exposed to prolonged high temperatures.



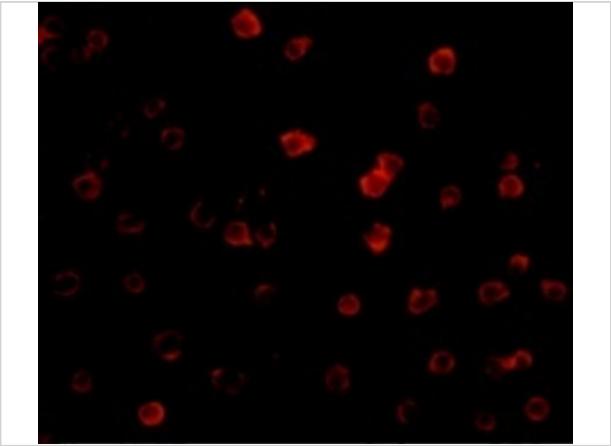
DR3 Antibody 1

Western blot analysis of DR3 in Jurkat total cell lysate with DR3 antibody at 1:1000 dilution.



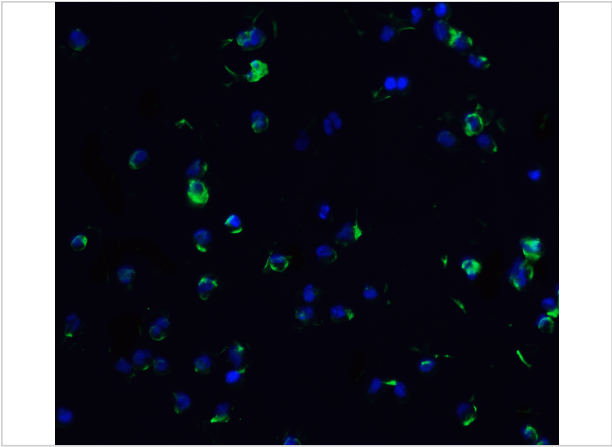
DR3 Antibody 2

Immunocytochemistry of DR3 in Jurkat cells with DR3 antibody at 10 µg/mL.



DR3 Antibody 3

Immunofluorescence of DR3 in Jurkat cells with DR3 antibody at 20 µg/mL.



DR3 Antibody 4

Immunofluorescence of DR3 in Jurkat cells with DR3 antibody at 20 µg/mL.

Green: DR3 Antibody (1158)  
Blue: DAPI staining

Disclaimer

Disclaimer	Optimal dilutions/concentrations should be determined by the end user. The information provided is a guideline for product use. This product is for research use only.
------------	--

For research use only. For additional information, visit ProSci's [Terms and Conditions Page](#).