

FLIP Antibody

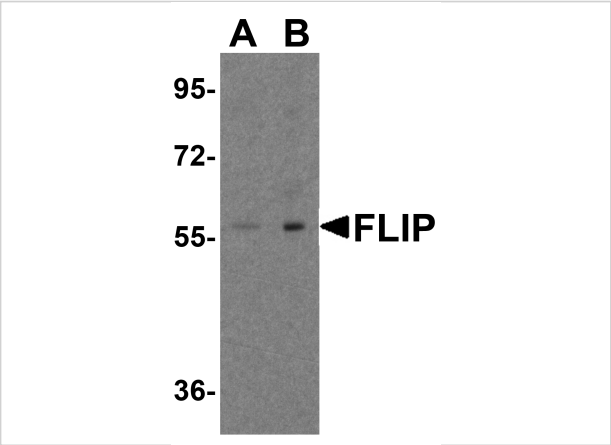
CATALOG NUMBER: 1156

Specifications

Host Species	Rabbit
Species Reactivity	Mouse
Homology	Predicted species reactivity based on immunogen sequence: Human: (77%)
Immunogen	FLIP antibody was raised against a 17 amino acid peptide near the carboxy terminus of mouse FLIP. The immunogen is located within the last 50 amino acids of FLIP.
Conjugate	Unconjugated
Tested Applications	ELISA, ICC, WB
User Note	Optimal dilutions for each application to be determined by the researcher.
Specificity	FLIP has short form (FLIPS) and long form (FLIPL) and antibody recognizes the FLIPL only.
Predicted Molecular Weight	Predicted: 53 kDa Observed: 58 kDa

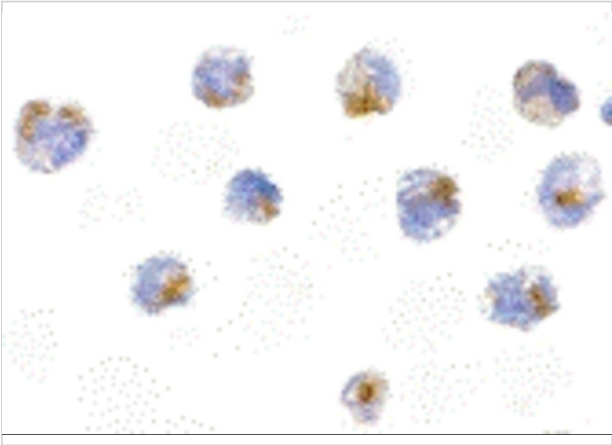
Properties

Purification	FLIP Antibody is Antibody is DEAE purified.
Clonality	Polyclonal
Isotype	IgG
Physical State	Liquid
Buffer	FLIP Antibody is supplied in PBS containing 0.02% sodium azide.
Concentration	1 mg/ml
Storage Conditions	FLIP antibody can be stored at 4°C for three months and -20°C, stable for up to one year. As with all antibodies care should be taken to avoid repeated freeze thaw cycles. Antibodies should not be exposed to prolonged high temperatures.



FLIP Antibody 1

Western blot analysis of FLIP in K562 cell lysate with FLIP antibody at (A) 1 and (B) 2 µg/ml.



FLIP Antibody 2

Immunocytochemistry of FLIP in 3T3 cells with FLIP antibody at 5 µg/mL.

Disclaimer

Disclaimer	Optimal dilutions/concentrations should be determined by the end user. The information provided is a guideline for product use. This product is for research use only.
------------	--

For research use only. For additional information, visit ProSci's [Terms and Conditions Page](#).