

DRAK1 Antibody

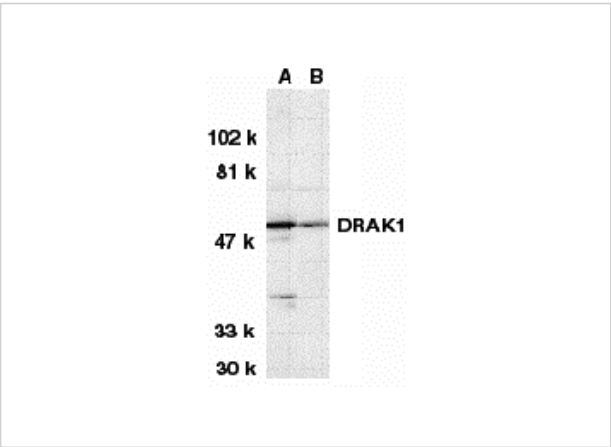
CATALOG NUMBER: 2147

Specifications

Host Species	Rabbit
Species Reactivity	Human
Homology	Predicted species reactivity based on immunogen sequence: Rabbit: (73%)
Immunogen	DRAK1 antibody was raised against a peptide corresponding to amino acids near the amino terminus of human DRAK1. The immunogen is located within the first 50 amino acids of DRAK1.
Conjugate	Unconjugated
Tested Applications	ELISA, ICC, IF, WB
User Note	Optimal dilutions for each application to be determined by the researcher.
Specificity	No cross responses to DRAK2, DAP or ZIP kinases.
Predicted Molecular Weight	50 kDa

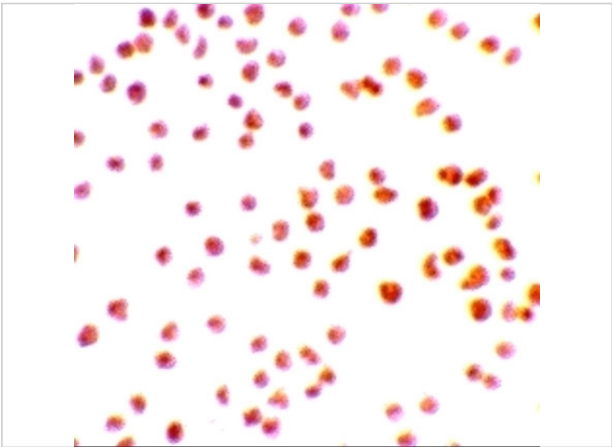
Properties

Purification	DRAK1 Antibody is affinity chromatography purified via peptide column.
Clonality	Polyclonal
Isotype	IgG
Physical State	Liquid
Buffer	DRAK1 Antibody is supplied in PBS containing 0.02% sodium azide.
Concentration	1 mg/ml
Storage Conditions	DRAK1 antibody can be stored at 4°C for three months and -20°C, stable for up to one year. As with all antibodies care should be taken to avoid repeated freeze thaw cycles. Antibodies should not be exposed to prolonged high temperatures.



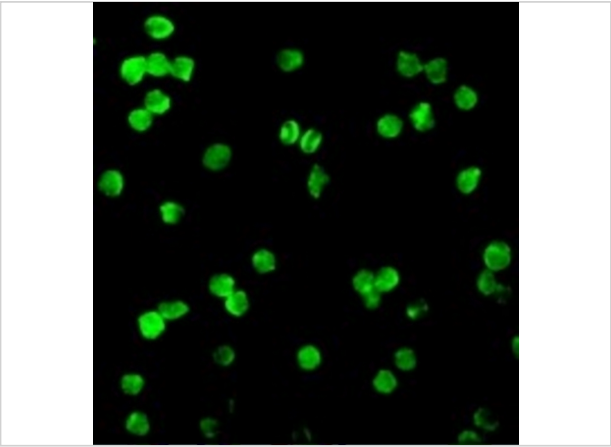
DRAK1 Antibody 1

Western blot analysis of DRAK1 in (A) MOLT4 and (B) A431 whole cell lysates with DRAK1 antibody at 1 µg/mL.



DRAK1 Antibody 2

Immunocytochemistry staining of MOLT4 cells using DRAK1 antibody at 2 µg/mL.



DRAK1 Antibody 3

Immunofluorescence of DRAK1 in Molt cells with DRAK1 antibody at 20 µg/mL.

Disclaimer

Disclaimer	Optimal dilutions/concentrations should be determined by the end user. The information provided is a guideline for product use. This product is for research use only.
------------	--

For research use only. For additional information, visit ProSci's [Terms and Conditions Page](#).