

TACE Antibody

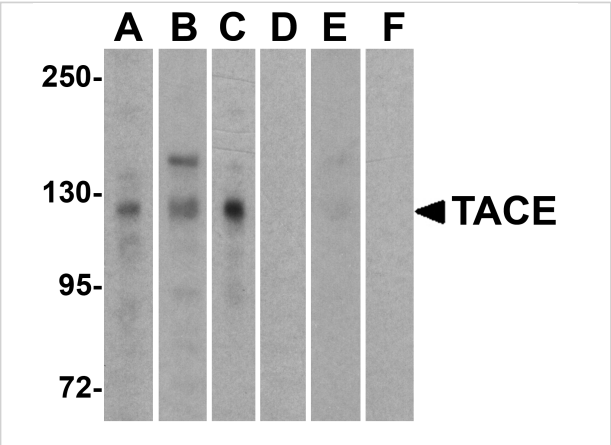
CATALOG NUMBER: 1131

Specifications

Host Species	Rabbit
Species Reactivity	Human, Rat
Homology	Predicted species reactivity based on immunogen sequence: mouse (94.1%)
Immunogen	Anti-TACE antibody (1131) was raised against a peptide corresponding to 17 amino acids near the carboxy terminus of human TACE. The immunogen is located within the last 50 amino acids of TACE.
Conjugate	Unconjugated
Tested Applications	ELISA, ICC, IF, WB
User Note	Optimal dilutions for each application to be determined by the researcher.
Specificity	80 to 130 kDa bands can be detected, which may represent mature protein, precursor, and glycosylated TACE.
Predicted Molecular Weight	Predicted: 93kD Observed: 93-125kD (Post-modification: 9 N-linked glycosylation)

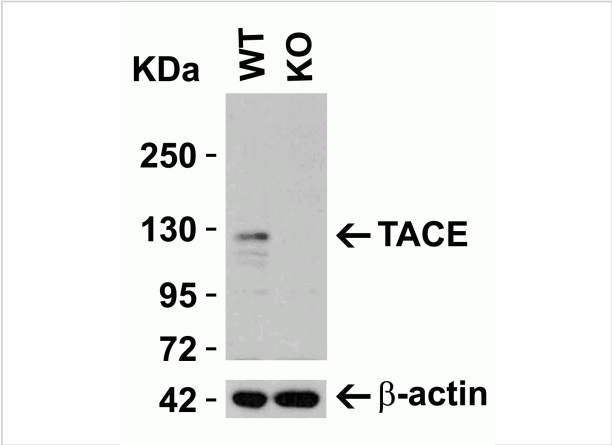
Properties

Purification	TACE Antibody is affinity chromatography purified via peptide column.
Clonality	Polyclonal
Isotype	IgG
Physical State	Liquid
Buffer	TACE Antibody is supplied in PBS containing 0.02% sodium azide.
Concentration	1 mg/mL
Storage Conditions	TACE antibody can be stored at 4°C for three months and -20°C, stable for up to one year. As with all antibodies care should be taken to avoid repeated freeze thaw cycles. Antibodies should not be exposed to prolonged high temperatures.



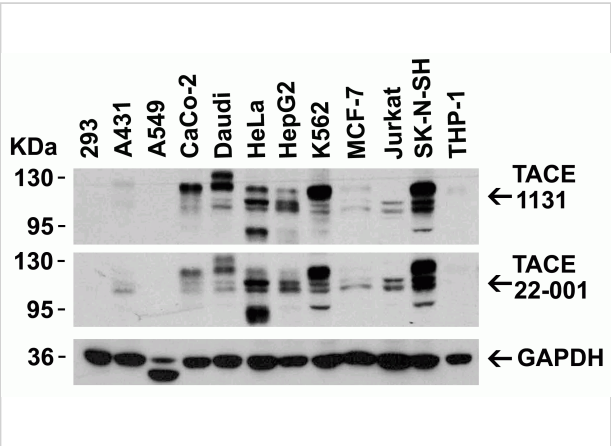
TACE Antibody 1

Figure 1 Western Blot Validation of TACE in Human Cell Lines
 Loading: 15 µg of lysates per lane. Antibodies: TACE (1 µg/mL), 1h incubation at RT in 5% NFDm/TBST. Secondary: Goa...



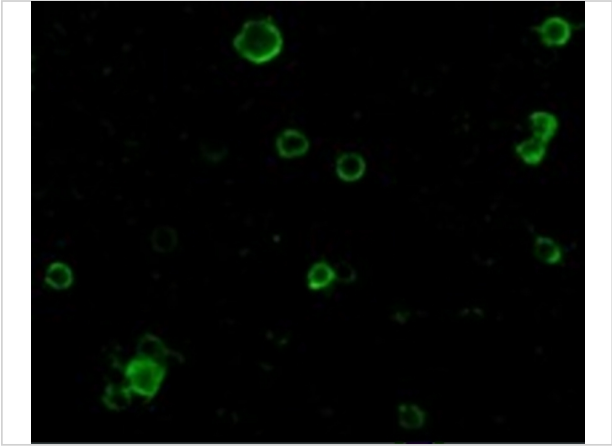
TACE Antibody 2

Figure 2 KO Validation in HeLa Cells
 Loading: 10 µg of HeLa WT cell lysates or TACE KO cell lysates. Antibodies: TACE 1131 (0.25 µg/mL) and beta-actin 3779 (1 µg/mL), 1 h inc...



TACE Antibody 3

Figure 3 Independent Antibody Validation (IAV) via Protein Expression Profile in Cell Lines
 Loading: 15 µg of lysates per lane. Antibodies: TACE 1131 (0.5 µg/mL), TACE 22-001 (...)



TACE Antibody 4

Figure 4 Immunofluorescence Validation of TACE in HeLa Cells
 Immunofluorescent analysis of 4% paraformaldehyde-fixed HeLa cells labeling TACE with 1131 at 10 µg/mL, followed by ...

Disclaimer

Disclaimer	Optimal dilutions/concentrations should be determined by the end user. The information provided is a guideline for product use. This product is for research use only.
------------	--

For research use only. For additional information, visit ProSci's [Terms and Conditions Page](#).