

Caspase-10 Antibody

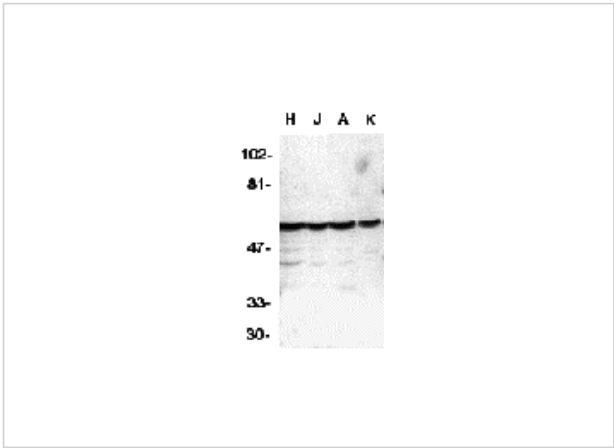
CATALOG NUMBER: 1128

Specifications

Host Species	Rabbit
Species Reactivity	Human
Immunogen	Caspase-10 antibody was raised against a 17 amino acid peptide near the carboxy terminus of human Caspase-10. The immunogen is located within amino acids 240 - 290 of Caspase-10.
Conjugate	Unconjugated
Tested Applications	ELISA, ICC, IF, WB
User Note	Optimal dilutions for each application to be determined by the researcher.
Specificity	Antibody only recognizes FLICE2 form of caspase-10.

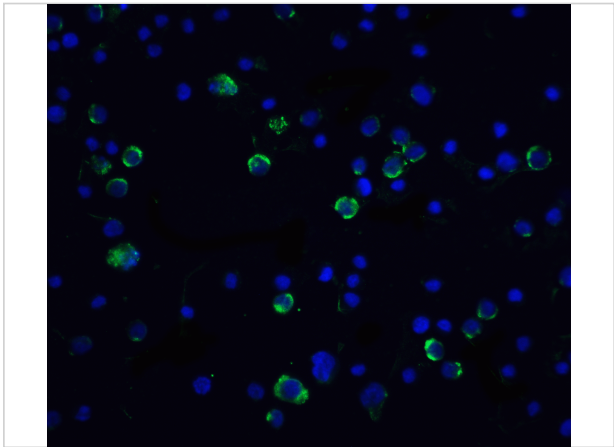
Properties

Purification	Caspase-10 Antibody is Antibody is DEAE purified.
Clonality	Polyclonal
Isotype	IgG
Physical State	Liquid
Buffer	Caspase-10 Antibody is supplied in PBS containing 0.02% sodium azide.
Concentration	1 mg/ml
Storage Conditions	Caspase-10 antibody can be stored at 4°C for three months and -20°C, stable for up to one year. As with all antibodies care should be taken to avoid repeated freeze thaw cycles. Antibodies should not be exposed to prolonged high temperatures.



Caspase-10 Antibody 1

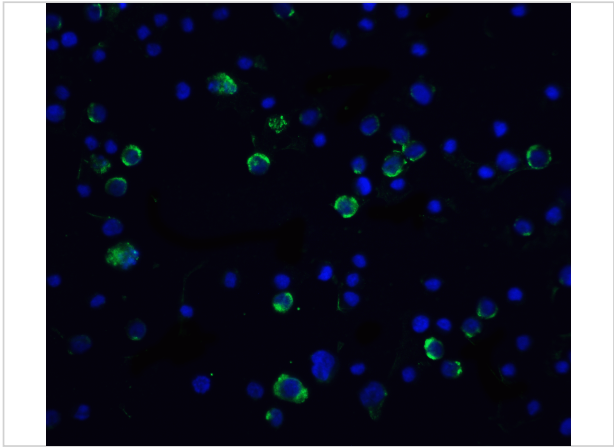
Western blot analysis of caspase-10 in HeLa (H), Jurkat (J), A431 (A), K562 (K) whole cell lysates with Caspase-10 antibody at 1 µg/mL.



Caspase-10 Antibody 2

Immunofluorescence of Casp10 in HeLa cells with Caspase 10 antibody at 20 µg/mL.

Green: Caspase-10 Antibody (1128)
Blue: DAPI staining



Caspase-10 Antibody 3

Immunocytochemistry of Casp10 in HeLa cells with Caspase 10 antibody at 5 µg/mL.

Disclaimer

Disclaimer

Optimal dilutions/concentrations should be determined by the end user. The information provided is a guideline for product use. This product is for research use only.

For research use only. For additional information, visit ProSci's [Terms and Conditions Page](#).