

RAIDD Antibody

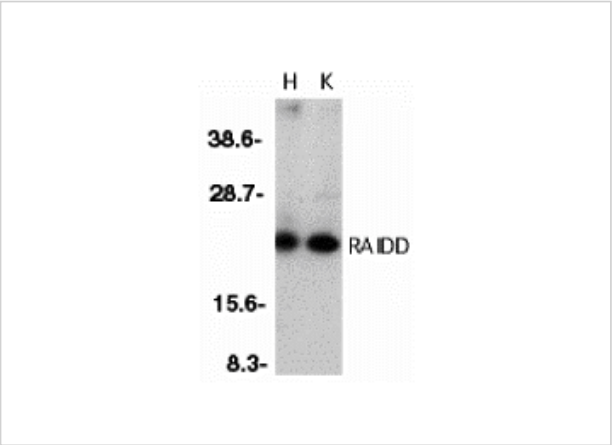
CATALOG NUMBER: 1115

Specifications

Host Species	Rabbit
Species Reactivity	Human
Homology	Predicted species reactivity based on immunogen sequence: Mouse: (78%)
Immunogen	RAIDD antibody was raised against a 19 amino acid peptide near the center of human RAIDD. The immunogen is located within amino acids 90 - 140 of RAIDD.
Conjugate	Unconjugated
Tested Applications	ELISA, ICC, IF, WB
User Note	Optimal dilutions for each application to be determined by the researcher.
Predicted Molecular Weight	22 kDa

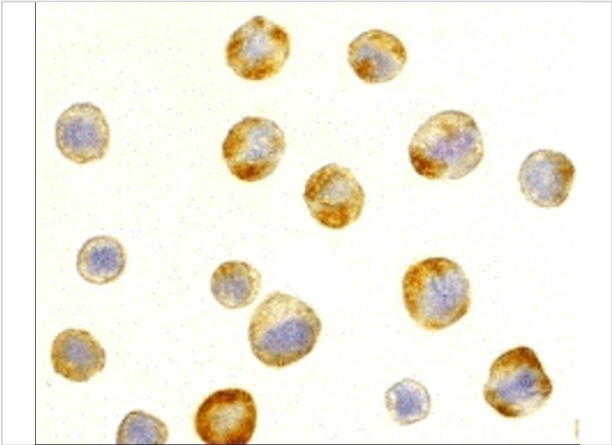
Properties

Purification	RAIDD Antibody is affinity chromatography purified via peptide column.
Clonality	Polyclonal
Isotype	IgG
Physical State	Liquid
Buffer	RAIDD Antibody is supplied in PBS containing 0.02% sodium azide.
Concentration	1 mg/ml
Storage Conditions	RAIDD antibody can be stored at 4°C for three months and -20°C, stable for up to one year. As with all antibodies care should be taken to avoid repeated freeze thaw cycles. Antibodies should not be exposed to prolonged high temperatures.



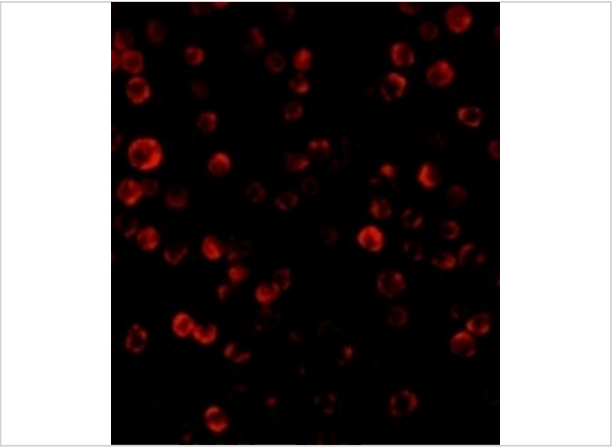
RAIDD Antibody 1

Western blot analysis of RAIDD in whole cell lysates from HeLa (H) or K562 (K) cells with RAIDD antibody at 1:500 dilution.



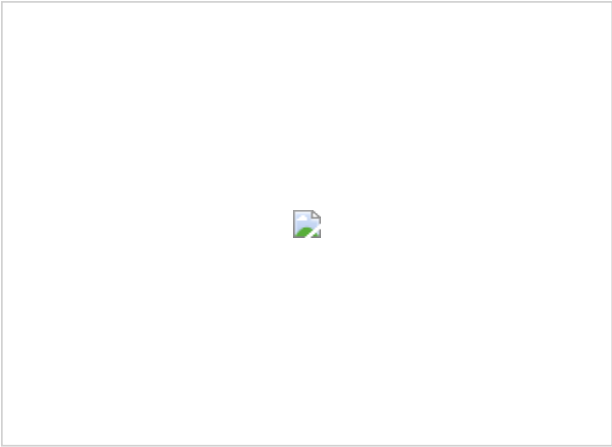
RAIDD Antibody 2

Immunocytochemistry of RAIDD in HeLa cells with RAIDD antibody at 5 µg/mL.



RAIDD Antibody 3

Immunofluorescence of RAIDD in HeLa cells with RAIDD antibody at 20 µg/mL.



RAIDD Antibody 4

Immunofluorescence of RAIDD in HeLa cells with RAIDD antibody at 20 µg/mL.

Disclaimer

Disclaimer	Optimal dilutions/concentrations should be determined by the end user. The information provided is a guideline for product use. This product is for research use only.
------------	--

For research use only. For additional information, visit ProSci's [Terms and Conditions Page](#).