

APP Antibody

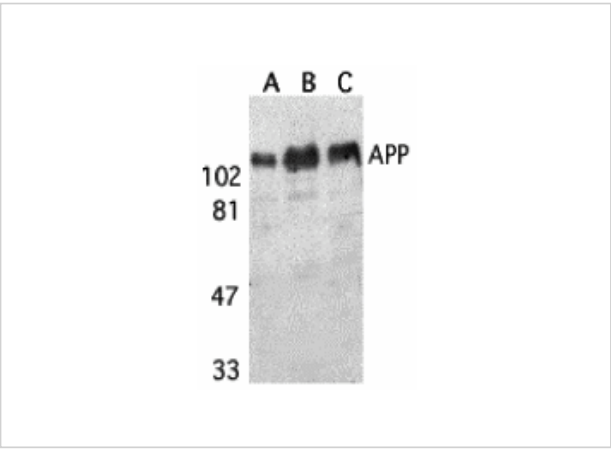
CATALOG NUMBER: 2133

Specifications

Host Species	Rabbit
Species Reactivity	Human, Mouse, Rat
Homology	Predicted species reactivity based on immunogen sequence: Bovine: (100%), Sheep: (100%), Rabbit: (100%), Guinea pig: (100%), Pig: (100%)
Immunogen	APP antibody was raised against a peptide corresponding to 10 amino acids of human amyloid A4 protein precursor (APP) corresponding to the amino terminus of the 4K Ab peptide generated by beta- and gamma-secretases. The immunogen is located within amino acids 650 - 700 of APP.
Conjugate	Unconjugated
Tested Applications	ELISA, IHC-P, WB
User Note	Optimal dilutions for each application to be determined by the researcher.
Predicted Molecular Weight	Predicted: 83 kDa Observed: 115 kDa

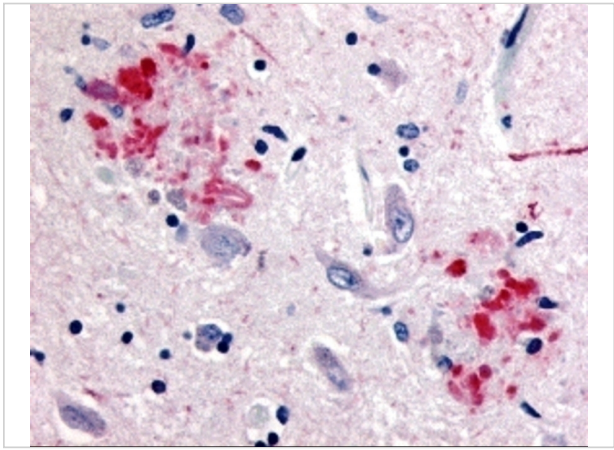
Properties

Purification	APP Antibody is affinity chromatography purified via peptide column.
Clonality	Polyclonal
Isotype	IgG
Physical State	Liquid
Buffer	APP Antibody is supplied in PBS containing 0.02% sodium azide.
Concentration	1 mg/mL
Storage Conditions	APP antibody can be stored at 4°C for three months and -20°C, stable for up to one year. As with all antibodies care should be taken to avoid repeated freeze thaw cycles. Antibodies should not be exposed to prolonged high temperatures.



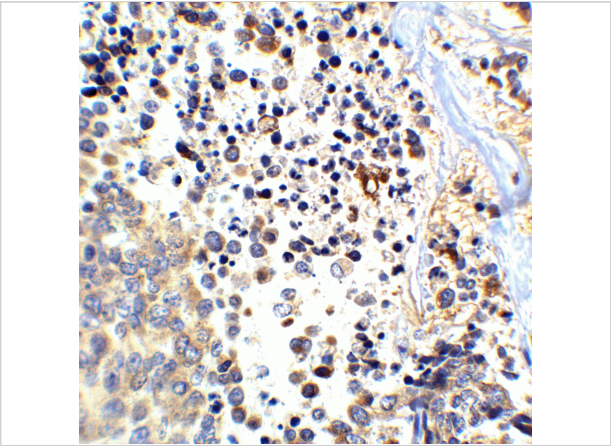
APP Antibody 1

Western blot analysis of APP in (A) human, (B) mouse, and (C) rat brain tissue lysates with APP antibody at 1 µg/mL.



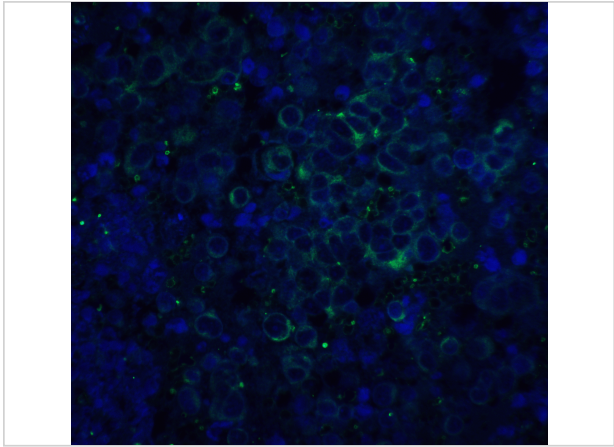
APP Antibody 2

Immunohistochemistry of APP in human brain (Alzheimer's disease) tissue with APP antibody at 10 µg/mL.



APP Antibody 3

Immunohistochemistry of APP in human brain tissue with APP antibody at 2.5 µg/mL.



APP Antibody 4

Immunofluorescence of APP in rat heart tissue with APP antibody at 20 µg/mL.

Green: APP Antibody (2133)
Blue: DAPI staining

Disclaimer

Disclaimer	Optimal dilutions/concentrations should be determined by the end user. The information provided is a guideline for product use. This product is for research use only.
------------	--

For research use only. For additional information, visit ProSci's [Terms and Conditions Page](#).