

## IL-1RAcP Antibody

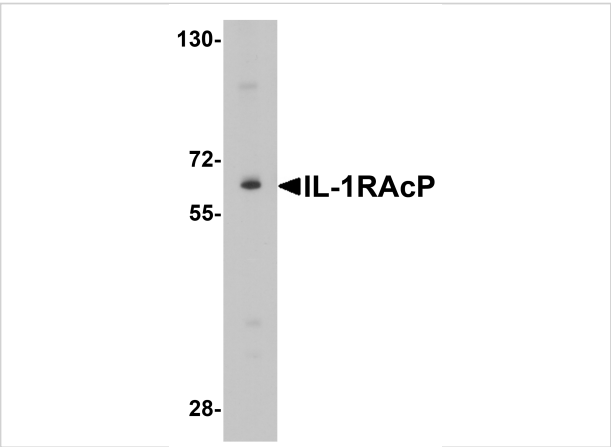
CATALOG NUMBER: 2131

### Specifications

Host Species	Rabbit
Species Reactivity	Human
Homology	Predicted species reactivity based on immunogen sequence: Rat: (91%), Mouse: (86%)
Immunogen	IL-1RAcP antibody was raised against a peptide corresponding to 22 amino acids near the carboxy terminus of human IL-1RAcP. The immunogen is located within the last 50 amino acids of IL-1RAcP.
Conjugate	Unconjugated
Tested Applications	ELISA, ICC, WB
User Note	Optimal dilutions for each application to be determined by the researcher.
Specificity	It has no cross activity to other member in the IL-1 receptor family.
Predicted Molecular Weight	Predicted: 63 kDa Observed: 63 kDa

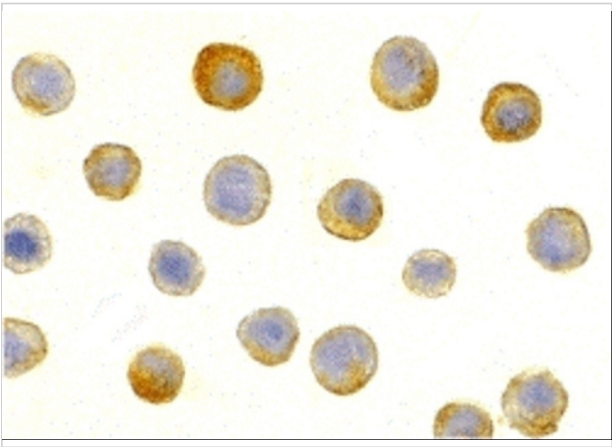
### Properties

Purification	IL-1RAcP Antibody is affinity chromatography purified via peptide column.
Clonality	Polyclonal
Isotype	IgG
Physical State	Liquid
Buffer	IL-1RAcP Antibody is supplied in PBS containing 0.02% sodium azide.
Concentration	1 mg/mL
Storage Conditions	IL-1RAcP antibody can be stored at 4°C for three months and -20°C, stable for up to one year. As with all antibodies care should be taken to avoid repeated freeze thaw cycles. Antibodies should not be exposed to prolonged high temperatures.



IL-1RAcP Antibody 1

Western blot analysis of IL-1RAcP expression in K562 cell lysate with IL-1RAcP antibody at 1 µg/ml.



IL-1RAcP Antibody 2

Immunocytochemistry of IL-1RAcP in HeLa cells with IL-1RAcP antibody at 5 µg/mL.

Disclaimer

Disclaimer	Optimal dilutions/concentrations should be determined by the end user. The information provided is a guideline for product use. This product is for research use only.
------------	--

For research use only. For additional information, visit ProSci's [Terms and Conditions Page](#).