

DFF40 Antibody

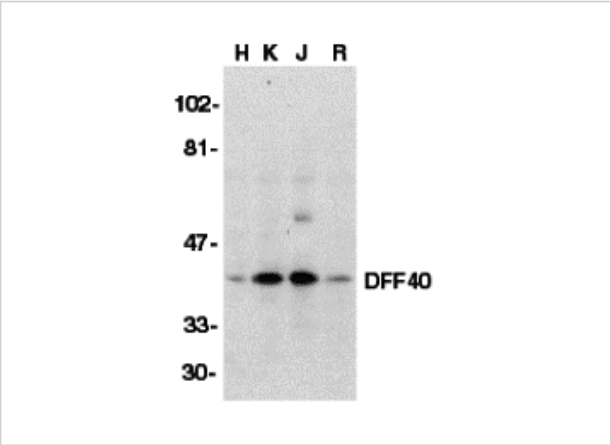
CATALOG NUMBER: 2107

Specifications

Host Species	Rabbit
Species Reactivity	Human, Mouse, Rat
Homology	Predicted species reactivity based on immunogen sequence: Bovine: (94%)
Immunogen	DFF40 antibody was raised against a peptide corresponding to 18 amino acids near the center of murine CAD. The immunogen is located within amino acids 130 - 180 of DFF40.
Conjugate	Unconjugated
Tested Applications	ELISA, ICC, IF, WB
User Note	Optimal dilutions for each application to be determined by the researcher.
Predicted Molecular Weight	Predicted: 38 kDa Observed: 40 kDa

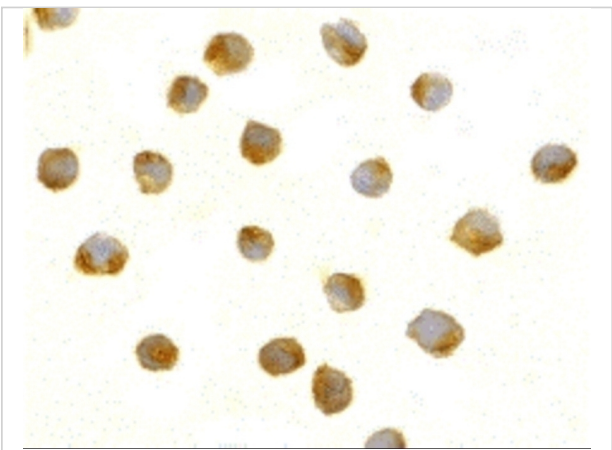
Properties

Purification	DFF40 Antibody is affinity chromatography purified via peptide column.
Clonality	Polyclonal
Isotype	IgG
Physical State	Liquid
Buffer	DFF40 Antibody is supplied in PBS containing 0.02% sodium azide.
Concentration	1 mg/mL
Storage Conditions	DFF40 antibody can be stored at 4°C for three months and -20°C, stable for up to one year. As with all antibodies care should be taken to avoid repeated freeze thaw cycles. Antibodies should not be exposed to prolonged high temperatures.



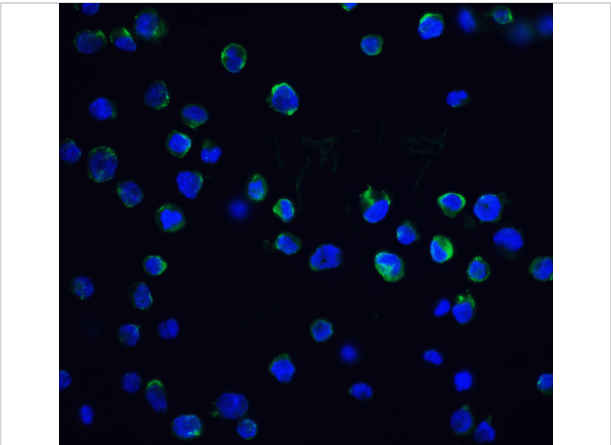
DFF40 Antibody 1

Western blot analysis of DFF40 in HeLa (H), K562 (K), Jurkat (J), and Raji (R) whole cell lysate with DFF40 antibody (I18) at 1:500 dilution.



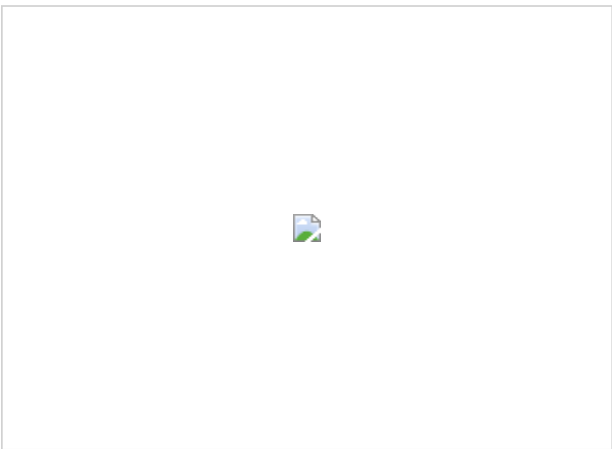
DFF40 Antibody 2

Immunocytochemistry of DFF40 in Jurkat cells with DFF40 antibody at 5 µg/mL.



DFF40 Antibody 3

Immunofluorescence of DFF40 in K562 cells with DFF40 antibody at 20 µg/mL.



DFF40 Antibody 4

Immunofluorescence of DFF40 in K562 cells with DFF40 antibody at 20 µg/mL.

Green: DFF40 Antibody (2107)
Blue: DAPI staining

Disclaimer

Disclaimer	Optimal dilutions/concentrations should be determined by the end user. The information provided is a guideline for product use. This product is for research use only.
------------	--

For research use only. For additional information, visit ProSci's [Terms and Conditions Page](#).