

NCOA4 (IN) Antibody

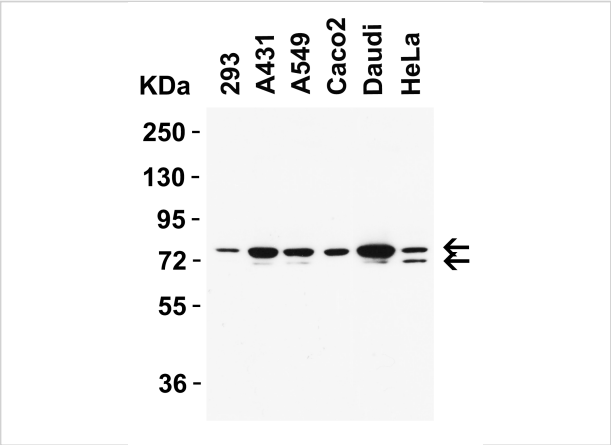
CATALOG NUMBER: 9663

Specifications

Host Species	Rabbit
Species Reactivity	Human, Mouse, Rat
Homology	Predicted species reactivity based on immunogen sequence: monkey (100%), gorilla (100%), dog (100%), horse (100%)
Immunogen	Anti-NCOA4 antibody (9663) was raised against a peptide corresponding to 13 amino acids near the center of human NCOA4. The immunogen is located within 420-470 amino acids of NCOA4.
Conjugate	Unconjugated
Tested Applications	ELISA, IF, IHC, WB
User Note	Optimal dilutions for each application to be determined by the researcher.
Predicted Molecular Weight	Predicted: 70-74 kD Observed: 70-74 kD

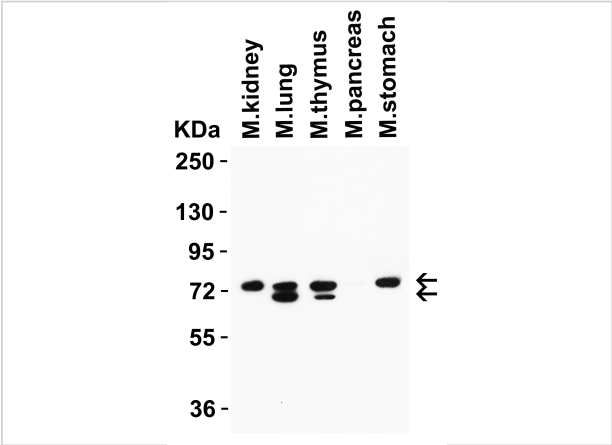
Properties

Purification	NCOA4 Antibody is affinity chromatography purified via peptide column.
Clonality	Polyclonal
Isotype	IgG
Physical State	Liquid
Buffer	NCOA4 Antibody is supplied in PBS containing 0.02% sodium azide.
Concentration	1 mg/mL
Storage Conditions	NCOA4 antibody can be stored at 4°C for three months and -20°C, stable for up to one year. As with all antibodies care should be taken to avoid repeated freeze thaw cycles. Antibodies should not be exposed to prolonged high temperatures.



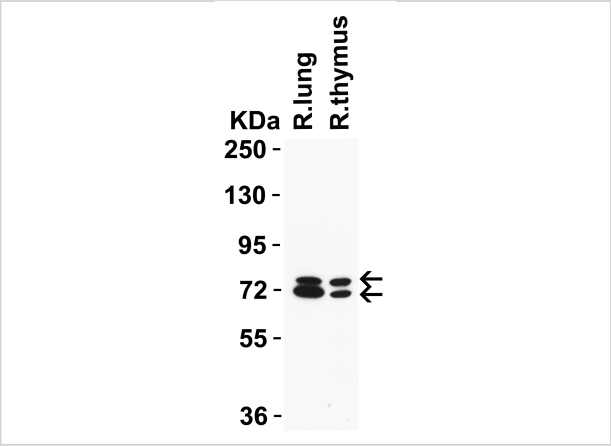
NCOA4 (IN) Antibody 1

Figure 1: Western Blot Validation in Human Cell Lines
 Loading: 15 µg of lysates per lane. Antibodies: NCOA4 9663, 0.5 µg/mL, 1h incubation at RT in 5% NFDM/TBST. Secondary: Go...



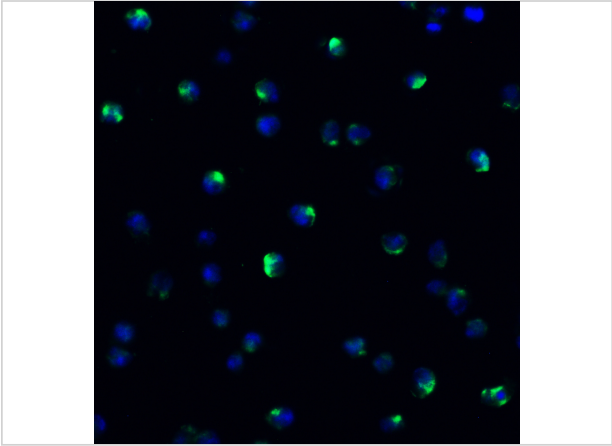
NCOA4 (IN) Antibody 2

Figure 2: Western Blot Validation in Mouse Tissues
 Loading: 15 µg of lysates per lane. Antibodies: NCOA4 9663, 1 µg/mL, 1h incubation at RT in 5% NFDM/TBST. Secondary: Goat a...



NCOA4 (IN) Antibody 3

Figure 3: Western Blot Validation in Rat Tissues
 Loading: 15 µg of lysates per lane. Antibodies: NCOA4 9663, 1 µg/mL, 1h incubation at RT in 5% NFDM/TBST. Secondary: Goat anti-...



NCOA4 (IN) Antibody 4

Figure 4: Immunofluorescence Validation of NCOA4 in Daudi Cells
 Immunofluorescent analysis of 4% paraformaldehyde-fixed Daudi cells labeling NCOA4 with 9663 at 20 µg/mL, followe...

Disclaimer

Disclaimer	Optimal dilutions/concentrations should be determined by the end user. The information provided is a guideline for product use. This product is for research use only.
------------	--

For research use only. For additional information, visit ProSci's [Terms and Conditions Page](#).