

AIFM2 (CT) Antibody

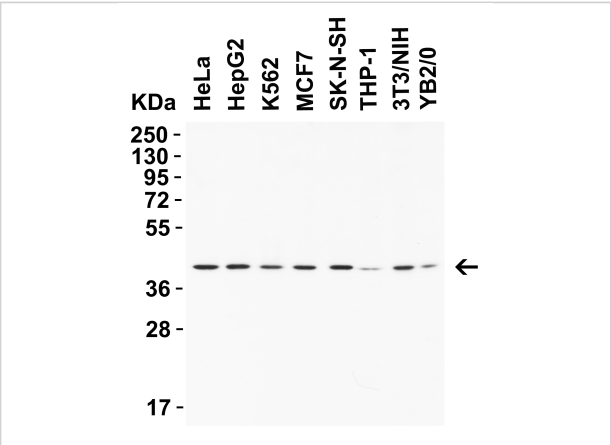
CATALOG NUMBER: 9653

Specifications

Host Species	Rabbit
Species Reactivity	Human, Mouse, Rat
Homology	Predicted species reactivity based on immunogen sequence: Gorilla (100%); chimpanzee (100%), cow (92%), Horse (92%)
Immunogen	Anti-AIFM2 antibody (9653) was raised against a peptide corresponding to 12 amino acids near the carboxyl terminus of human AIFM2. The immunogen is located within the last 50 amino acids of AIFM2.
Conjugate	Unconjugated
Tested Applications	ELISA, IHC, WB
User Note	Optimal dilutions for each application to be determined by the researcher.
Predicted Molecular Weight	Predicted: 41kD Observed: 41 kD

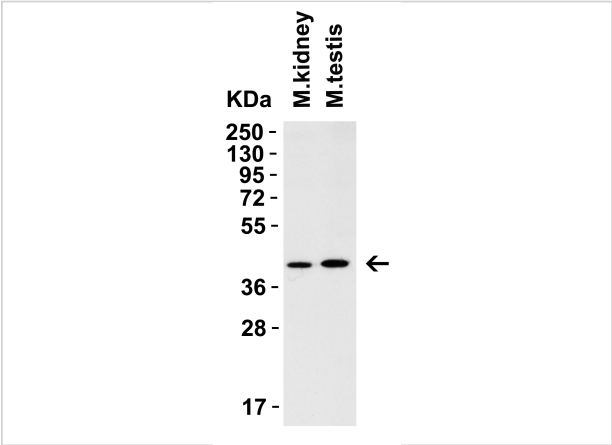
Properties

Purification	AIFM2 Antibody is affinity chromatography purified via peptide column.
Clonality	Polyclonal
Isotype	IgG
Physical State	Liquid
Buffer	AIFM2 Antibody is supplied in PBS containing 0.02% sodium azide.
Concentration	1 mg/mL
Storage Conditions	AIFM2 antibody can be stored at 4°C for three months and -20°C, stable for up to one year. As with all antibodies care should be taken to avoid repeated freeze thaw cycles. Antibodies should not be exposed to prolonged high temperatures.



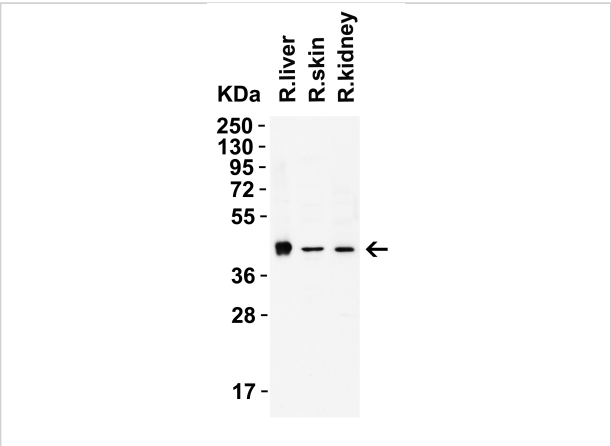
AIFM2 (CT) Antibody 1

Figure 1: WB Validation in Human Mouse and Rat Cell Lines
 Loading: 15 µg of lysate. Antibodies: AIFM2 9653, 2 µg/mL, 1h incubation at RT in 5% NFDM/TBST. Secondary: Goat An...



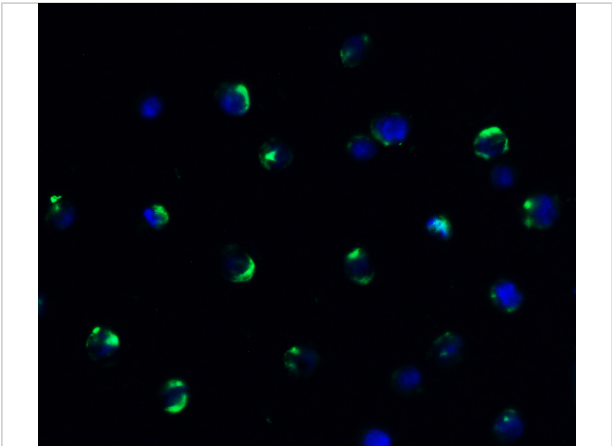
AIFM2 (CT) Antibody 2

Figure 2: WB Validation in Mouse Tissues
 Loading: 15 µg of lysate. Antibodies: AIFM2 9653, 2 µg/mL, 1h incubation at RT in 5% NFDM/TBST. Secondary: Goat Anti-Rabbit IgG HR...



AIFM2 (CT) Antibody 3

Figure 3: WB Validation in Rat Tissues
 Loading: 15 µg of lysate. Antibodies: AIFM2 9653, 2 µg/mL, 1h incubation at RT in 5% NFDM/TBST. Secondary: Goat Anti-Rabbit IgG HRP c...



AIFM2 (CT) Antibody 4

Figure 4: Immunofluorescence Validation of AIFM2 in HeLa Cells
 Immunofluorescent analysis of 4% paraformaldehyde-fixed HeLa cells labeling AIFM2 with 9653 at 20 µg/mL, followed ...

Disclaimer

Disclaimer	Optimal dilutions/concentrations should be determined by the end user. The information provided is a guideline for product use. This product is for research use only.
------------	--

For research use only. For additional information, visit ProSci's [Terms and Conditions Page](#).