

IFI16 (CT) Antibody

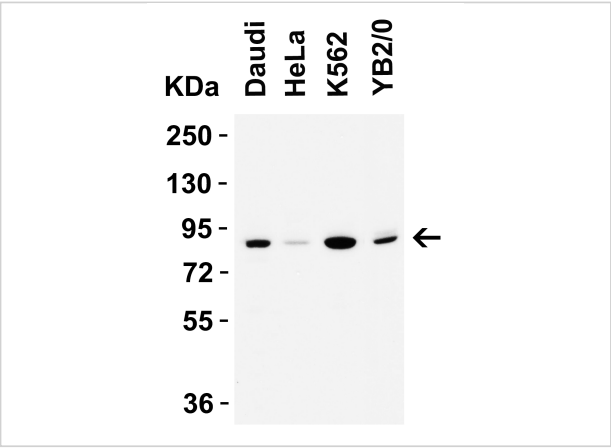
CATALOG NUMBER: 9641

Specifications

Host Species	Rabbit
Species Reactivity	Human, Mouse, Rat
Homology	Predicted species reactivity based on immunogen sequence: Gorilla (100%), chimpanzee (100%)
Immunogen	Anti-IFI16 antibody (9641) was raised against a peptide corresponding to 16 amino acids near the carboxyl terminus of human IFI16. The immunogen is located within the last 50 amino acids of IFI16.
Conjugate	Unconjugated
Tested Applications	ELISA, IF, IHC, WB
User Note	Optimal dilutions for each application to be determined by the researcher.
Predicted Molecular Weight	Predicted: 88kD Observed: 88 kD

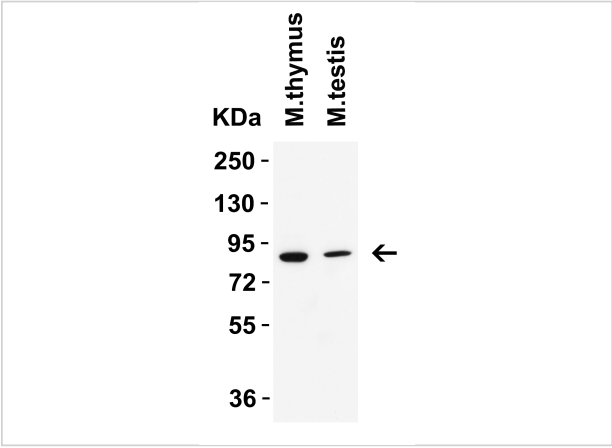
Properties

Purification	IFI16 Antibody is affinity chromatography purified via peptide column.
Clonality	Polyclonal
Isotype	IgG
Physical State	Liquid
Buffer	IFI16 Antibody is supplied in PBS containing 0.02% sodium azide.
Concentration	1 mg/mL
Storage Conditions	IFI16 antibody can be stored at 4°C up to one year. Antibodies should not be exposed to prolonged high temperatures.



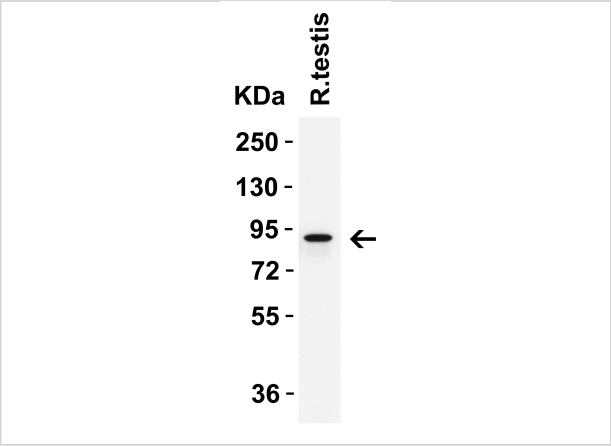
IFI16 (CT) Antibody 1

Figure 1 WB Validation in Human and Rat Cell Lines
 Loading: 15 µg of lysate per lane. Antibodies: IFI16 9641, 2 µg/mL, 1 h incubation at RT in 5% NFDM/TBST. Secondary: Goat anti-ra...



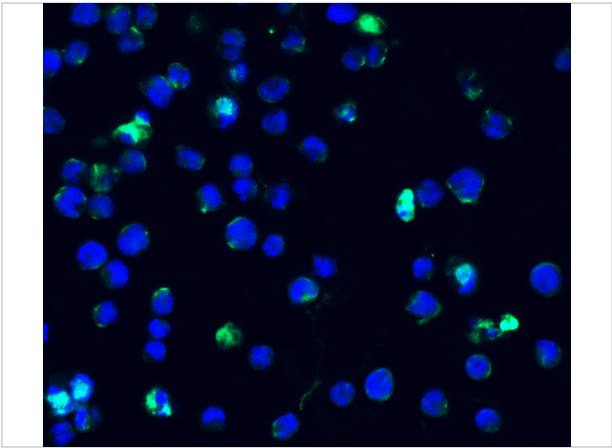
IFI16 (CT) Antibody 2

Figure 2 Western Blot Validation in Mouse Tissues
 Loading: 15 µg of lysates per lane. Antibodies: IFI16 9641, 2 µg/mL, 1 h incubation at RT in 5% NFDM/TBST. Secondary: Goat an...



IFI16 (CT) Antibody 3

Figure 3 Western Blot Validation in Rat Testis
 Loading: 15 µg of lysate per lane. Antibodies: IFI16 9641, 2 µg/mL, 1 h incubation at RT in 5% NFDM/TBST. Secondary: Goat anti-ra...



IFI16 (CT) Antibody 4

Figure 4 Immunofluorescence Validation of IFI16 in Human Molt4 Cells
 Immunofluorescent analysis of 4% paraformaldehyde-fixed Molt4 cells labeling IFI16 with 9641 at 20 µg/mL, fo...

Disclaimer

Disclaimer	Optimal dilutions/concentrations should be determined by the end user. The information provided is a guideline for product use. This product is for research use only.
------------	--

For research use only. For additional information, visit ProSci's [Terms and Conditions Page](#).